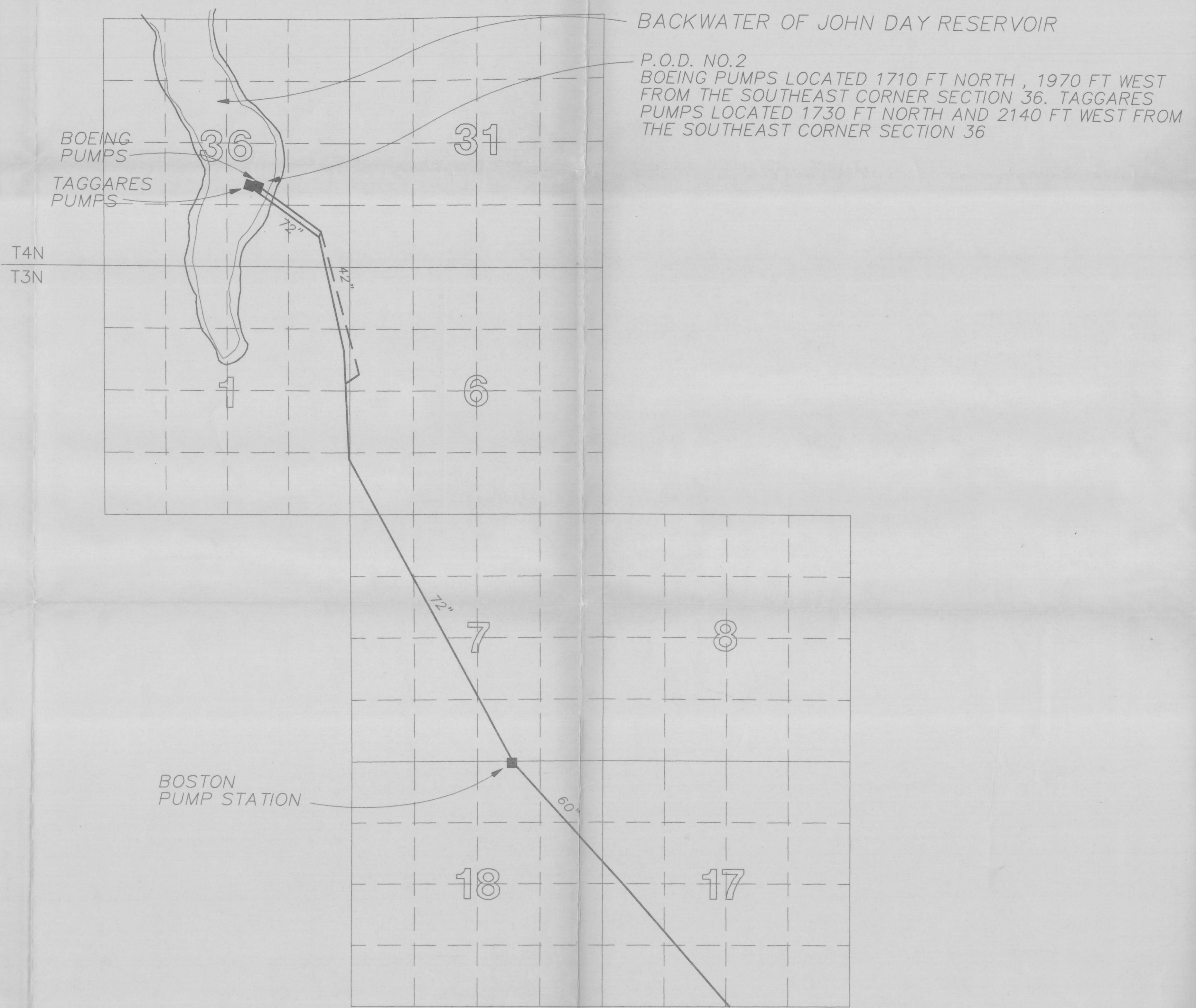
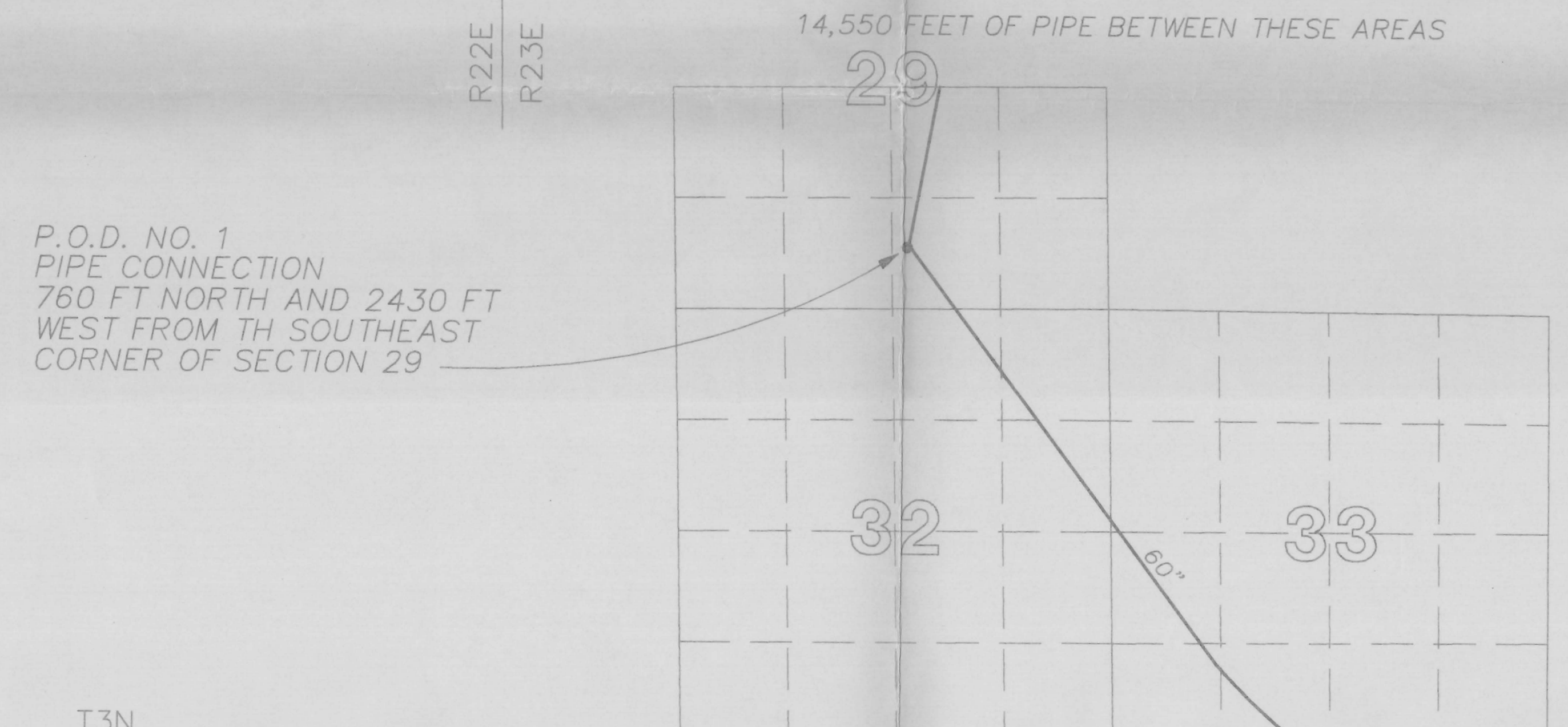


SCALE: 1" = 1320'



LOCATION OF PIVOT PADS (CENTER OF CIRCLES)

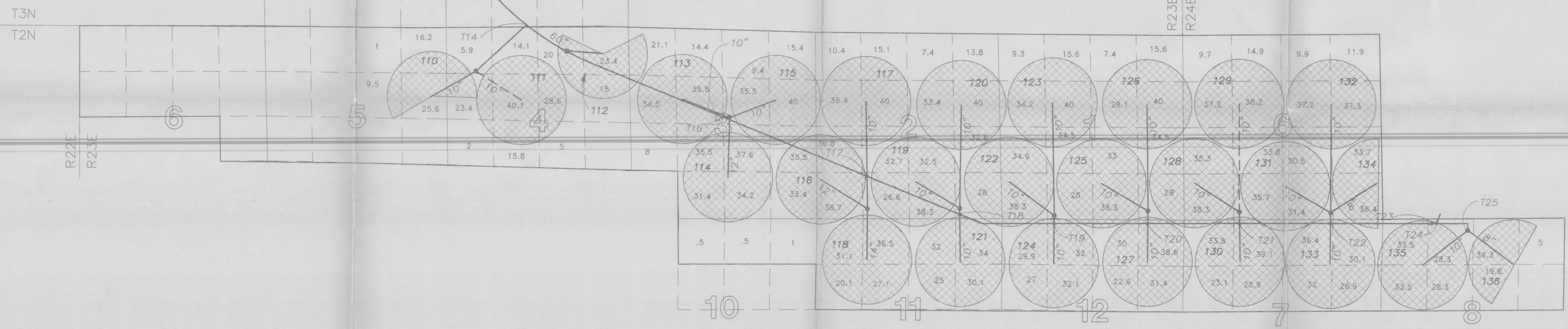
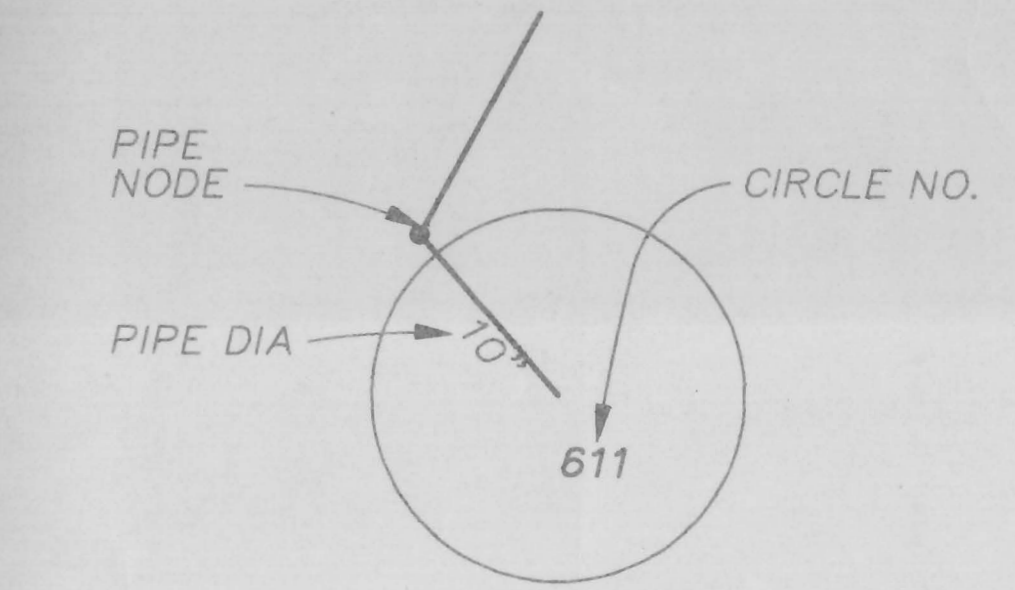
PIVOT #	TOWNSHIP	RANGE	DESCRIPTION
110	T2N	R23E	400 FT WEST, 1900 FT SOUTH FROM NE CORNER OF SECTION 8
111	T2N	R23E	2100 FT EAST, 2000 FT SOUTH FROM NW CORNER OF SECTION 4
112	T2N	R23E	760 FT WEST, 700 FT SOUTH FROM NE CORNER OF SECTION 4
113	T2N	R23E	1580 FT EAST, 2000 FT SOUTH FROM NW CORNER OF SECTION 3
114	T2N	R23E	2550 FT WEST, 1200 FT NORTH FROM SE CORNER OF SECTION 3
115	T2N	R23E	1150 FT WEST, 1950 FT SOUTH FROM NE CORNER OF SECTION 3
116	T2N	R23E	110 FT EAST, 1130 FT NORTH FROM SW CORNER OF SECTION 2
117	T2N	R23E	1440 FT EAST, 610 FT SOUTH FROM NW CORNER OF SECTION 2
118	T2N	R23E	1450 FT EAST, 1180 FT SOUTH FROM NW CORNER OF SECTION 11
119	T2N	R23E	2440 FT WEST, 1050 FT NORTH FROM SE CORNER OF SECTION 2
120	T2N	R23E	1090 FT WEST, 2040 FT SOUTH FROM NE CORNER OF SECTION 2
121	T2N	R23E	1190 FT WEST, 1200 FT SOUTH FROM NE CORNER OF SECTION 11
122	T2N	R23E	220 FT EAST, 1070 FT NORTH FROM SW CORNER OF SECTION 1
123	T2N	R23E	1530 FT EAST, 1970 FT SOUTH FROM NW CORNER OF SECTION 1
124	T2N	R23E	1490 FT EAST, 1370 FT SOUTH FROM NW CORNER OF SECTION 12
125	T2N	R23E	2340 FT WEST, 1810 FT SOUTH FROM SE CORNER OF SECTION 1
126	T2N	R23E	1000 FT WEST, 1970 FT SOUTH FROM NE CORNER OF SECTION 1
127	T2N	R23E	1010 FT WEST, 1190 FT SOUTH FROM NE CORNER OF SECTION 12
128	T2N	R24E	320 FT EAST, 1060 FT NORTH FROM SW CORNER OF SECTION 8
129	T2N	R24E	1520 FT EAST, 1970 FT SOUTH FROM NW CORNER OF SECTION 6
130	T2N	R24E	1630 FT EAST, 1200 FT SOUTH FROM SE CORNER OF SECTION 6
131	T2N	R24E	2680 FT WEST, 940 FT NORTH FROM NE CORNER OF SECTION 7
132	T2N	R24E	1410 FT WEST, 2010 FT SOUTH FROM NE CORNER OF SECTION 6
133	T2N	R24E	1490 FT WEST, 1310 FT SOUTH FROM NE CORNER OF SECTION 7
134	T2N	R24E	150 FT WEST, 1040 FT NORTH FROM SE CORNER OF SECTION 6
135	T2N	R24E	1170 FT EAST, 1320 FT SOUTH FROM NW CORNER OF SECTION 8
136	T2N	R24E	1490 FT WEST, 1320 FT SOUTH FROM NE CORNER OF SECTION 8



LEGEND

- PLACE OF USE DESCRIBED IN PERMIT 40920
- IRRIGATED AREAS
- COAL TAR LINED PIPE, STEEL PIPE, PVC PIPE
- SECTION NUMBER
- NUMBER OF ACRES IRRIGATED IN THE 1/4 SECTION
- PUMP STATION LOCATION

ALL LOCATIONS ARE REFERENCED FROM THE WILLAMETTE MERIDIAN



RECEIVED
JAN 14 1994
WATER RESOURCES DEPT
SALEM, OREGON

DESIGNER: M.F. MADISON
 DRAWN BY: S.R. BAILEY
 CHECKED BY: D. COLLINS
 APPROVED BY: M.F. MADISON

FINAL PROOF SURVEY
APPLICATION: 54099 PERMIT: 40920

THE PURPOSE OF THIS MAP IS TO IDENTIFY THE LOCATION OF THE WATER RIGHT. IT IS NOT INTENDED TO PROVIDE INFORMATION RELATIVE TO THE LOCATION OF PROPERTY OWNERSHIP BOUNDARY LINES.

VERIFY SCALES
BAR IS ONE INCH ON ORIGINAL DRAWING.
IF NOT ONE INCH ON THIS SHEET, ADJUST SCALES ACCORDINGLY.

BOEING AGRI-INDUSTRIAL COMPANY
PO BOX 139
BOARDMAN, OREGON

SHEET 1
DWG NO.
DATE DEC 1993
PROJ NO. PDX36494.A0