

RECEIVED

SEP 17 1999

IN 1 2

1/4 NE 1/4 SECTION 27 T1N R1W W.M.

WASHINGTON COUNTY OREGON

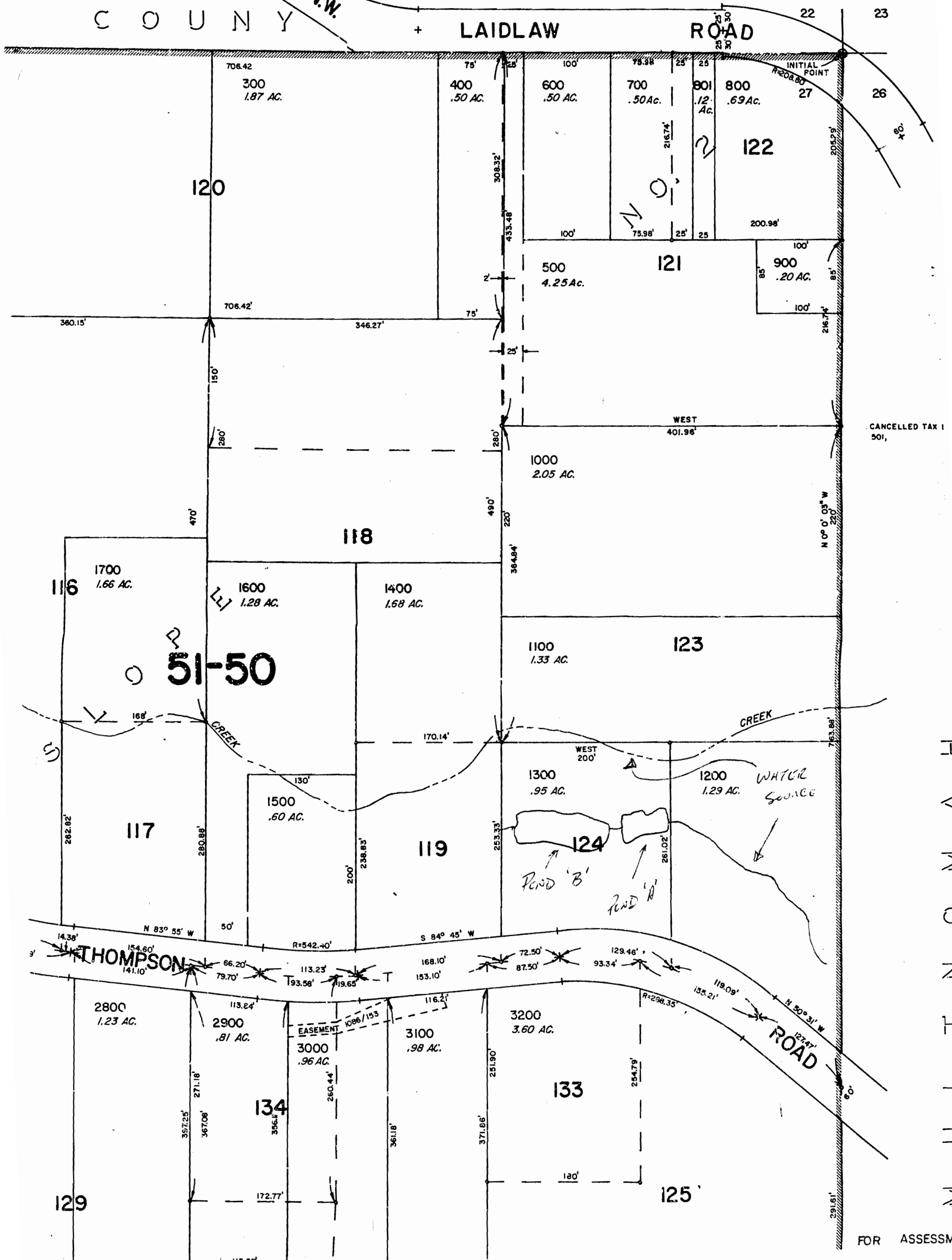
SCALE 1"=100'

WATER RESOURCES DEPT.
SALEM, OREGON

C O U N T Y

L A I D L A W

R O A D



FOR ASSESSM