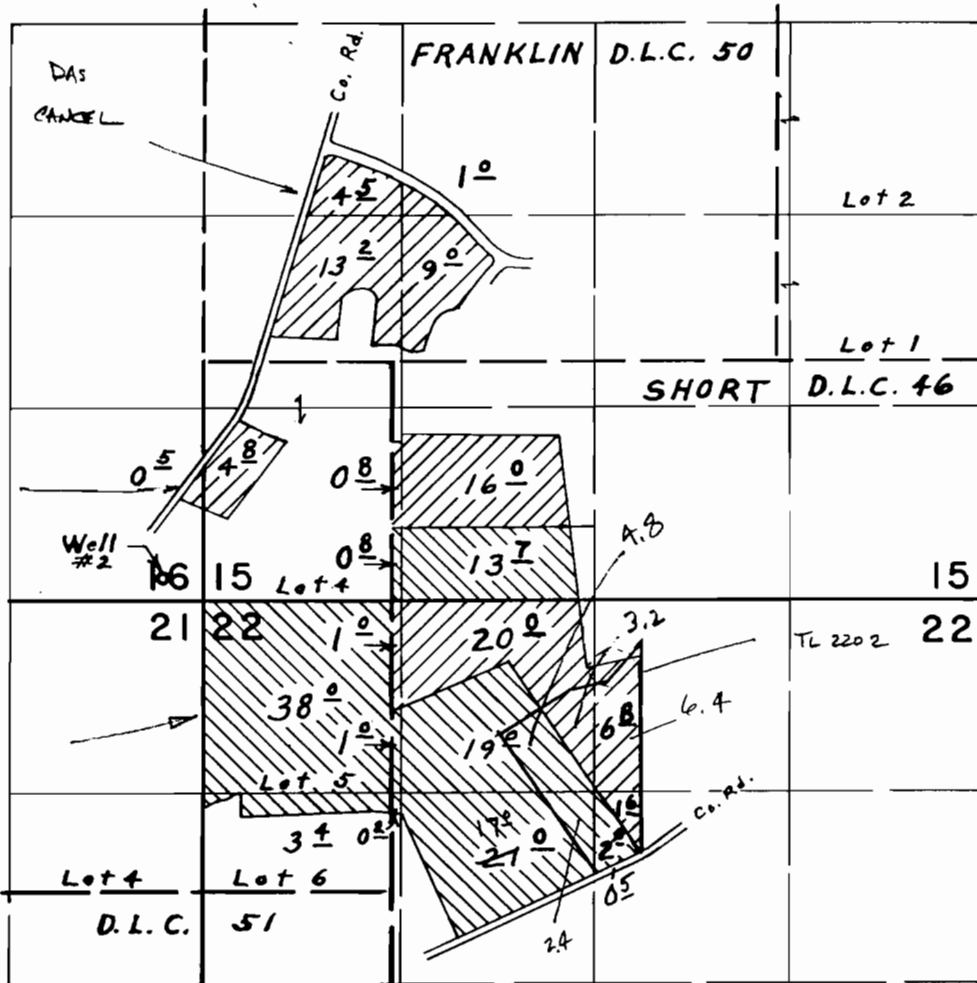


T. 3 S. R. 1 W. W. M.



Living Enrichment Center - *unfilled*

DSL WILSONVILLE TRACT

School District
TL 2202

Primary
NWNE 6.8
SWNE 1.6
NENW 3.2
Supp
SW NE 1.6
NENW 4.8
SW NW 2.4

Well #2 located 160' N. & 280' W. from S.E. Corner Section 16

Primary 
Supplemental 

FINAL PROOF SURVEY UNDER

Application No. G-1999 Permit No. G-1837
IN NAME OF

OREGON STATE BOARD OF CONTROL

Surveyed Oct. 1, 1975, by L. E. Gould