

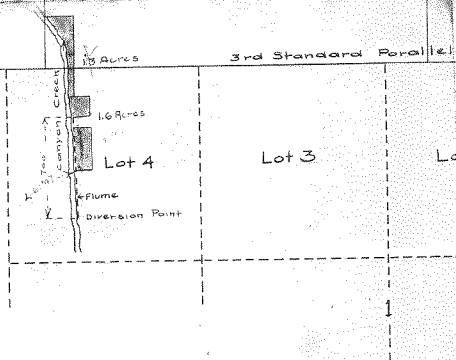


35

sw. cor. sec 35

Humboldt Div.

3rd Standard Parallel

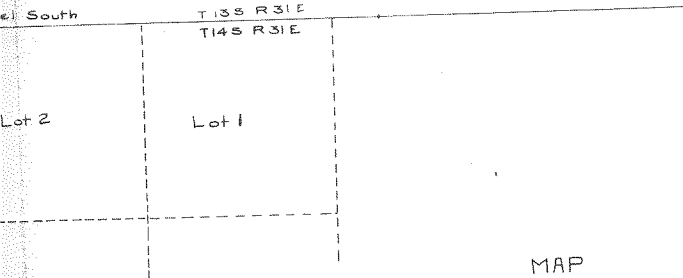


Note: Distance from SW corner Sec 35 to point of diversion was obtained by triangulation, bearing being determined by polar observation. Location of lot lines are only approximate.

Application No. 1306  
Permit No. 628

Certificate of Surveyor  
We, J W Balch & A B Ordway, of Canyon  
Grant County Oregon do hereby certify that  
this map was made from notes taken during  
an actual survey made by us on Mar. 15  
and that it correctly represents the work  
described in the accompanying application  
together with the location of streams &  
other ditches in the immediate vicinity  
and has written thereon the area in each  
smallest legal subdivision which it is  
proposed to irrigate.

J. W. Balch  
A. B. Ordway  
Surveyors



MAP  
OF  
CITY HOME IRRIGATION CO'S FLUME  
CANYON CITY, ORE. BALCH & ORDWAY, ENGRS.  
MAR. 20 - 1911  
Scale 1" = 10 chains

8" = 1 mile