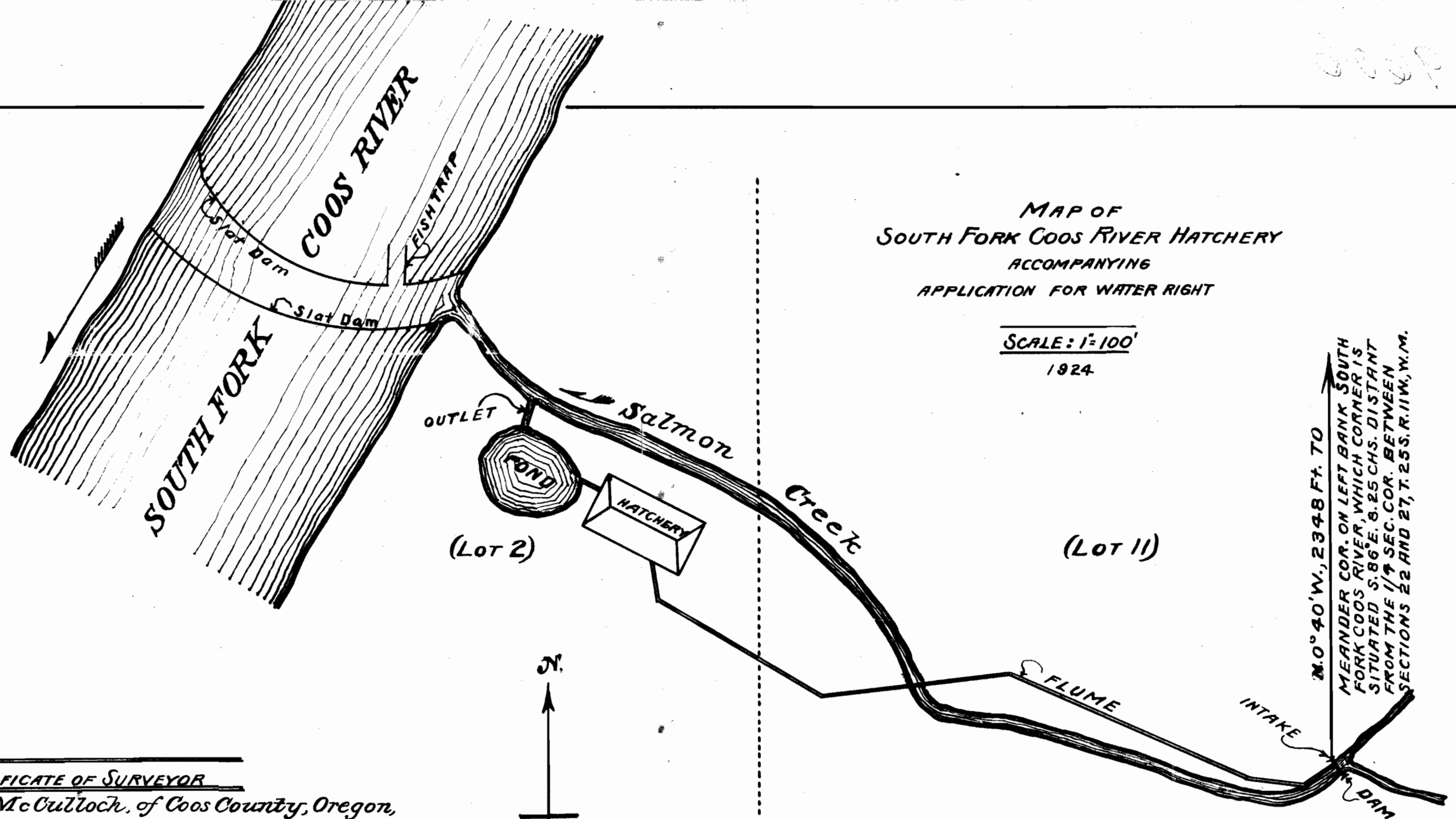


2000

MAP OF
SOUTH FORK COOS RIVER HATCHERY
ACCOMPANYING
APPLICATION FOR WATER RIGHT

SCALE: 1"=100'
1924



M.0° 40' W., 2348 Ft. TO
MEANDER COR. ON LEFT BANK SOUTH
FORK COOS RIVER, WHICH CORNER IS
SITUATED S. 86° E. 8.25 CHS. DISTANT
FROM THE 1/4 SEC. COR. BETWEEN
SECTIONS 22 AND 27, T. 25S. R. 11W., N.M.

CERTIFICATE OF SURVEYOR

I, C. S. McCulloch, of Coos County, Oregon,
do hereby certify that this map was made from
notes taken during an actual survey made by
me in June, 1924, and that it correctly rep-
resents the works described in the accompa-
nying application, together with the location
of streams in the immediate vicinity.

C. S. McCulloch
COUNTY SURVEYOR.

Charles S. McCulloch

T. 25S. R. 11W.

1/4 CENT. SEC. 27

STATE ENGINEER
RECEIVED

JUN 18 1924

SALMON

Application No 9606
Permit No 6469

2000

2000