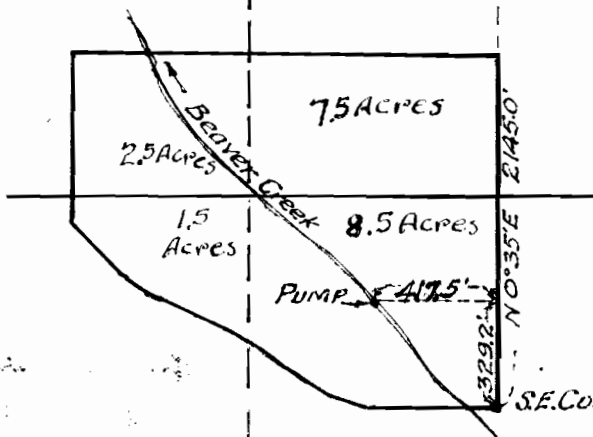


10358

1/4 Cor.

858.0'



Application No. 10358
Permit No. 8052

12

Sec. 12, Twp. 15, R. 3E W.M.



LOCATION OF PUMP
 FOR IRRIGATION OF
 M. TAMURA'S PLACE IN
 SEC. 12, TWP. 15, R. 3E W.M.
 SCALE 660' = 1"

Note:-
 Areas in Acres
 indicated are
 for irrigated
 Acreage.