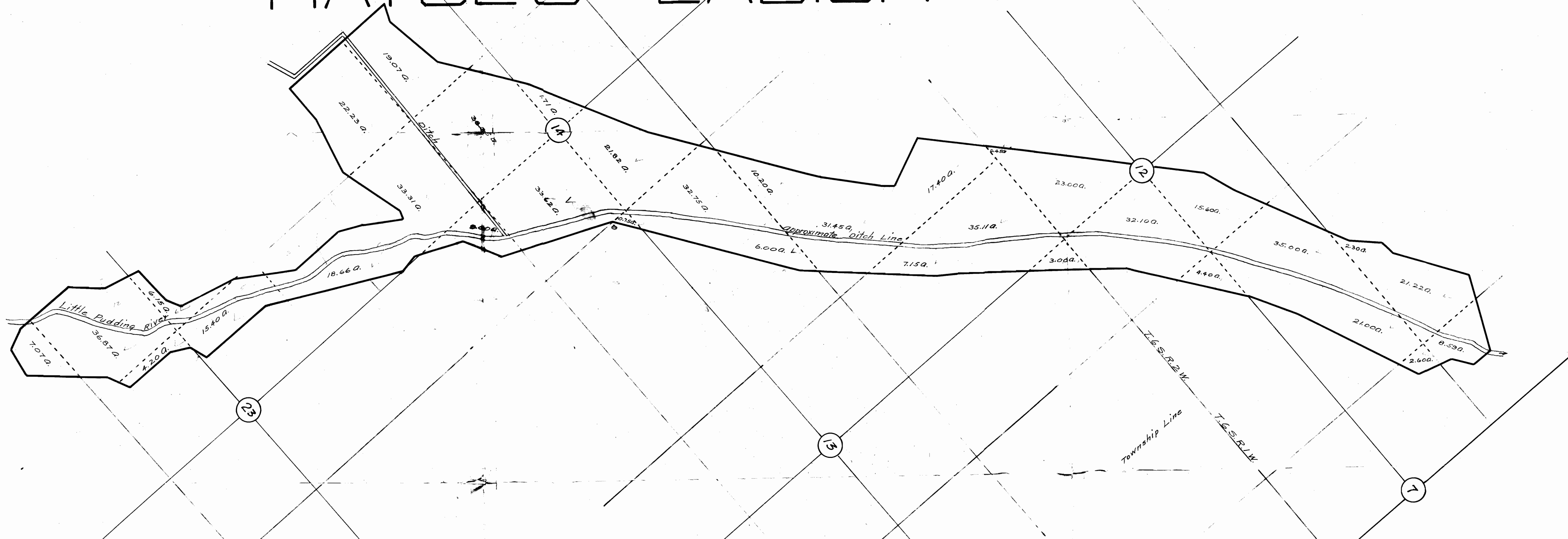
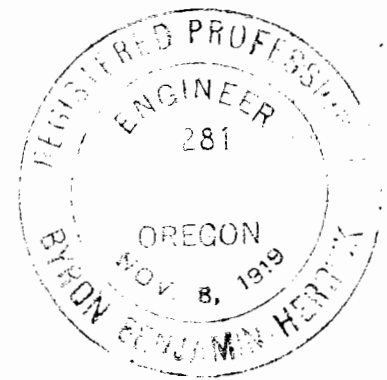


# HAYSE'S LABISH RANCH



Certificate of Surveyor  
 I, B. B. Herrick of Salem Oregon  
 do hereby certify that this map  
 was made from notes taken during  
 actual survey and Government  
 Field Notes in August 1924, and  
 it correctly represents the works  
 described in the accompanying  
 application, location of Little  
 Pudding River, and has written  
 thereon the area which it is proposed  
 to irrigate. B. B. Herrick  
 Surveyor  
 Scale: 1 inch = 10 chains  
 1 " = 660'



Application No. 9600  
 Permit No. 6535

STATE ENGINEER  
 RECEIVED  
 OCT 31 1924  
 SALEM, OREGON