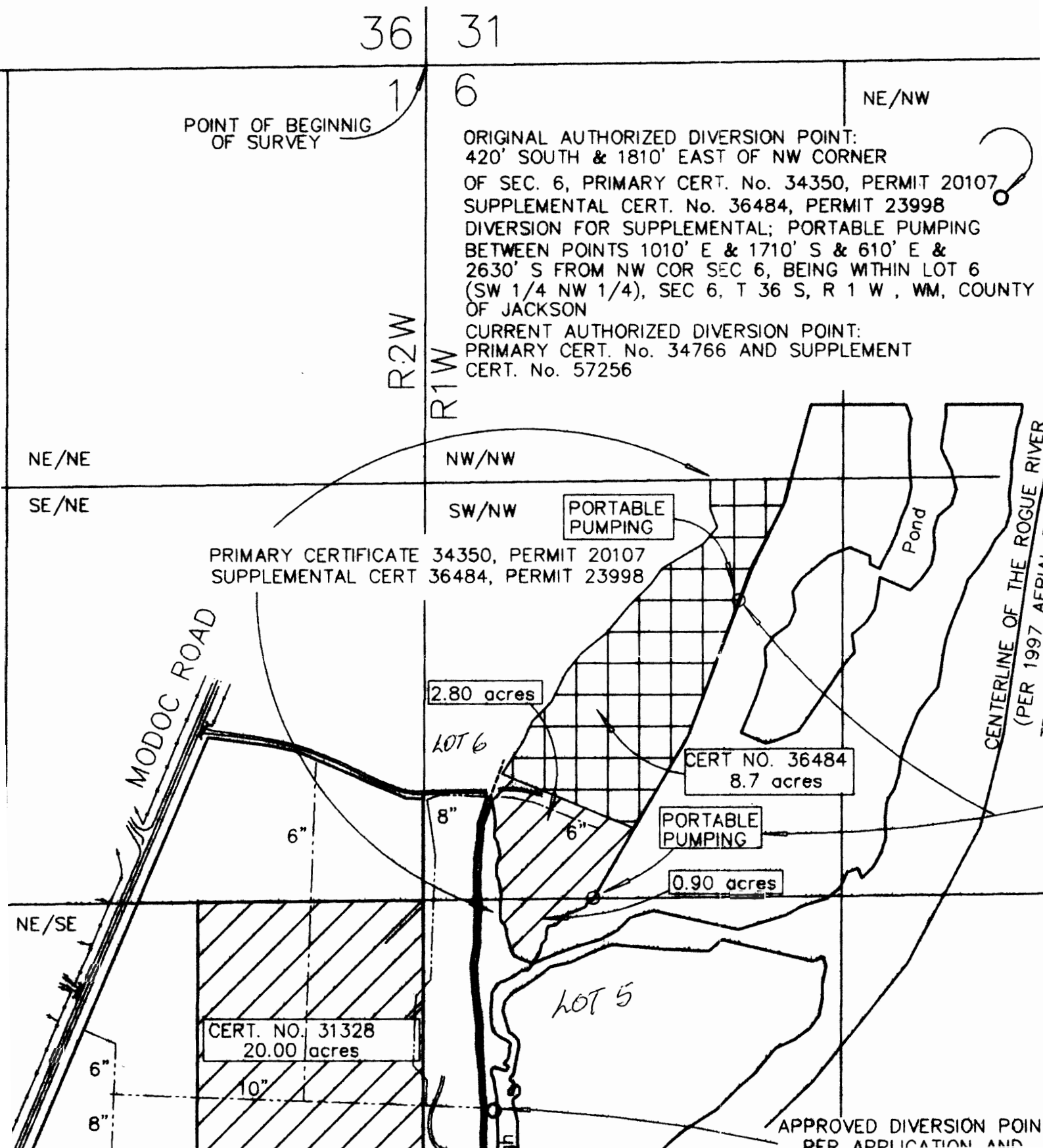


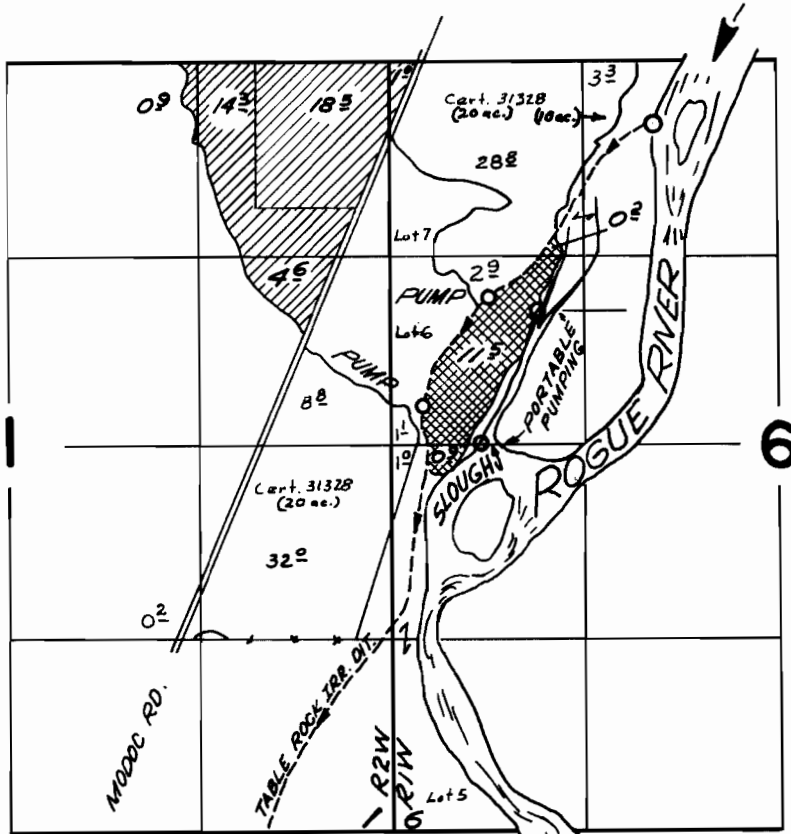
on 1, T36S, R2W, Section 6, T36S, R1W,

ASSESSOR'S MAP No. 361W06 TL's 401, 600, 701

ASSESSOR'S MAP No. 362W01 TL's 601



# T. 36S. R. 18 & 2W. W.M. :



32766

25635

30468

30468

ROGUE R.



Div. Pt. located 420 ft. S. & 1810 ft. E. from the N.W. cor. Section 6

SLOUGH



Portable Pumping bet. points located 1010 ft. E. & 1710 ft. S. and 610 ft. E. & 2630 ft. S. from the N.W. Cor. Sec. 6

## FINAL PROOF SURVEY

UNDER

25635

30468

Application No. 32766

20107

23998

Permit No. 25858

IN NAME OF

RAY W. RYAN

Surveyed June 11, 1963, by C. BAKER  
June 2, 1966 by V. GARNER