

East & West Line bet. Sec 10 & 15

W. L. or France

7

S 63° 45' W  
49.66 ch.

Rock Creek  
Wagon Bridge

P.R. Bridge

PUMP

57° 11' E  
8.35 ch. Iron pipe

County Road

SE 1/4 of NW 1/4

Wm. Head

O.W.R. & N.R.R.  
N. 50° 31' E

West  
12.87 ch.

12 1/2 acres  
Land to be irrigated

South  
6.79 ch.

S 87° 03' E  
4 ch.

S 17° 03' E  
4.22 ch.

S 87° 15' E  
6.43 ch.

Tr. 1/2 irrigation ditch  
S 62° 05' W 3 ch.  
S 43° 08' E 2.78 ch.  
S 12° 08' E 6.76 ch.  
N 12° 08' W 1.52 ch.  
N 17° 03' E 1.52 ch.

A. J. McDaniel's  
N.E. 1/4 of SW 1/4  
Sec. 15

April 1900

1373

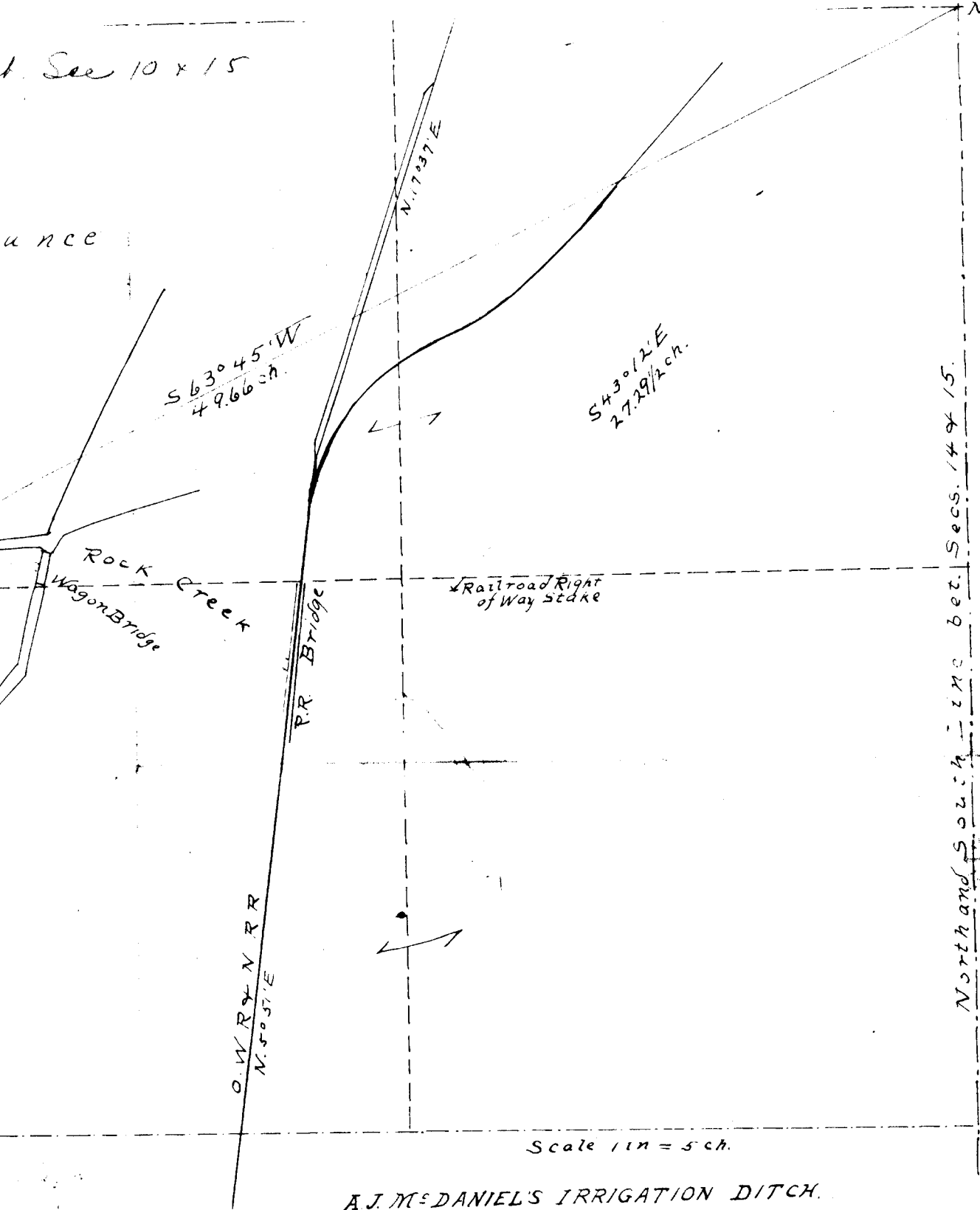
720

( Jos W. map was made by me Mar. 2 Creek and area of the to irrigate

Sec 10 x 15

u n c e

N.E. Corner  
Sec. 15  
T. 1 N., R. 20 E.



A.J. McDaniel's IRRIGATION DITCH.

Certificate of Surveyor

I, Jos. W. Kirschner of Condon, Oregon, do hereby certify that this map was made from notes taken during an actual survey made by me Mar. 28-30 1911, and that it correctly represents the Creek and proposed ditch and has written thereon the area of the smallest level subdivision which it is proposed to irrigate.

1373  
720

Jos. W. Kirschner

County Surveyor