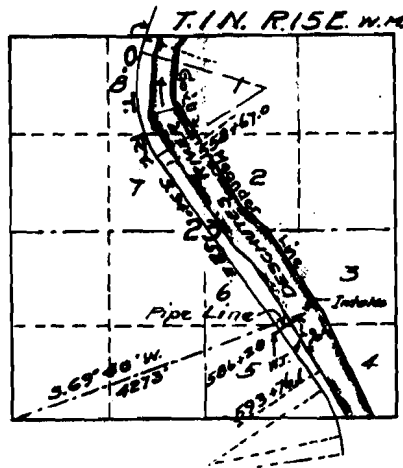


OFFICE OF STATE ENGINEER  
RECEIVED  
AUG 31 1911  
SALF A OREGON

— K'LOAN —

WATER STATION.

Application No. 167,  
Permit No. 816



I, H. K. Kuney of Fallbridge, Washington do hereby certify that this map was made from notes taken during an actual survey made under my immediate supervision on the 10<sup>th</sup> day of April 1911, and that it correctly represents the works described in the accompanying application, together with the location of streams in the immediate vicinity.

*H. K. Kuney*  
Surveyor

OREGON TRUNK RY.

MAP ACCOMPANYING APPLICATION FOR PERMIT TO  
APPROPRIATE WATER FROM DESCHUTES RIVER IN  
SEC. 23, T. 1 N. R. 15 E. W. M.

OFFICE OF CHIEF ENGINEER.

JULY 21<sup>st</sup> 1911.

SCALE: 2 IN. = 1 MI.