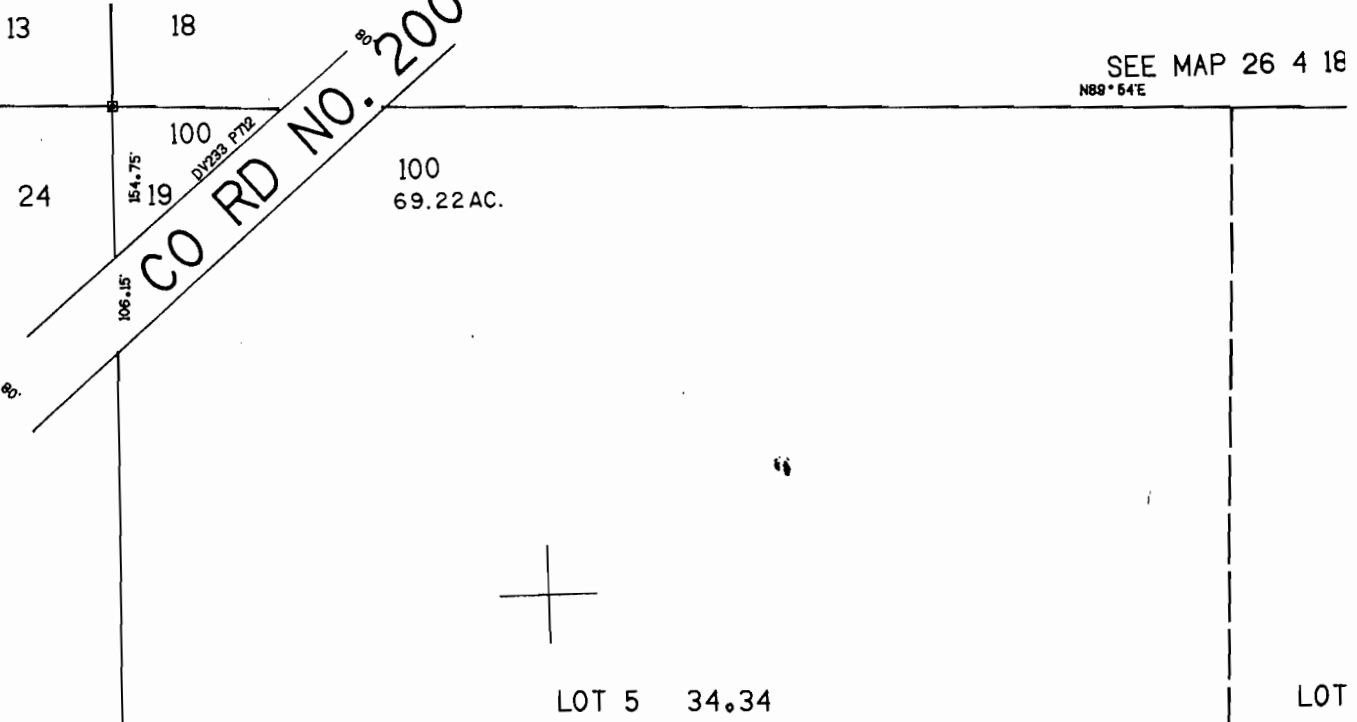


NW1/4 SEC. 19 T.26S. R.4W. W.M.  
DOUGLAS COUNTY

THIS MAP WAS PREPARED FOR  
ASSESSMENT PURPOSE ONLY.

1"=200'

SEE MAP 26 4 18  
N89°54'E



12-00

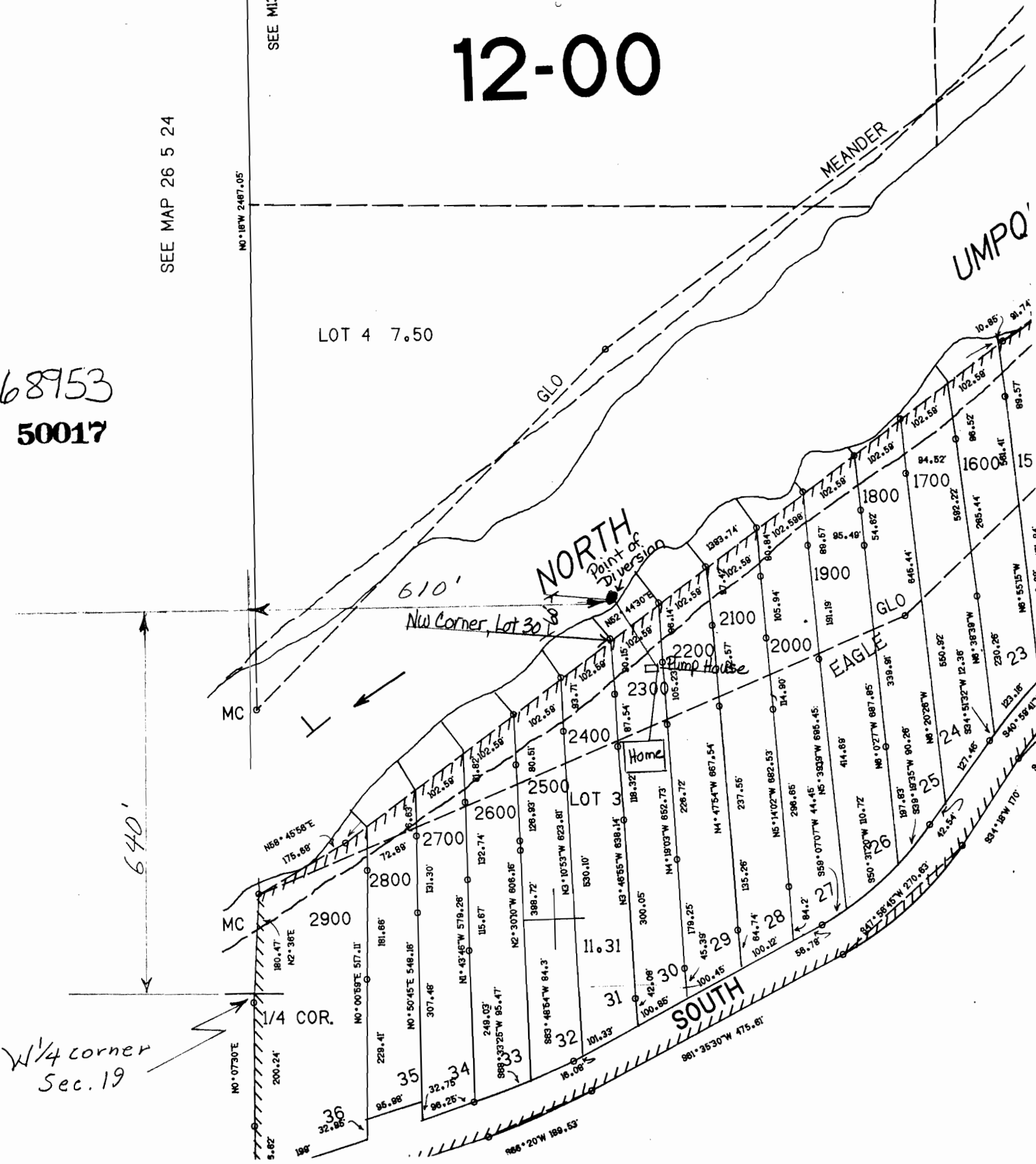
SEE MAP 26 5 24

SEE M13-57

N0°18'W 2487.05'

LOT 4 7.50

Application No. 68953  
Permit No. 50017



W/4 corner  
Sec. 19

UMPQ