

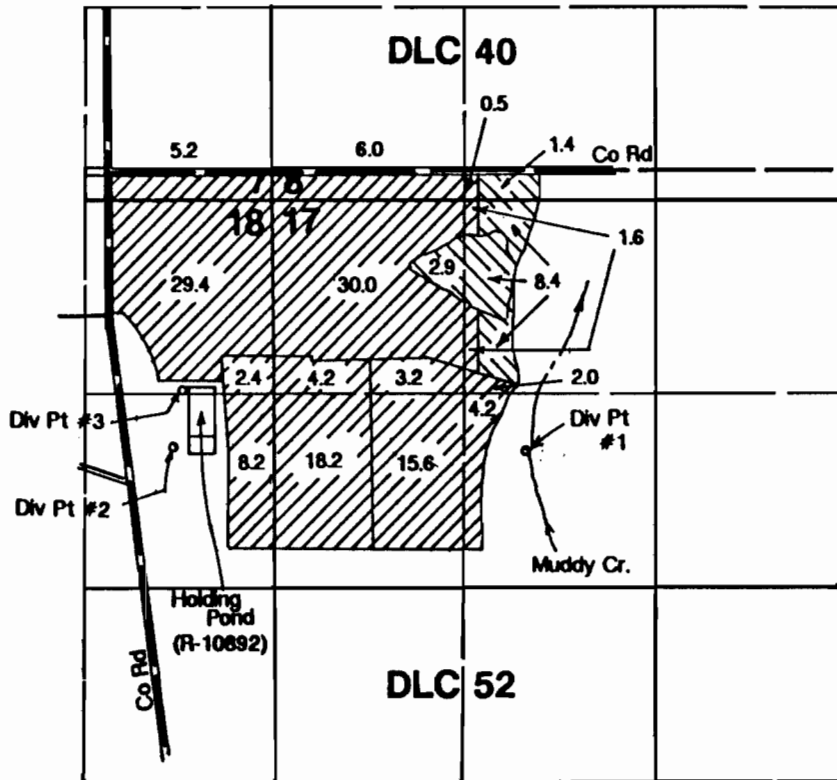
RECEIVED

JAN 14 1991

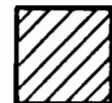
OCT 01 1990

WATER RESOURCES DEPT  
SALEM, OREGON

T.14S., R.5W., W.M.



Primary Irrigation



Supplimental Irrigation

- Div. Pt. #1 located 1700'S & 1750'E from NW corner Section 17.
- Div. Pt. #2 located 1675'S & 700'W from NE corner Section 18.
- Div. Pt. #3 located 1300'S & 625'W from NE corner Section 18.

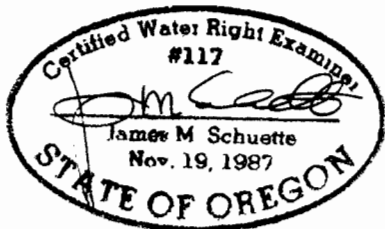
Final Proof Survey

R-69285 R-10892  
Application #69286 Permit #50183

In Name Of

John Van Beek

Surveyed on September 20, 1990 by JM Schuette



NOTE: Map is for purpose of identifying location of water right and has no intent to dimension or locate property ownership lines.