

**Remaining right for  
Primary Irrigation C. 79537**

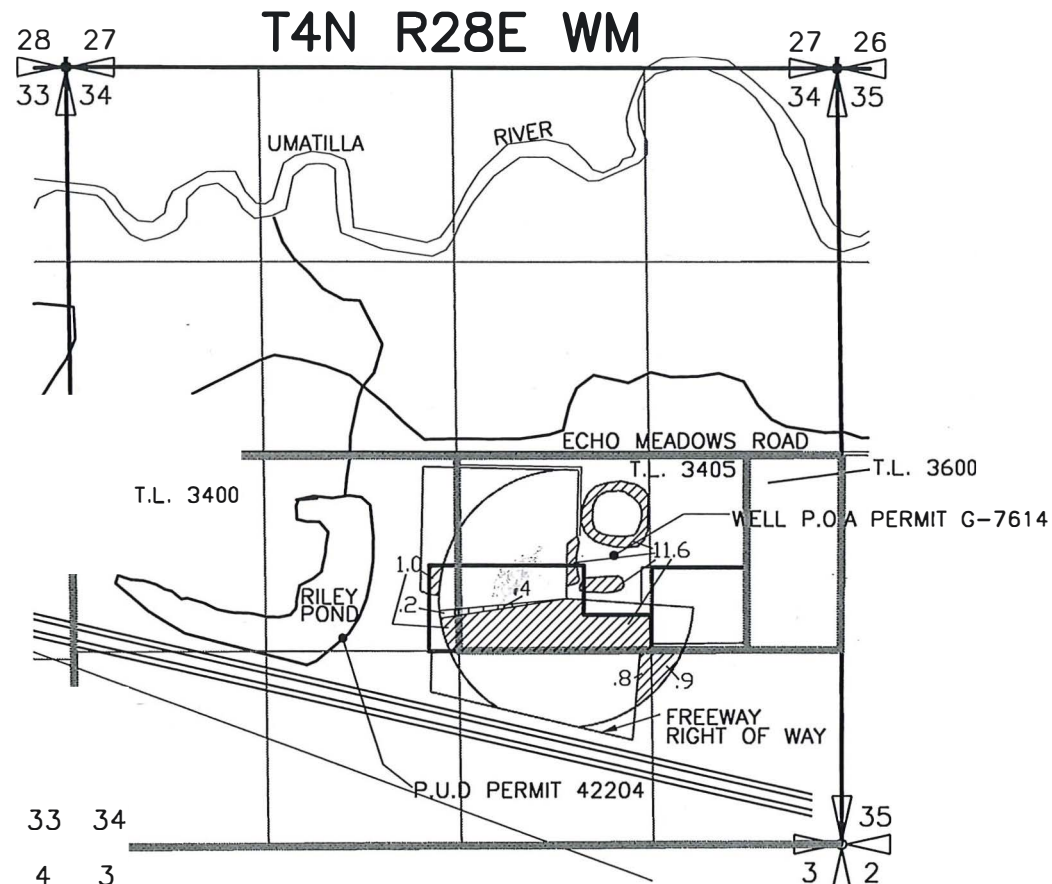
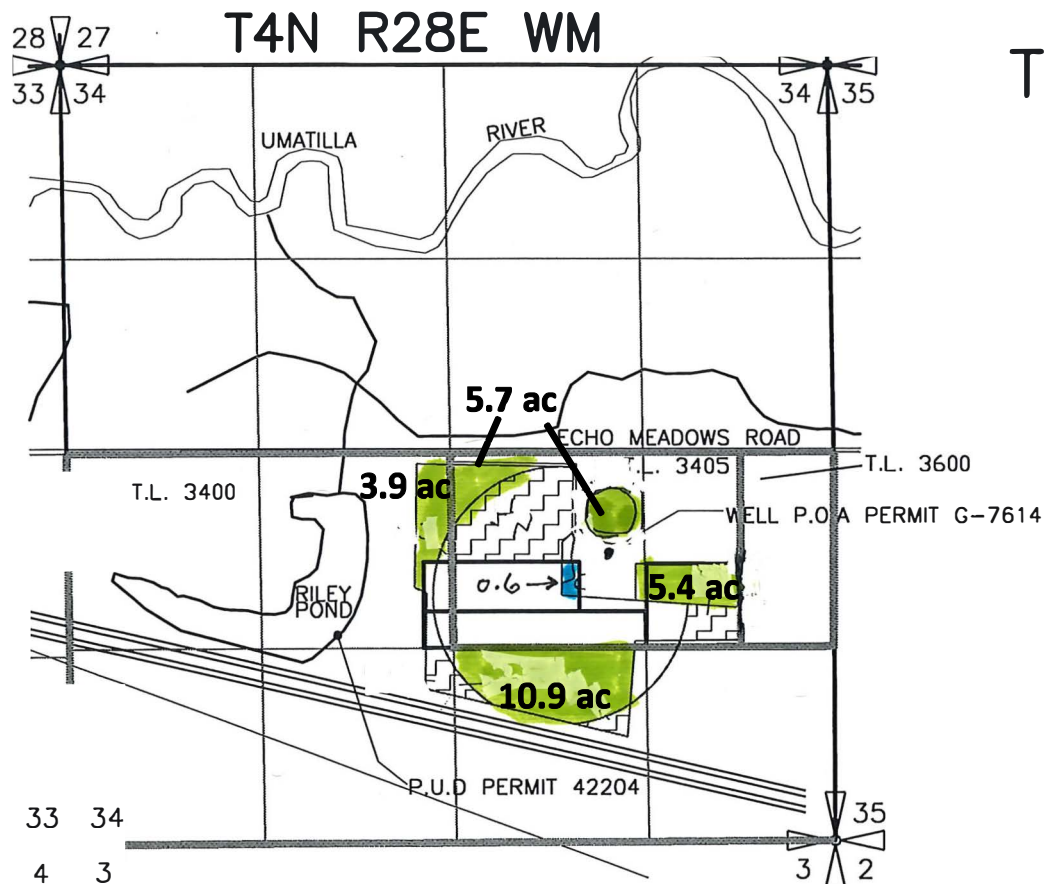
**Remaining rights for  
Supplemental Irrigation C.  
79538 & C. 80421**

**T-8865**

2001 T-8865

**WESTLAND IRRIGATION DISTRICT  
540.580 AMENDED 1/10/02 TRANSFER MAP B FOR  
DOUBLE M RANCH INC**

**MAP 2 OF 2  
TRANSFER T-8865**



ATTACHMENT IV

P.O.A FOR PERMIT G-7614: 620' SOUTH AND 1560' WEST FROM E 1/4 CORNER SEC 34

P.O.D FROM RILEY POND: PERMIT 42204 1460' NORTH AND 1840' EAST FROM SW CORNER SECTION 34.

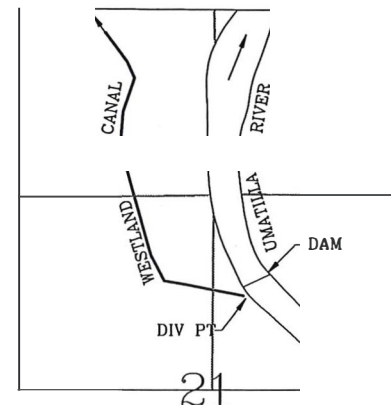
P.O.D FOR PERMIT 53063 #1 150' NORTH AND 710' WEST FROM THE S 1/4 CORNER SECTION 27, T.4N., R.28 E., W.M. #2 550' NORTH AND 1300' WEST FROM THE SE CORNER SECTION 5, T.3N., R.28 E., W.M.

FROM

PERMITS 4220 & G-7614 \*BECOME SUPPLEMENTAL IN THESE AREAS

*WIP 22-02*

T.3N., R.29E., W.M.



DIV PT LCT N.76°45'56"E. 2913.19' FROM W.1/4 COR. SEC 21

Well = RR 79537 25.9 acres (P)

Well = RR 79538 0.6 acres (S)

*POND*

+ = RR 80421 26.5 acres (S)

NOTE:  
THE PURPOSE OF THIS MAP IS TO IDENTIFY THE APPROXIMATE LOCATION OF THE WATER RIGHT. IT IS NOT INTENDED TO PROVIDE INFORMATION RELATIVE TO THE LOCATION OF PROPERTY OWNERSHIP BOUNDARY LINES.



Architects & Engineers  
Kennewick, WA 99336

3522.052  
01/10/02  
3522052H2.DWG