

SE1/4 SEC. 25 T.27S. R.7W. W.M.
DOUGLAS COUNTY

1"=200'

69437 79655

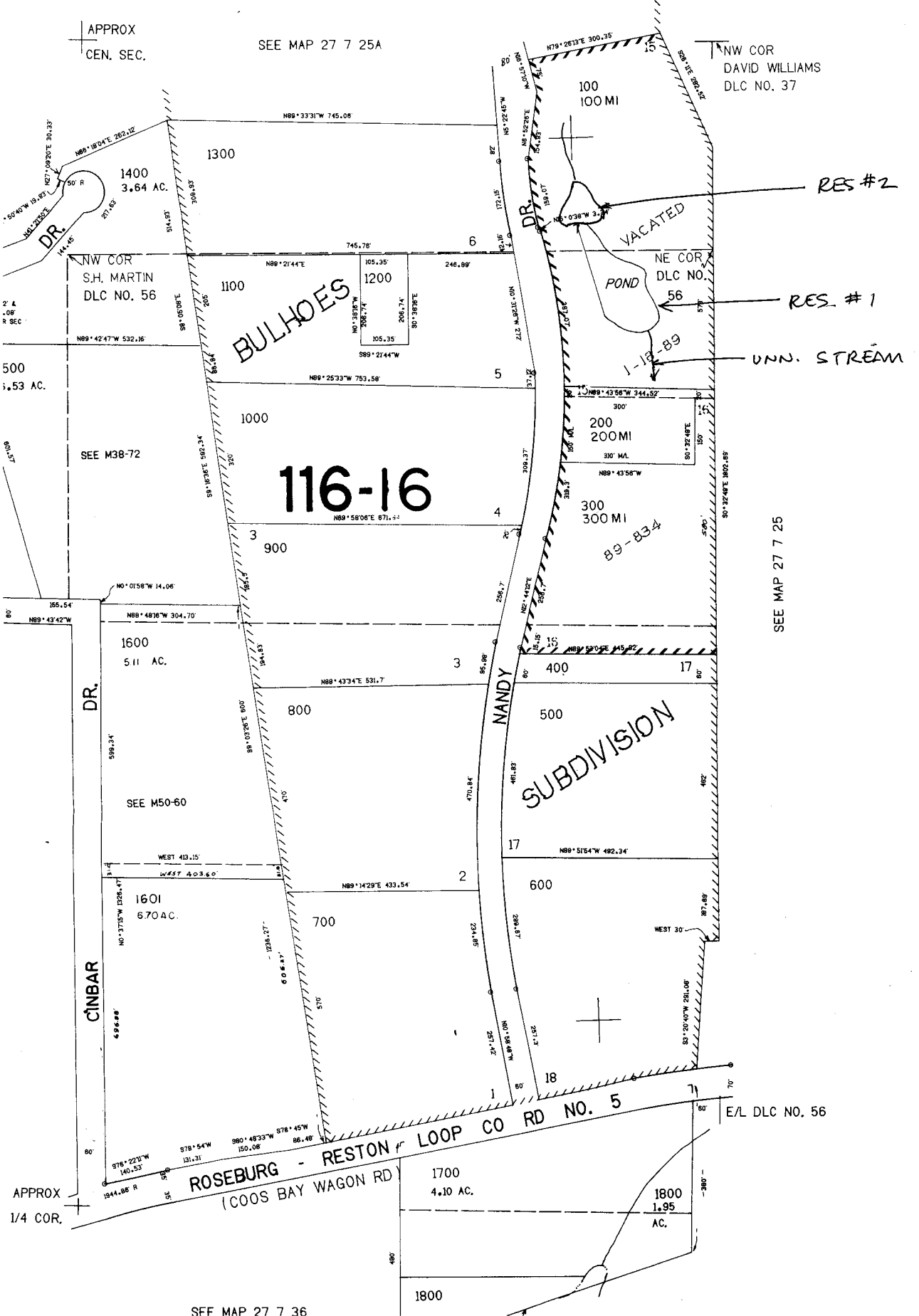
CERTIFICATE NO.

RED FOR ONLY.

APPROX
CEN. SEC.

SEE MAP 27 7 25A

NW COR
DAVID WILLIAMS
DLC NO. 37



RES #2

RES #1

UNN. STREAM

SEE MAP 27 7 25

SEE MAP 27 7 36