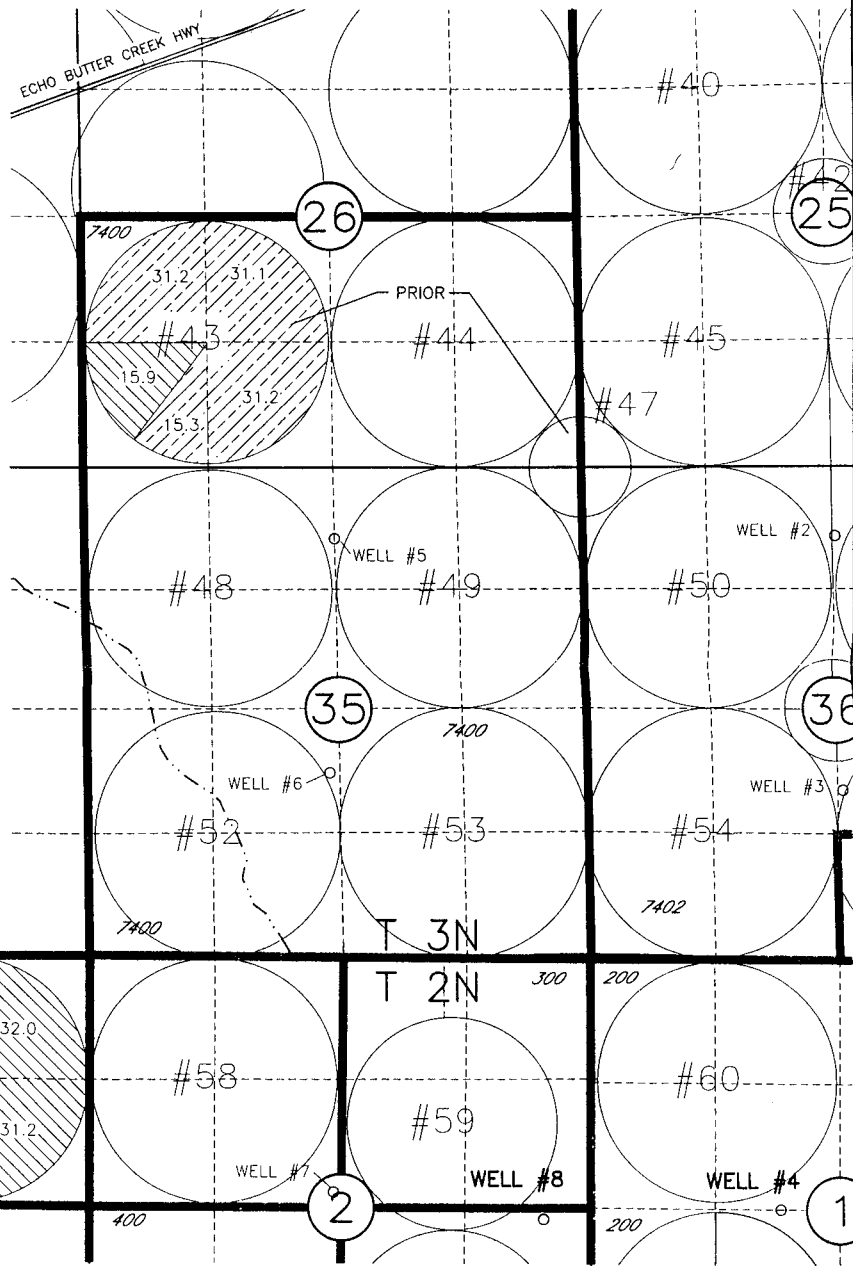


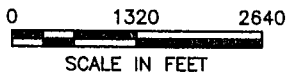
FINAL PROOF MAP OF TRANSFER T-8419 CHESTER PRIOR T2N & T3N RANGE 28E WM

RECEIVED
 JUL 20 2001
 WATER RESOURCES DEPT
 SALEM, OREGON



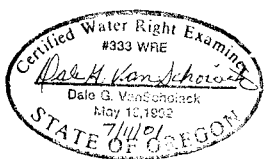
HATCHERING LEGEND

- PERMIT G-6588
- PERMIT G-7014



POINTS OF APPROPRIATION FOR PERMIT G-6588 AND G-7014

- WELL 4 - 2640 FEET SOUTH AND 630 FEET WEST FROM N1/4 CORNER SECTION 1
- WELL 8 - 2800 FEET SOUTH AND 500 FEET WEST FROM NE CORNER SECTION 2



NOTE:
THE PURPOSE OF THIS MAP IS TO IDENTIFY THE APPROXIMATE LOCATION OF THE WATER RIGHT. IT IS NOT INTENDED TO PROVIDE INFORMATION RELATIVE TO THE LOCATION OF PROPERTY OWNERSHIP BOUNDARY LINES.

3522.077
 06/15/01
 3522FP01.DWG