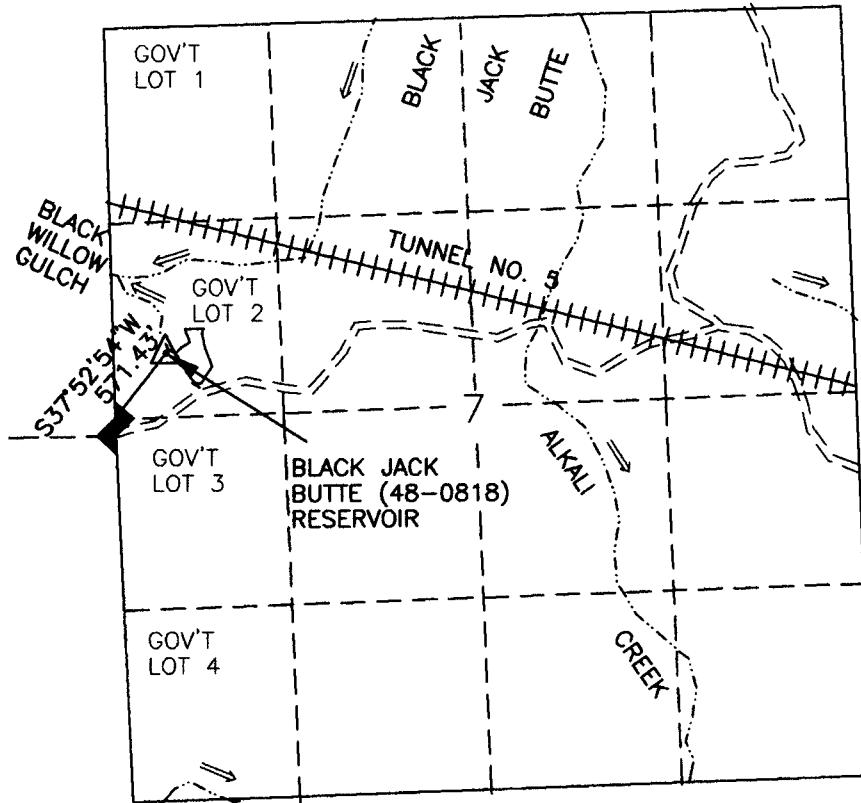


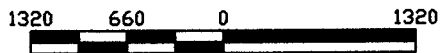
# WATER RIGHTS MAP FOR LOCATION CHANGE

GOV'T LOT 2 SEC 7 T 22S R 46E W.M.  
U.S.G.S. QUAD - OWYHEE DAM, OREG. - 7 1/2'



- LEGEND**
- RESERVOIR
  - ROAD
  - CHANNEL
  - FD SEC COR
  - TUNNEL
  - PROJECT MON.

## BLACK JACK BUTTE (48-0818) RESERVOIR



SCALE 1"=1320'

THIS MAP IS FOR THE PURPOSE OF LOCATING A WATER RIGHT AND IS NOT INTENDED TO PROVIDE LEGAL DIMENSIONS FOR LOCATION OF PROPERTY BOUNDARIES.



UNITED STATES DEPARTMENT OF THE INTERIOR BUREAU OF LAND MANAGEMENT DIVISION OF OPERATIONS VALE DISTRICT	
<b>BLACK JACK BUTTE (48-0818)</b>	
DESIGNED	<i>Long S. Hall</i>
REVIEWED	<i>Thomas Messer</i>
APPROVED	<i>Thomas Messer</i> <small>CHIEF, BRANCH OF ENGINEERING</small>
DRAWN: CG	SCALE: 1"=1320'
DATE: 11/06/02	SHEET 1 OF 1
DRAWING NO. OR-03-9172.45-1157	

ACAD2000!  
DWG FILE: BLACKJACK-LOC-CHG

**RECEIVED**

DEC 09 2002

WATER RESOURCES DEPT.  
SALEM, OREGON