

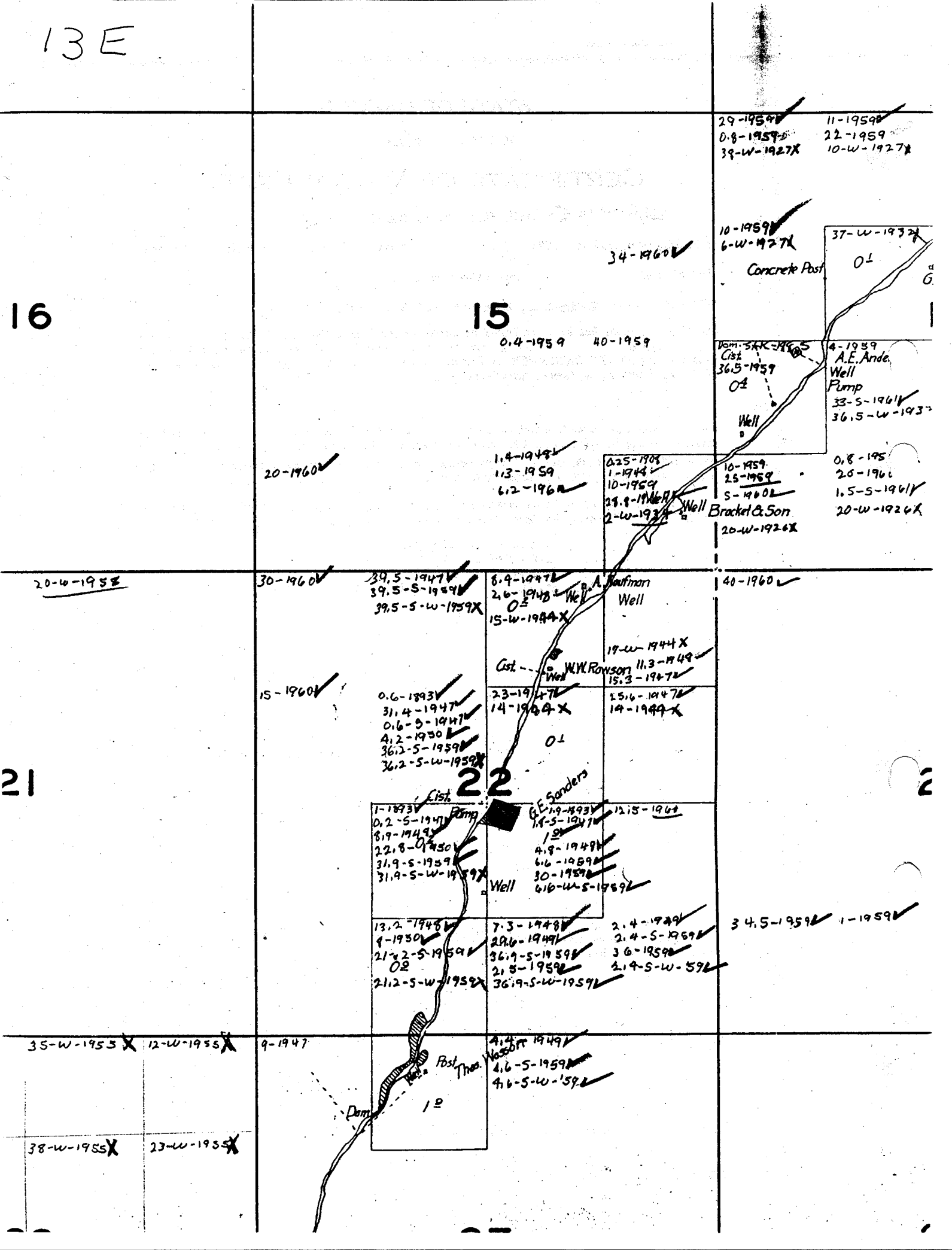
13E

16

15

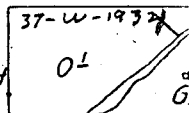
21

22



29-1959 ✓ 11-1959 ✓  
 0.8-1959 ✓ 22-1959 ✓  
 39-W-1927X 10-W-1927X

10-1959 ✓  
 6-W-1927X  
 Concrete Post



34-1960 ✓

0.4-1959 40-1959

Dom. SAK-1965  
 Cist 36.5-1959  
 Well  
 4-1959  
 A.E. Ande  
 Well  
 Pump  
 33-S-1961 ✓  
 36.5-W-1937 ✓

20-1960 ✓

1.4-1948 ✓  
 1.3-1959 ✓  
 6.2-1960 ✓

0.25-1908  
 1-1944 ✓  
 10-1959 ✓  
 29.8-1960 ✓  
 2-W-1937 ✓  
 Well  
 Bracket & Son  
 20-W-1926X

0.8-195 ✓  
 20-196 ✓  
 1.5-S-1961 ✓  
 20-W-1926X

20-W-1958

30-1960 ✓

39.5-1947 ✓  
 39.5-S-1959 ✓  
 39.5-S-W-1959X

8.9-1947 ✓  
 2.6-1948 ✓  
 O.S.  
 15-W-1944X  
 A. Hoffman  
 Well

40-1960 ✓

15-1960 ✓

0.6-1893 ✓  
 31.4-1947 ✓  
 0.6-S-1947 ✓  
 4.2-1930 ✓  
 36.2-S-1959 ✓  
 36.2-S-W-1959X

19-W-1944X  
 Cist. W.W. Rowson  
 Well  
 11.3-1949 ✓  
 15.3-1947 ✓  
 14-1960X  
 15.6-1947 ✓  
 14-1949X

1-1873 ✓  
 0.2-S-1947 ✓  
 8.9-1949 ✓  
 22.8-O-1950 ✓  
 31.9-S-1959 ✓  
 31.9-S-W-1959X  
 Pump  
 Well

G.E. Sanders  
 1.9-1949 ✓  
 1.9-S-1947 ✓  
 1.9  
 4.9-1949 ✓  
 6.6-1959 ✓  
 30-1959 ✓  
 6.6-W-S-1959 ✓

13.2-1948 ✓  
 9-1950 ✓  
 21.2-S-1959 ✓  
 O.S.  
 21.2-S-W-1959 ✓

7.3-1948 ✓  
 29.6-1949 ✓  
 36.9-S-1959 ✓  
 21.5-1959 ✓  
 36.9-S-W-1959 ✓

34.5-1959 ✓ 1-1959 ✓

35-W-1955X 12-W-1955X 9-1947

38-W-1955X 23-W-1955X

4.4-1949 ✓  
 4.6-S-1959 ✓  
 4.6-S-W-1959 ✓  
 Post. The.  
 1.2

