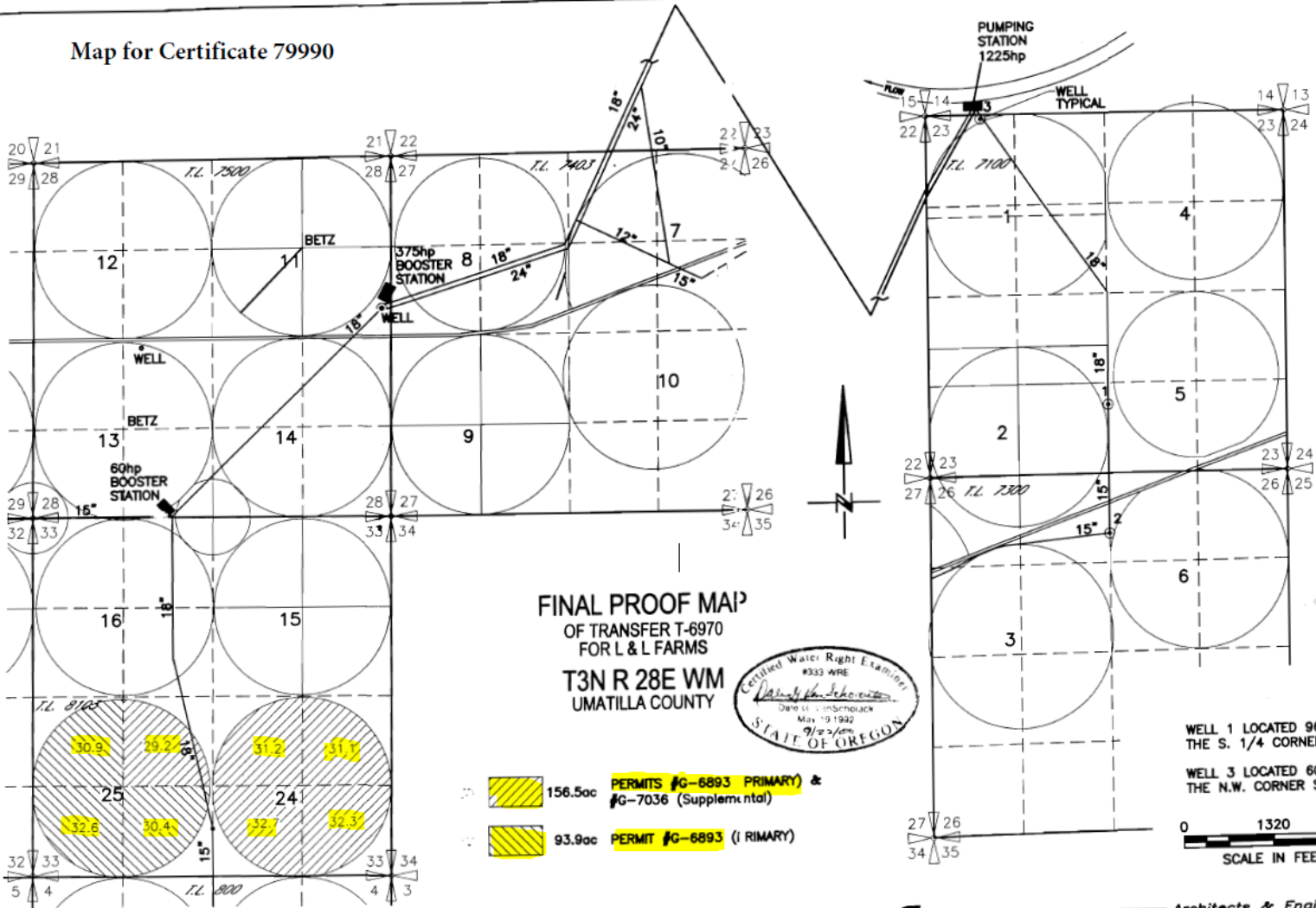
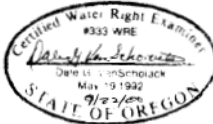


Map for Certificate 79990



FINAL PROOF MAP
 OF TRANSFER T-6970
 FOR L & L FARMS
 T3N R 28E WM
 UMATILLA COUNTY



- 156.5ac PERMITS #G-6893 (PRIMARY) & #G-7036 (Supplemental)
- 93.9ac PERMIT #G-6893 (PRIMARY)

WELL 1 LOCATED 960' N. & 30'E. FROM THE S. 1/4 CORNER SECTION 23
 WELL 3 LOCATED 60' S. & 820'E. FROM THE N.W. CORNER SECTION 23

0 1320 2640
 SCALE IN FEET
 9/21/00
 3522.005
 3522LLFP.DWG

NOTE: THE PURPOSE OF THIS MAP IS TO IDENTIFY THE APPROXIMATE LOCATION OF THE WATER RIGHT. IT IS NOT INTENDED TO PROVIDE INFORMATION RELATIVE TO THE LOCATION OF PROPERTY OWNERSHIP BOUNDARY LINES.

SCM Consultants, Inc. Architects & Engineers
 Kennewick, WA 99336