

THIS MAP WAS PREPARED FOR ASSESSMENT PURPOSE ONLY.

HARNEY COUNTY

1"=800'

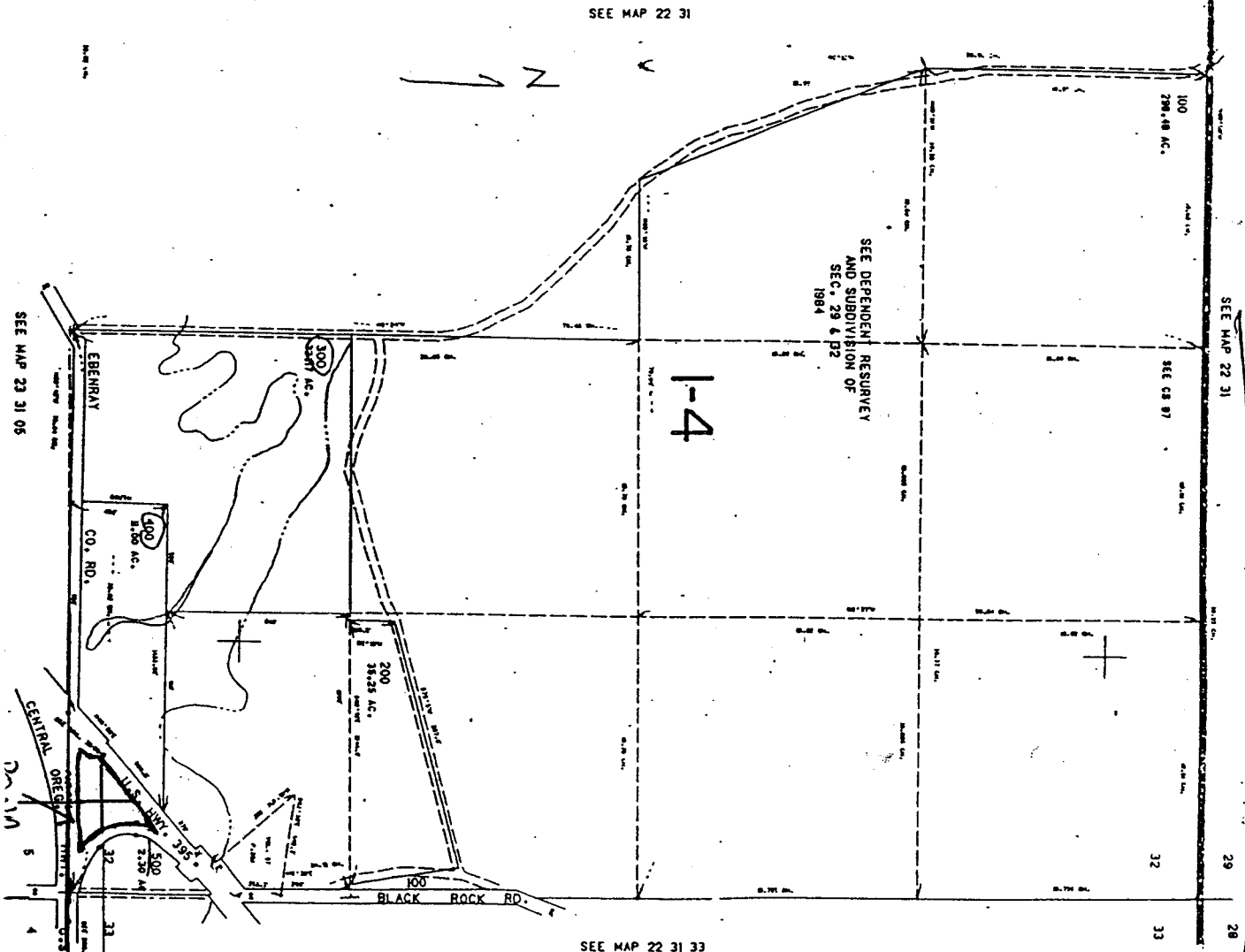
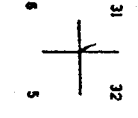
WORKING COPY!

Ride Iroffke gave location coordinates over the phone. Permission to write on map. WRG

T.225.R.31E.

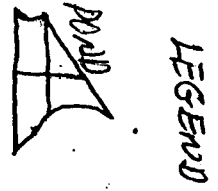
RECEIVED  
AUG 22 2002  
WATER RESOURCES DEPT  
SALEM, OREGON

Application N.R-84986  
Permit N.R.



SEE MAP 23 31 05

SEE MAP 23 31 05



714,000

