

1301  
6.55 Ac.

30.30 AC.  
1300

1300

Revised map  
4-12

S 89°

S 89° 44' 15" W  
635.55'

S 4° 30' E  
150'

1500  
45.35 Ac.

2506.05 AK  
S 89° 33 1/2' W

1500

RECEIVED

NOV 08 2002

WATER RESOURCES DEPT.  
SALEM, OREGON

28 27  
33 34

Pond area is within creek bed generally located within

Pay lots 3400 & 1500 and 1300 and portions of 200 thru 1000

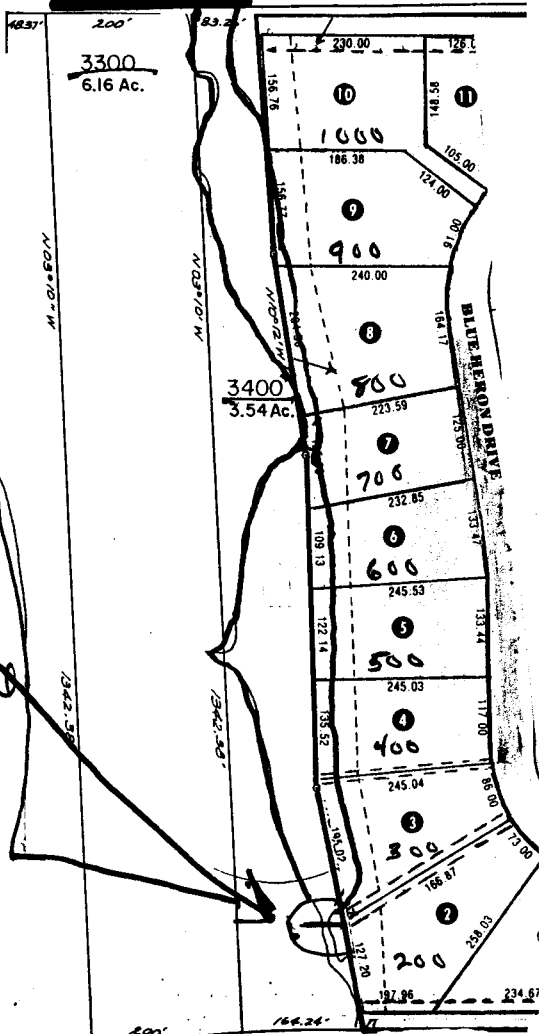
1700 1.34 Ac.

3300  
6.16 Ac.

Application No. R-84722  
Permit No. R-13145

1550

Structure located 1212 FT. South and 327 FT. East of the corner of Sec 27, 28, 33 and 34



SEE MAP 7 10 33A

PROPERTY OF THE CLATSOP COUNTY ASSESSORS OFFICE



Scale 3/4 inch to 200 FT

CO.

RD.