

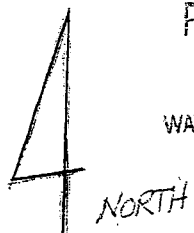
Application No. R-85172
 Permit No. R-13457

17502W 25

RECEIVED RECEIVED

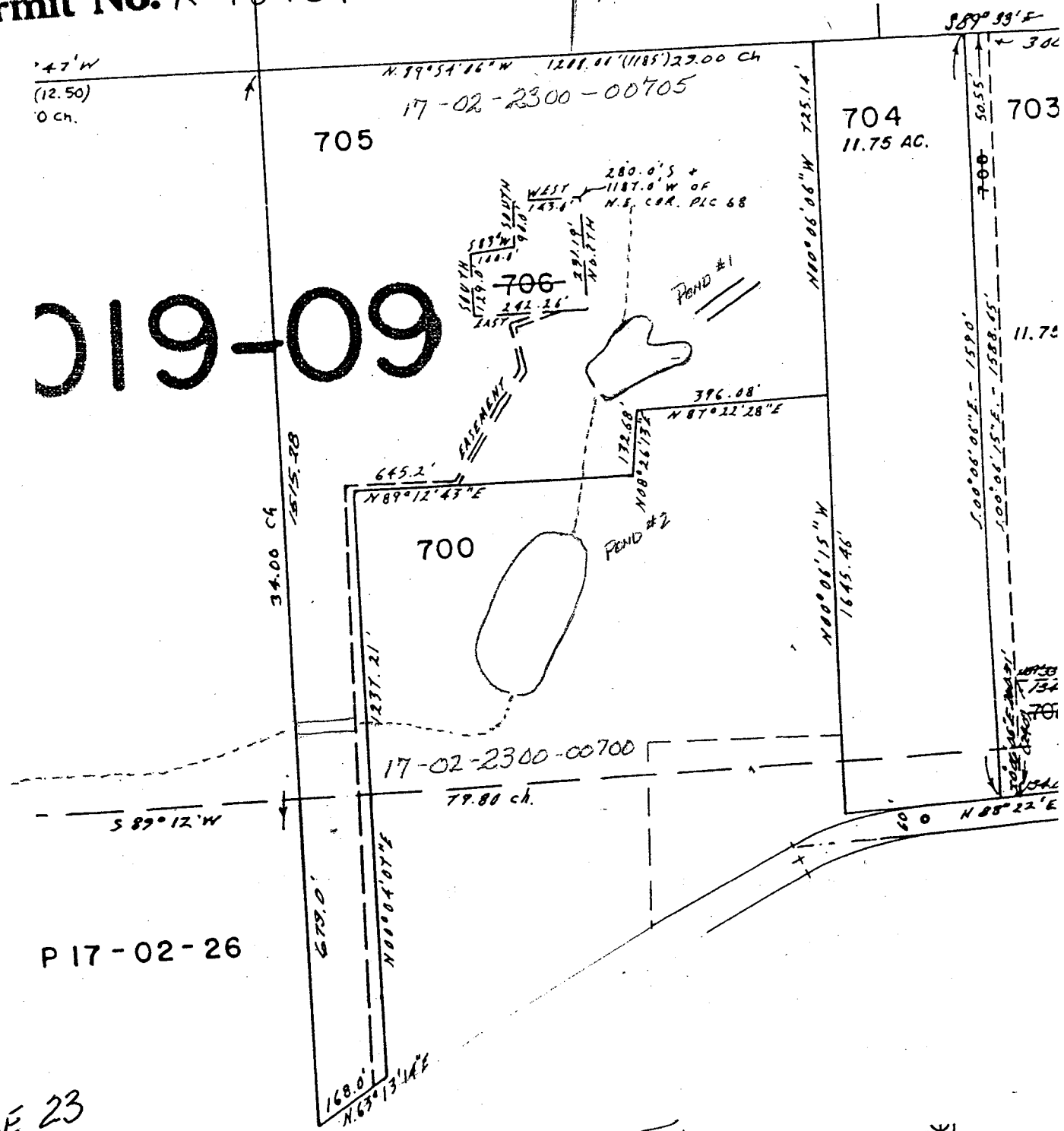
APR 22 2002 DEC 13 2002

WATER RESOURCES DEPT. SALEM, OREGON WATER RESOURCES DEPT. SALEM, OREGON



47' W
 (12.50)
 0 ch.

019-09



P 17-02-26

NOTE: SW SE 23

POND 1: 940' N & 1840' W;
 FROM SE CORNER OF SECTION 23 IN SW SE

JERRY D TOY

NNE COR
 DIC 54

RECEIVED

MAY 13 2002

WATER RESOURCES DEPT. SALEM, OREGON