

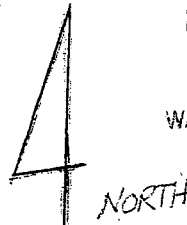
Application No. R-85173
 Permit No. R-13458

17S02W 23

RECEIVED

APR 22 2002

WATER RESOURCES DEPT.
 SALEM, OREGON



47' W
 (12.50)
 0 ch.

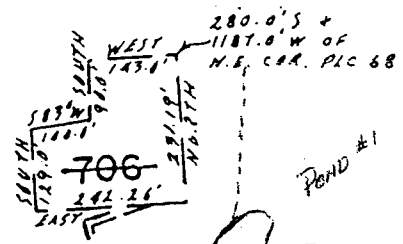
N 89° 54' 26" W 1288.61' (1185') 23.00 CH
 17-02-2300-00705

705

704
 11.75 AC.

703

019-09



POND #1

700

POND #2

34.00 CH
 1875.78

N 00° 06' 06" W 725.14'

N 00° 06' 15" W 1645.46'

S 89° 33' E
 300'
 50.55'
 700'
 11.75
 1590'
 100° 06' 15" E = 1588.15'

645.2'
 N 89° 12' 43" E

396.08'
 N 87° 22' 28" E

P 17-02-26

17-02-2300-00700
 79.80 ch.

RECEIVED

DEC 13 2002

WATER RESOURCES DEPT.
 SALEM, OREGON

NOTE:
 SW SE 23

JERRY D TOY

NNE COR
 DIC 54

POND 2 370' N & 2080' W

RECEIVED

MAY 13 2002

WATER RESOURCES DEPT.
 SALEM, OREGON

FROM SE CORNER OF SECTION 23 IN SW SE