

WATER RESOURCES DEPT.  
SALEM, OREGON

SEP 1 1 2000

RECEIVED

40.2

15  
2501  
20.3 AC.

14  
2502  
19.35 AC.

2500  
80.3 AC.

Woodard

Woodard

Wilson

2400  
70.0 AC.

2300  
7.56 AC.

2200  
5 AC.

4100  
5.14 AC.

4200  
5.08 AC.

4300  
3.15 AC.

4300  
3.15 AC.

4200  
3.15 AC.

4100  
3.15 AC.

4000  
3.15 AC.

3800  
3.15 AC.

3700  
3.15 AC.

3600  
3.15 AC.

3500  
3.15 AC.

3400  
3.15 AC.

3300  
3.15 AC.

3200  
3.15 AC.

3100  
3.15 AC.

3000  
3.15 AC.

2900  
3.15 AC.

2800  
3.15 AC.

2700  
3.15 AC.

2600  
3.15 AC.

2500  
3.15 AC.

2400  
3.15 AC.

2300  
3.15 AC.

2200  
3.15 AC.

2100  
3.15 AC.

2000  
3.15 AC.

1900  
3.15 AC.

1800  
3.15 AC.

1700  
3.15 AC.

1600  
3.15 AC.

1500  
3.15 AC.

1400  
3.15 AC.

1300  
3.15 AC.

1200  
3.15 AC.

1100  
3.15 AC.

1000  
3.15 AC.

900  
3.15 AC.

800  
3.15 AC.

700  
3.15 AC.

600  
3.15 AC.

500  
3.15 AC.

400  
3.15 AC.

300  
3.15 AC.

200  
3.15 AC.

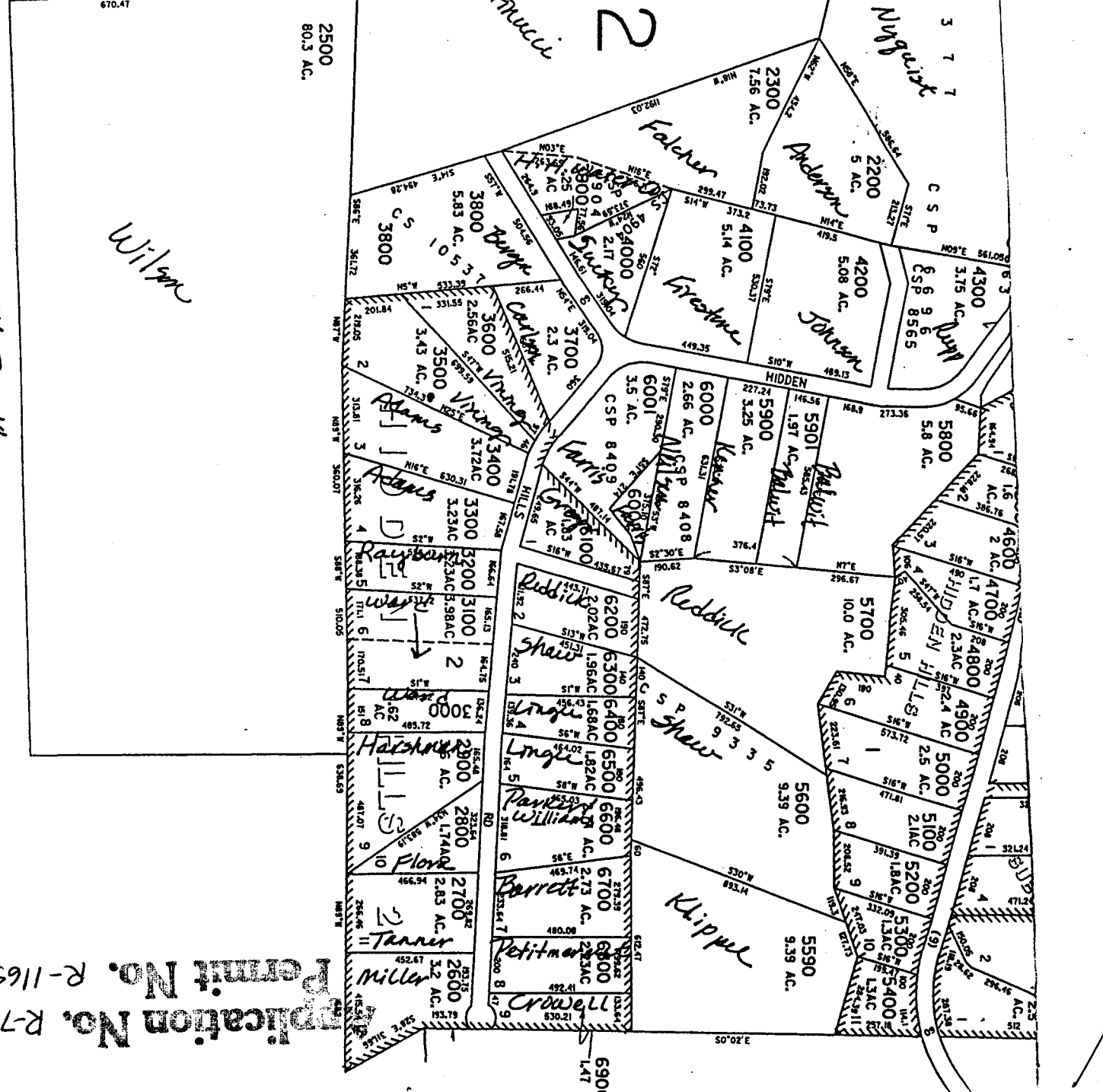
100  
3.15 AC.

T 4S R 5 W Sec. 14

NW 1/4 SE 14

Application No. R-73813

Permit No. R-11657



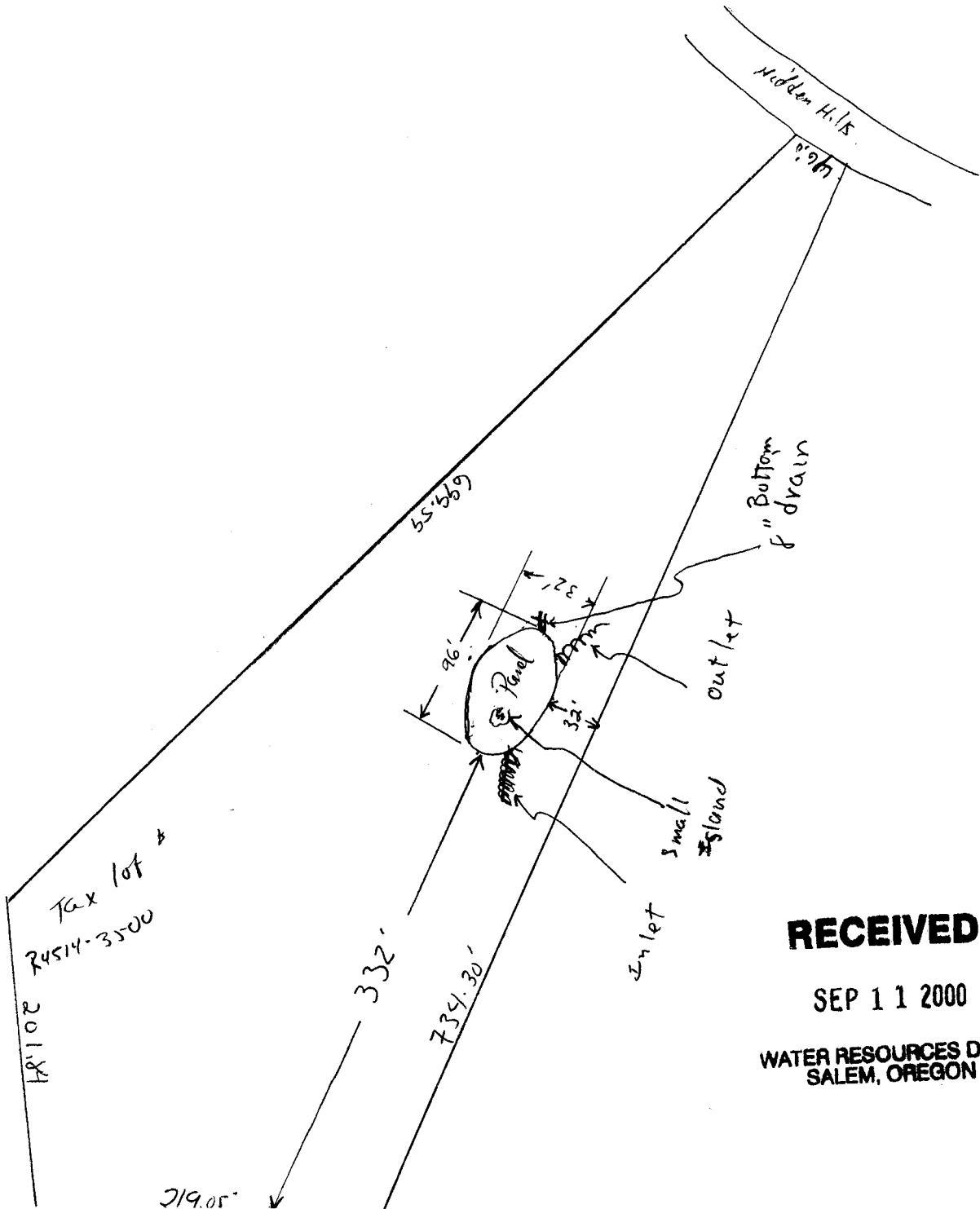


Scale

1" = 100'

Application No. R-73813  
Permit No. R-11657

T45 R5W Sec. 14  
NW<sup>1</sup>/<sub>4</sub> SE<sup>1</sup>/<sub>4</sub>



**RECEIVED**

SEP 11 2000

WATER RESOURCES DEPT.  
SALEM, OREGON