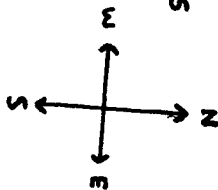
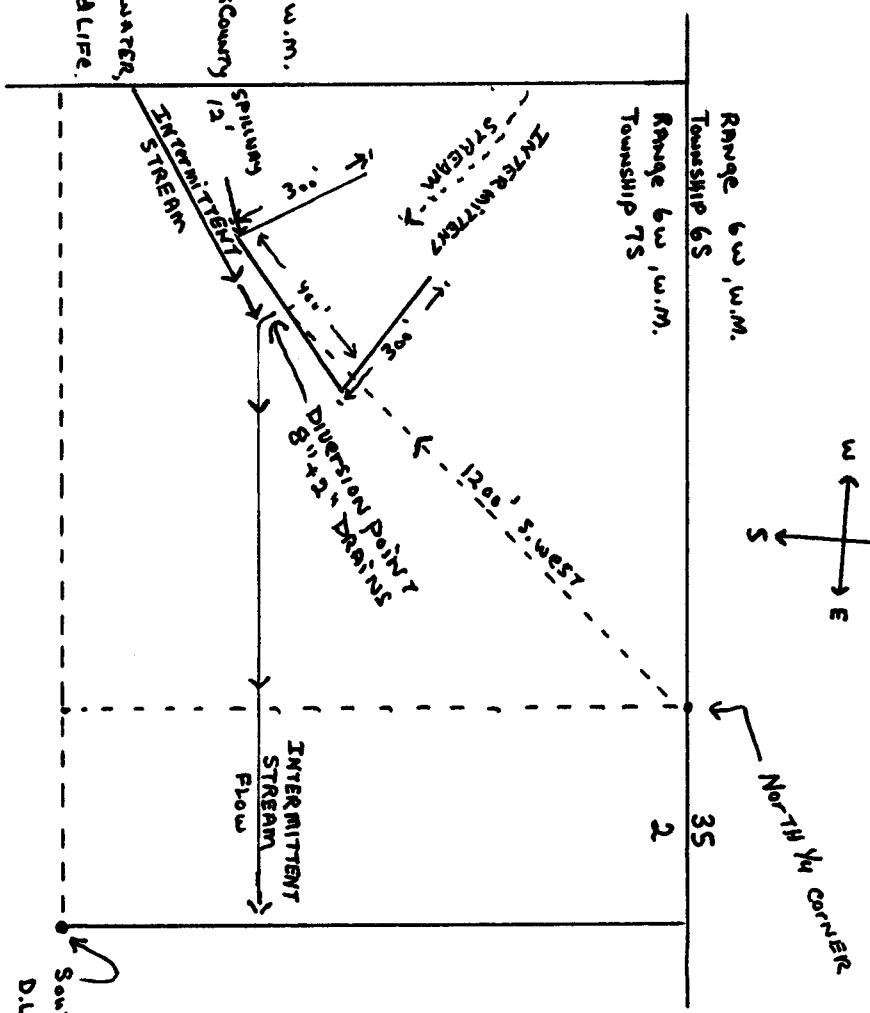


SEE MAP No. 6635



SCALE: 1" = 400' - 0"



NE 1/4, NE 1/4  
NORTH HALF OF SECTION 2  
T.S. 7S, R.6w., w.m.

**RECEIVED**

SEP 18 2000

WATER RESOURCES DEPT.  
SALEM, OREGON

SOUTH EAST CORNER of Harlow Barney  
D.L.C. No. 52  
TAXLOT 0500

Legal Des.

The EAST HALF of the DONATION LAND CLAIM of Harlow Barney & wife, Notification # 5206 Being claim # 92 IN T36 SOUTH, Range 6 west of Willamette meridian, and claim # 52 IN the T57 SOUTH, Range 6 west of the Willamette Meridian.

POINT of DIVERSION location:

NE 1/4, NW 1/4, SECTION 2, T7S, R6w., w.m.

PLACE of USE: 0500 TAXLOT Polk County

MULTI-PURPOSE: OFF-STREAM CATTLE WATER, AQUATIC, AND FIRE PROTECTION, WILDLIFE.

APPLICATION # R-81475

PERMIT # R-12146

DAM HEIGHT 11.0'

DAM LENGTH 400.0'

DAM HEIGHT Full Pool 7.7'

Reservoir Length 300.0'

Formula used:

$.4 \times 2.75 \times 7.7 = 8.47$  ACRE FEET