

RECEIVED

JUN 20 2002

WATER RESOURCES DEPT.
SALEM, OREGON

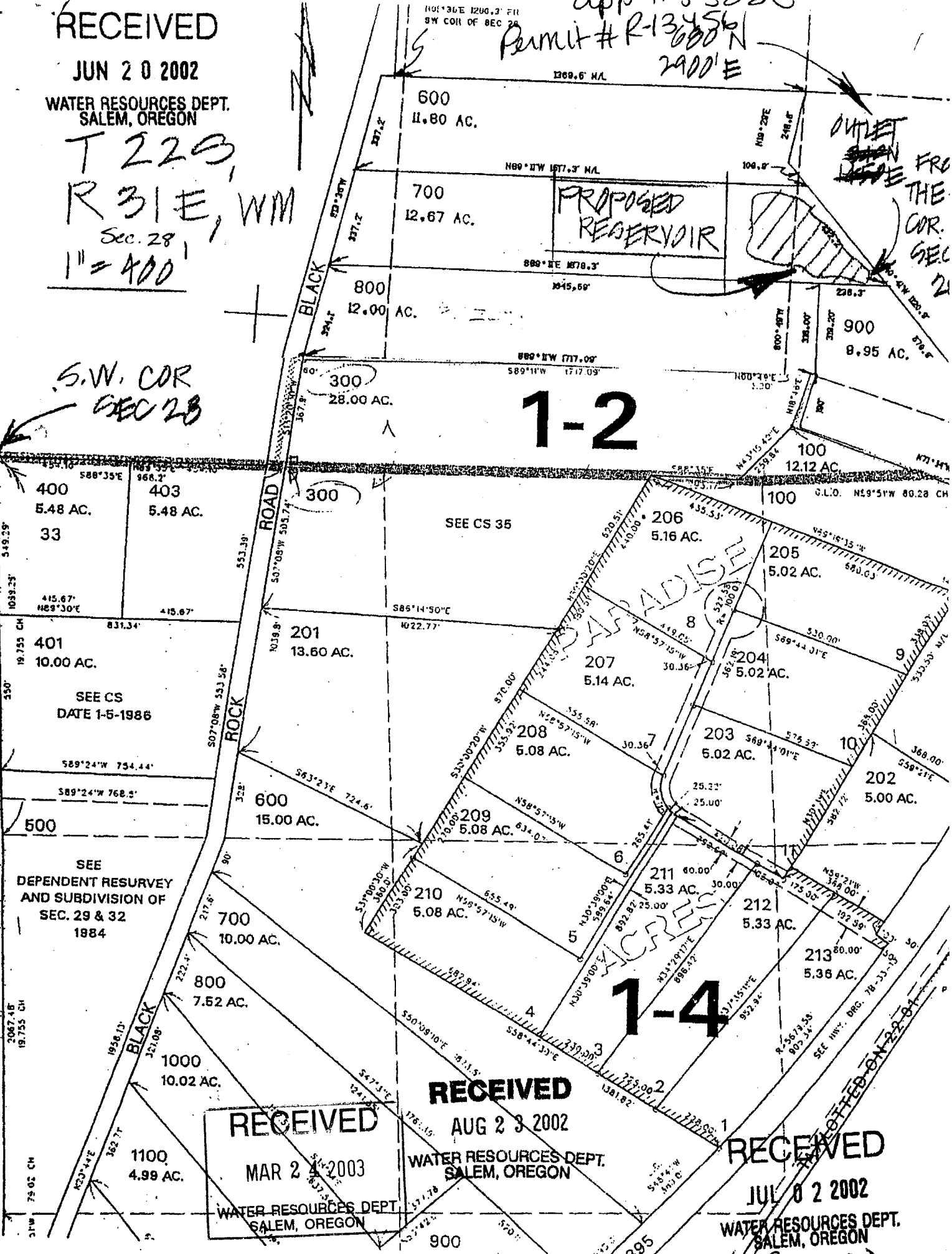
T 22S,
R 31E, WM
Sec. 28,
1" = 400'

app # 85220
Permit # R-13456
2000' E

S.W. COR
SEC 28

1-2

OUTLET
FROM
THE
COR.
SEC 28



RECEIVED

AUG 23 2002

WATER RESOURCES DEPT.
SALEM, OREGON

RECEIVED

MAR 24 2003

WATER RESOURCES DEPT.
SALEM, OREGON

RECEIVED

JUL 02 2002

WATER RESOURCES DEPT.
SALEM, OREGON

NOTED ON 2-2-04