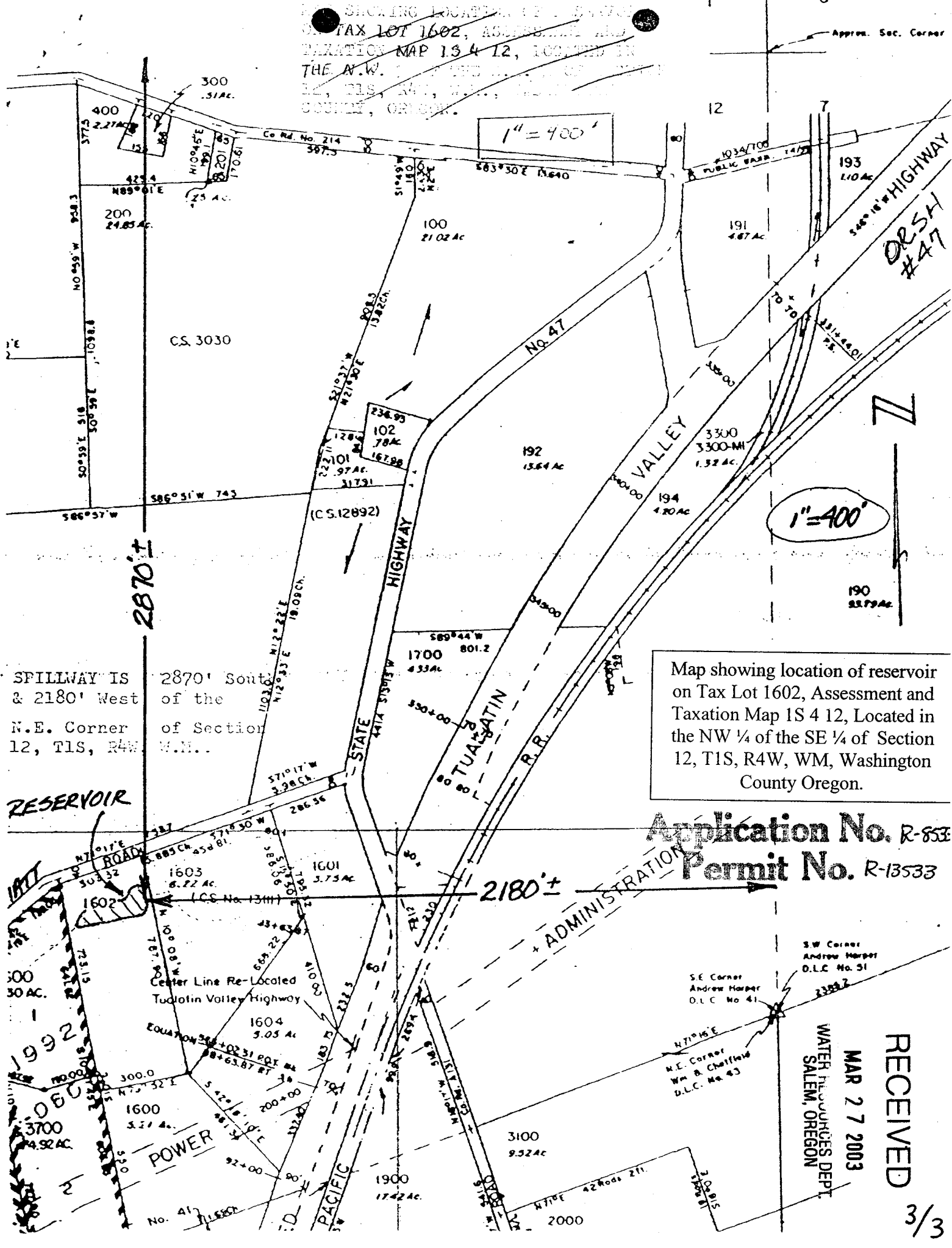


Map showing location of reservoir on Tax Lot 1602, Assessment and Taxation Map 1S 4 12, Located in the N.W. 1/4 of the SE 1/4 of Section 12, T1S, R4W, WM, Washington County, Oregon.



Map showing location of reservoir on Tax Lot 1602, Assessment and Taxation Map 1S 4 12, Located in the NW 1/4 of the SE 1/4 of Section 12, T1S, R4W, WM, Washington County Oregon.

Application No. R-853  
Permit No. R-13533

RECEIVED  
MAR 27 2003  
WATER RESOURCES DEPT.  
SALEM, OREGON