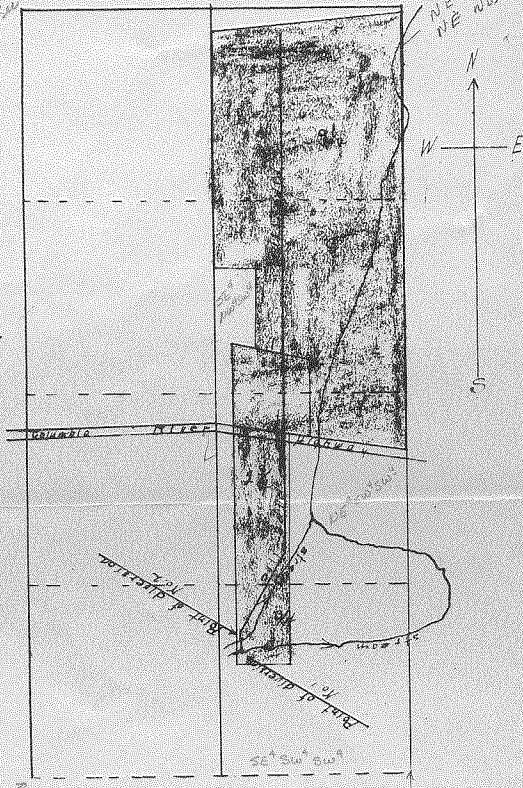


Flat showing-  
 the west half of the southwest quarter of Sec. 26, Twp. E N. R. 10 E W  
 Part in red represents land of Thomas Marshall, to be irrigated.  
 Solid black line shows location of pipe-line.  
 Two arrows indicate the two points of diversion on adjacent streams.

*Water Sec 26*

*NE NW SW  
 NE NW SW*



*SW 1/4 SW 1/4 SW 1/4*

Application No. 10378  
 Permit No. 6952