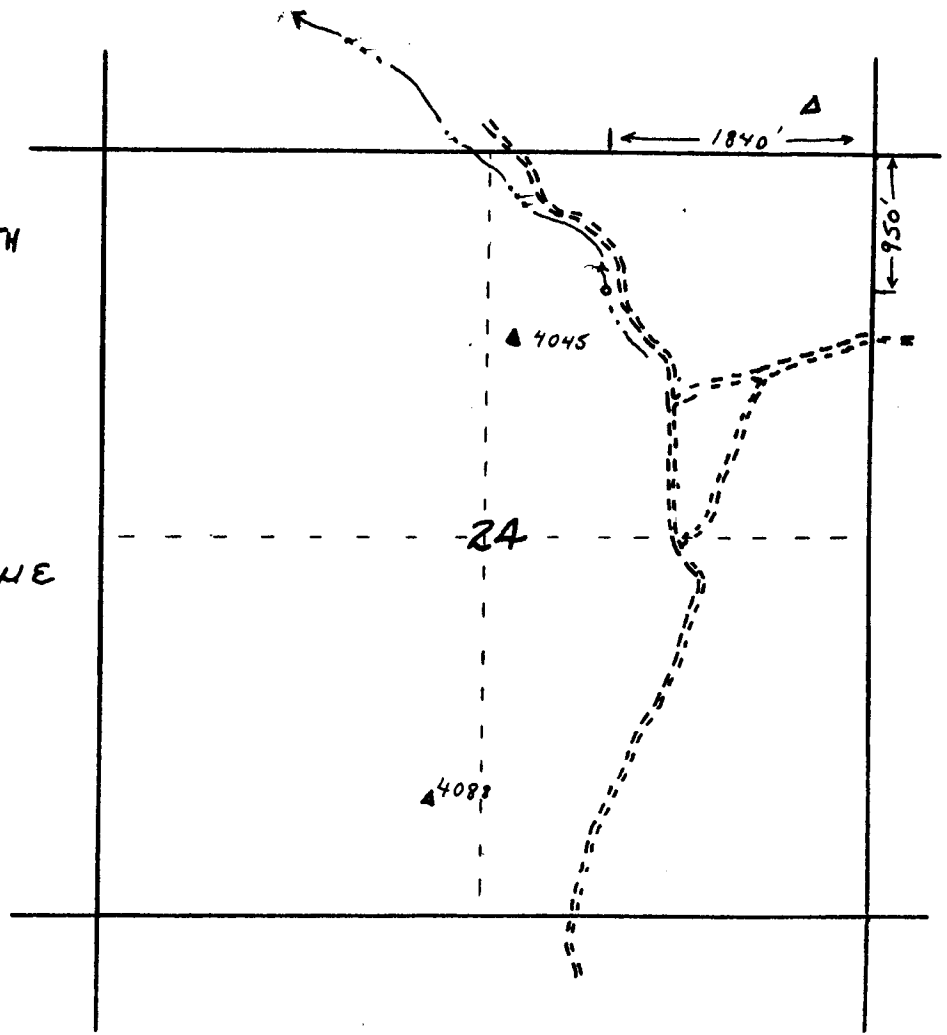


Kings Gap Spring
 T. 13 S., R. 13 E.,
 Section 24 NW, NE

SCALE
 4" = 1 mile



Application No. 66383
 Permit No. 52349

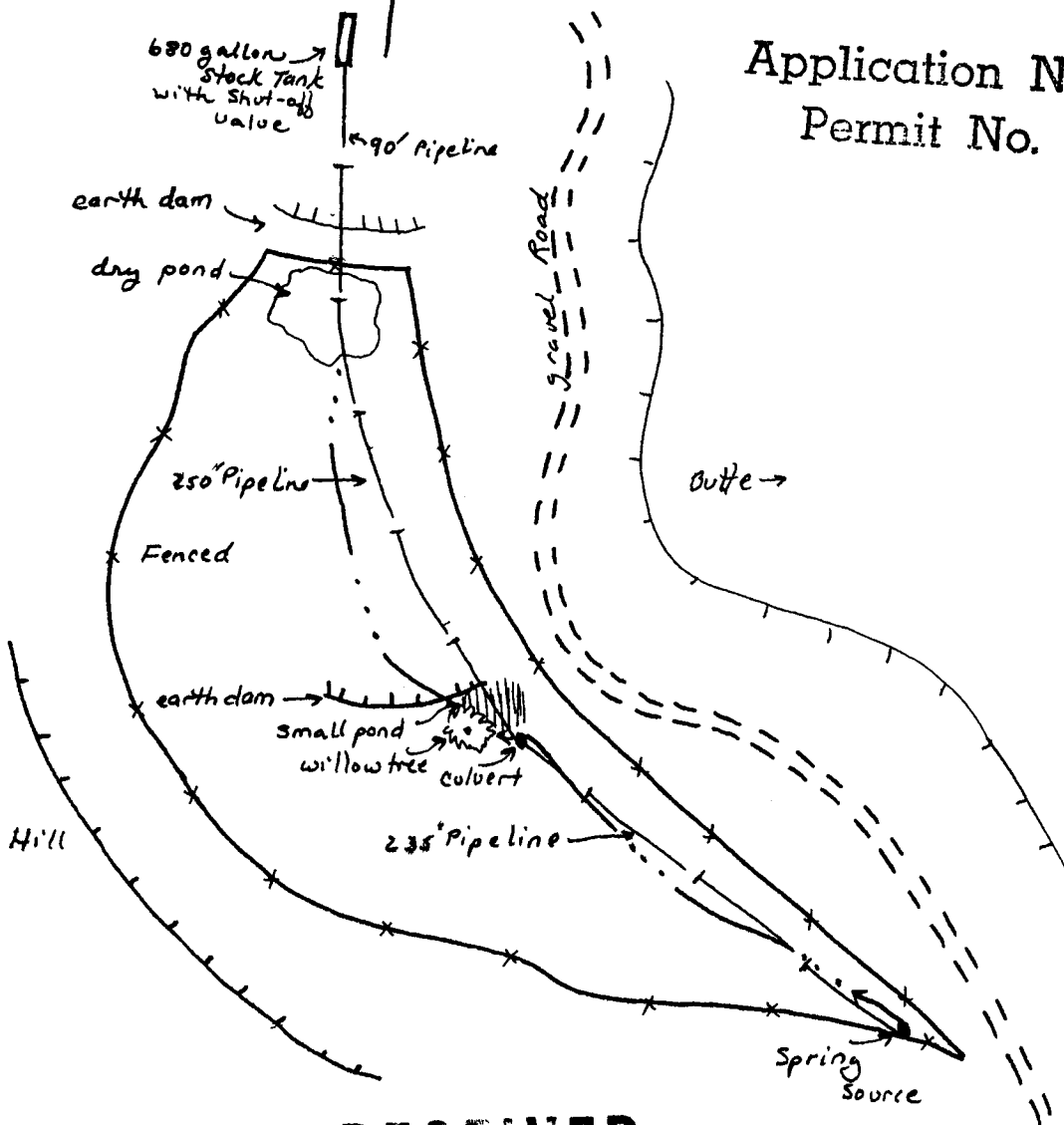
RECEIVED

SEP 19 1983
 WATER RESOURCES DEPT.
 SALEM, OREGON

Diagram of Kings Gap Spring
T. 13S., R. 13E., Sec 24, NW, NE

1 inch = 90 feet.

Application No. 66383
Permit No. 52349



RECEIVED

SEP 19 1983
WATER RESOURCES DEPT.
SALEM, OREGON

3265

3197

3411

3400

Upper
Cyrus Spring

Kings Gap Spring

T. 13 S., R. 13 E. Sec 24

NW 1/4, NE 1/4

Scale 4" = 1 Mile

NORTH ↑

18

3800

x 403

Cyrus Hill
Pond

1840

3800

Kings Gap
Spring

x 4045

Application No. 66383

Permit No. 58319

24

19

3524

3800

3800

x 4088

RECEIVED

SEP 19 1983

WATER RESOURCES DEPT.
SALEM, OREGON

3400

VABM
5108

Gray
Butte

Spring

3800

38