

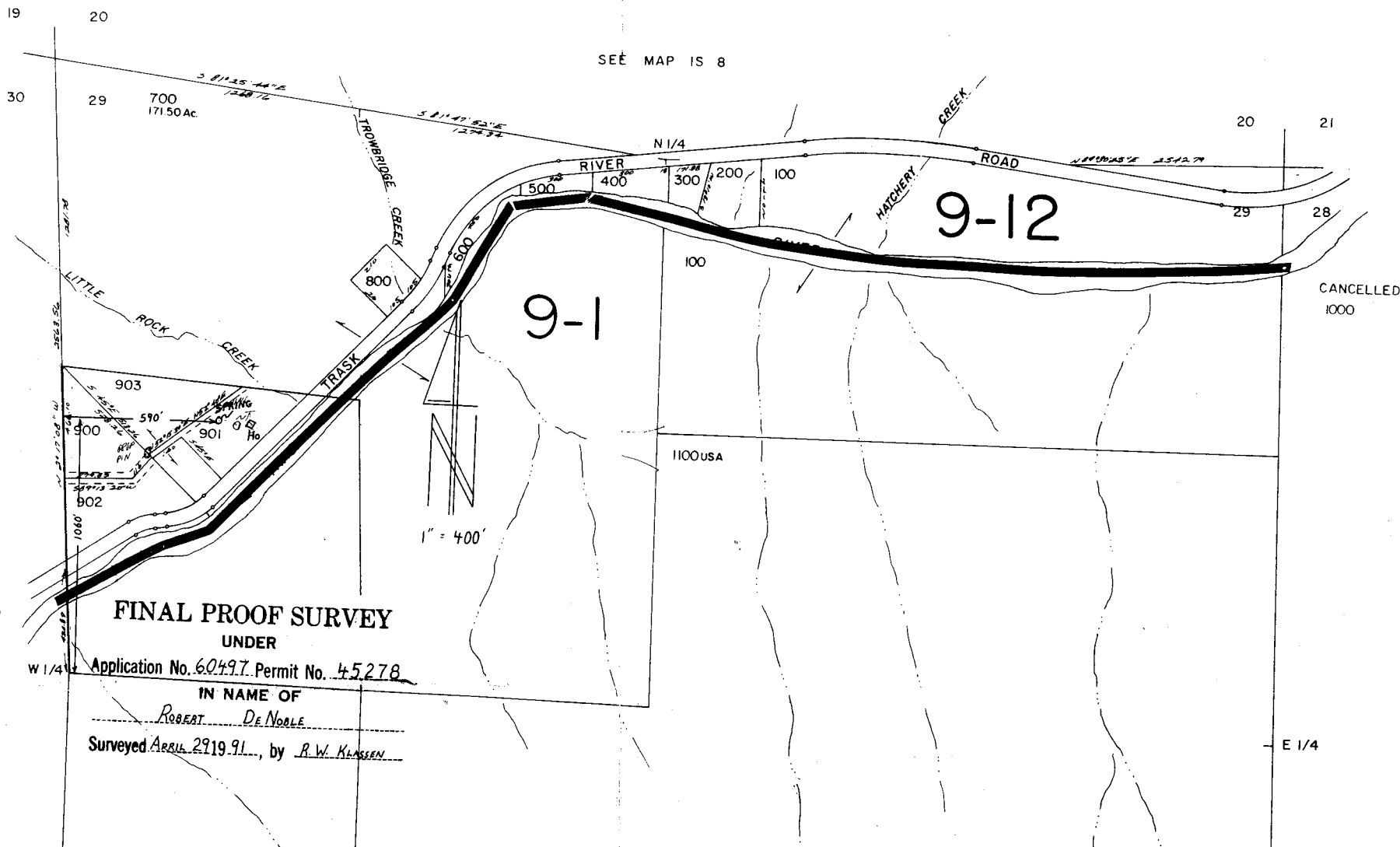
SECTION 29 T.1S. R.8W. W.M.  
TILLAMOOK COUNTY

IS 8 29

This map was prepared for  
assessment purpose only

1" = 400'

SEE MAP IS 8



FINAL PROOF SURVEY  
UNDER

Application No. 60497 Permit No. 45278

IN NAME OF

ROBERT DE NOBLE

Surveyed APRIL 29 1991, by R.W. KLASSEN

SEE MAP IS 8

SEE MAP IS 8