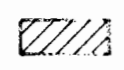
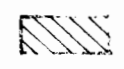
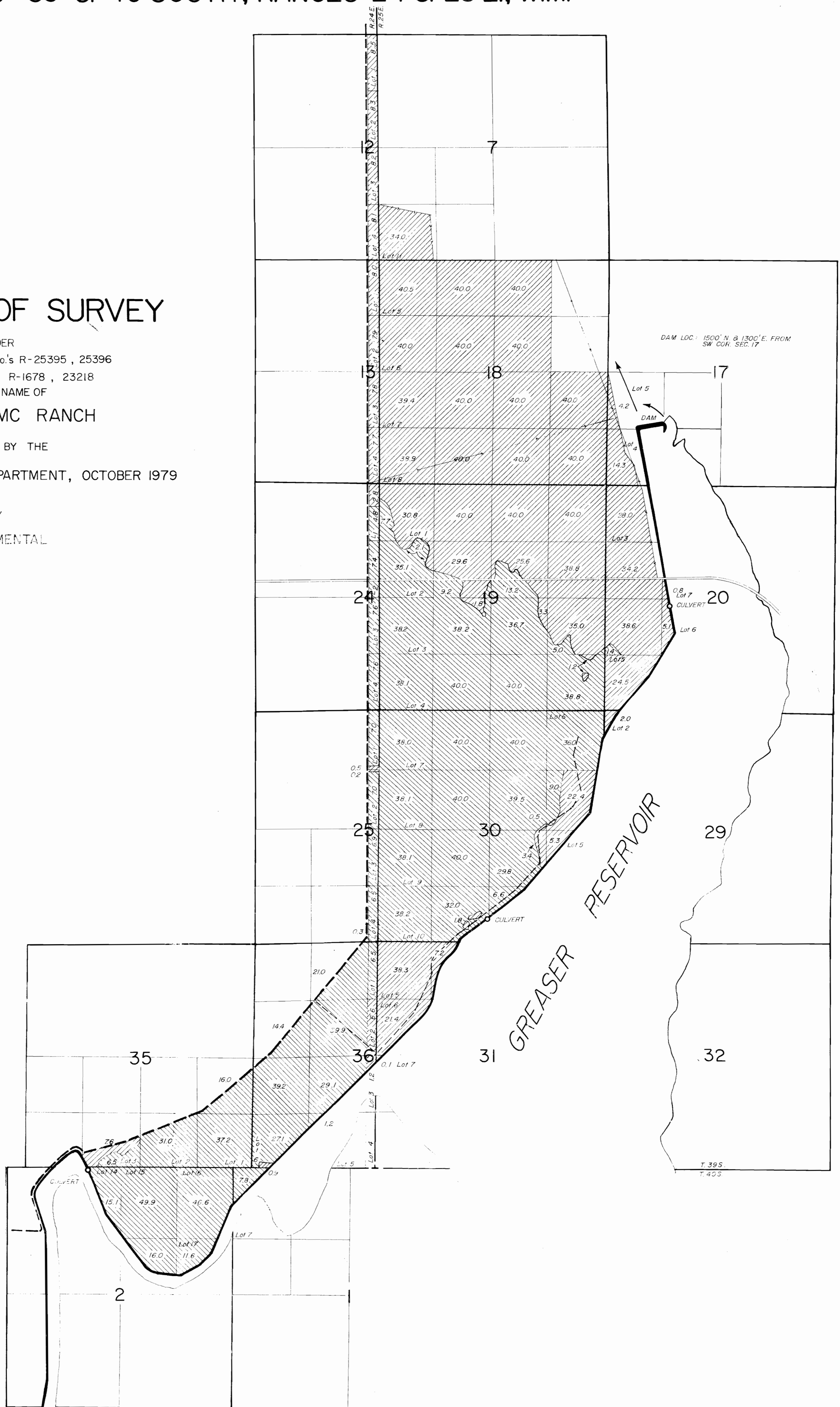


FINAL PROOF SURVEY

UNDER
Application No.'s R-25395, 25396
Permit No.'s R-1678, 23218
IN THE NAME OF
WOLFSEN MC RANCH
SURVEYED BY THE
WATER RESOURCES DEPARTMENT, OCTOBER 1979




 PRIMARY
 SUPPLEMENTAL

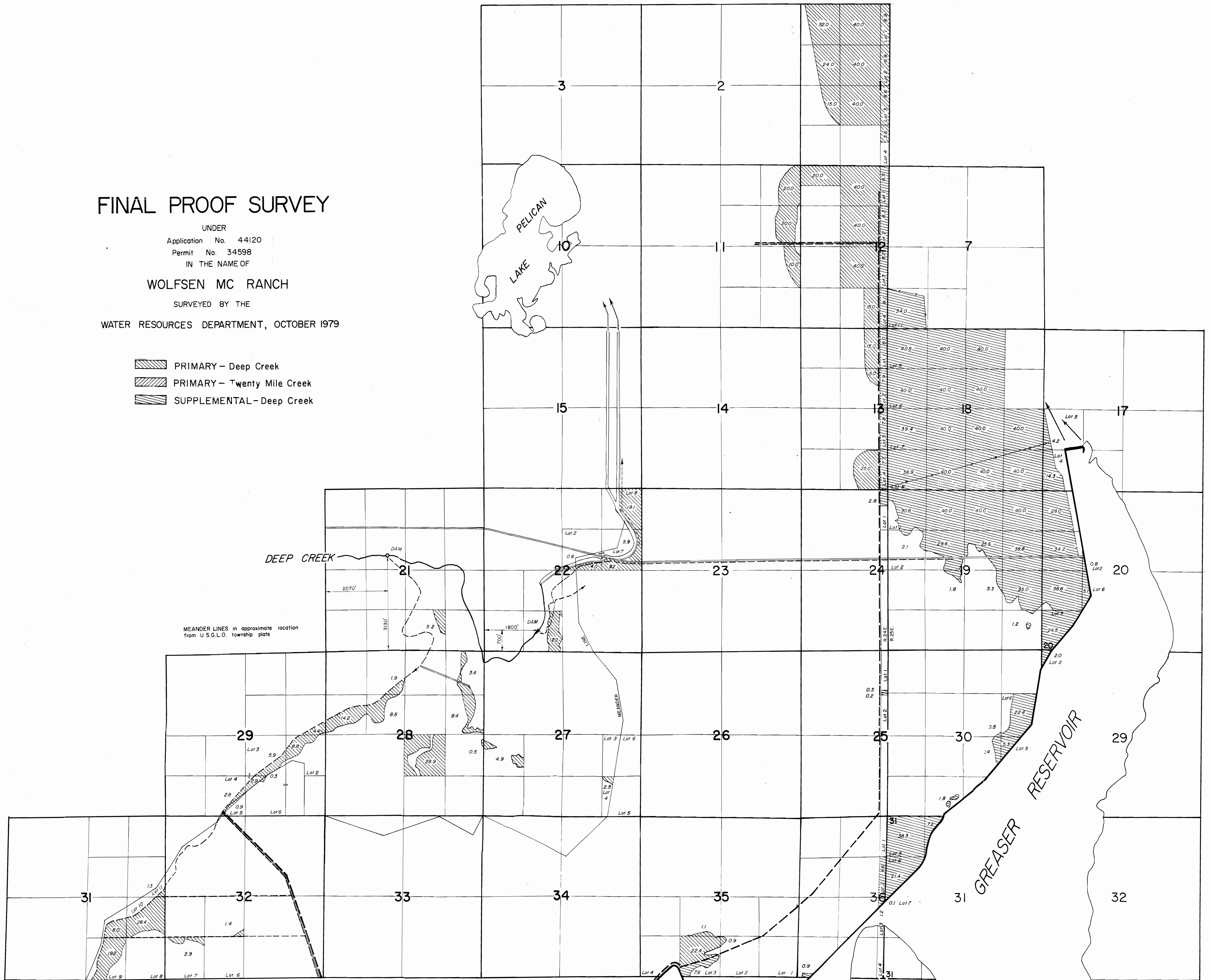


TOWNSHIP 39 SOUTH, RANGES 24 & 25 EAST, W.M.

FINAL PROOF SURVEY

UNDER
 Application No. 44120
 Permit No. 34598
 IN THE NAME OF
WOLFSEN MC RANCH
 SURVEYED BY THE
 WATER RESOURCES DEPARTMENT, OCTOBER 1979

-  PRIMARY - Deep Creek
-  PRIMARY - Twenty Mile Creek
-  SUPPLEMENTAL - Deep Creek




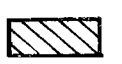
MEANDER LINES in approximate location
 from U.S.G.L.O. township plats

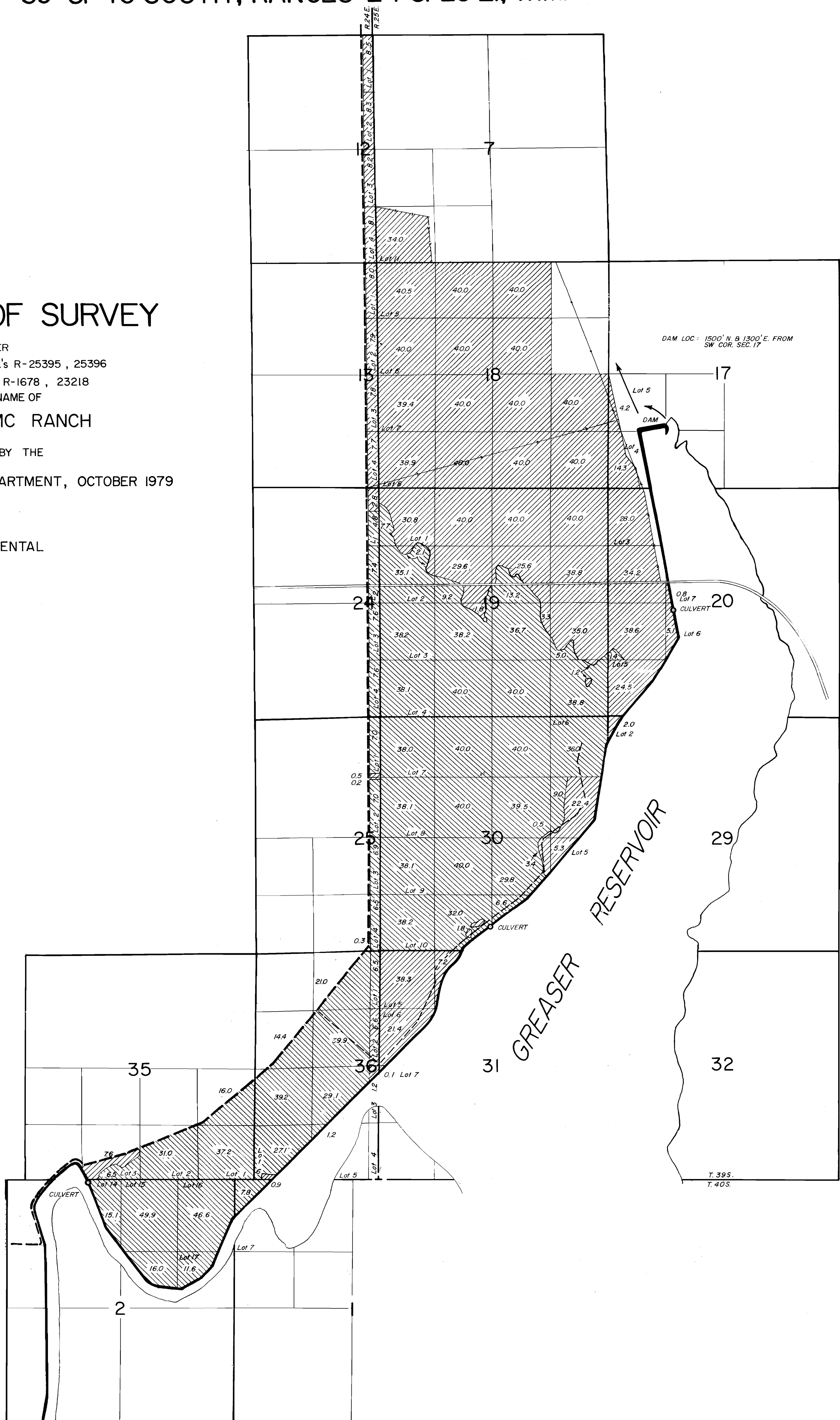
SEE SHEET #2

TOWNSHIPS 39 & 40 SOUTH, RANGES 24 & 25 E., W.M.

FINAL PROOF SURVEY

UNDER
Application No.'s R-25395, 25396
Permit No.'s R-1678, 23218
IN THE NAME OF
WOLFSEN MC RANCH
SURVEYED BY THE
WATER RESOURCES DEPARTMENT, OCTOBER 1979

-  PRIMARY
-  SUPPLEMENTAL



MB

TOWNSHIP 40 SOUTH, RANGES 23 & 24 EAST, W.M.

SEE SHEET # 1

