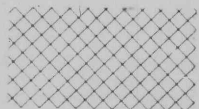


APP 39197

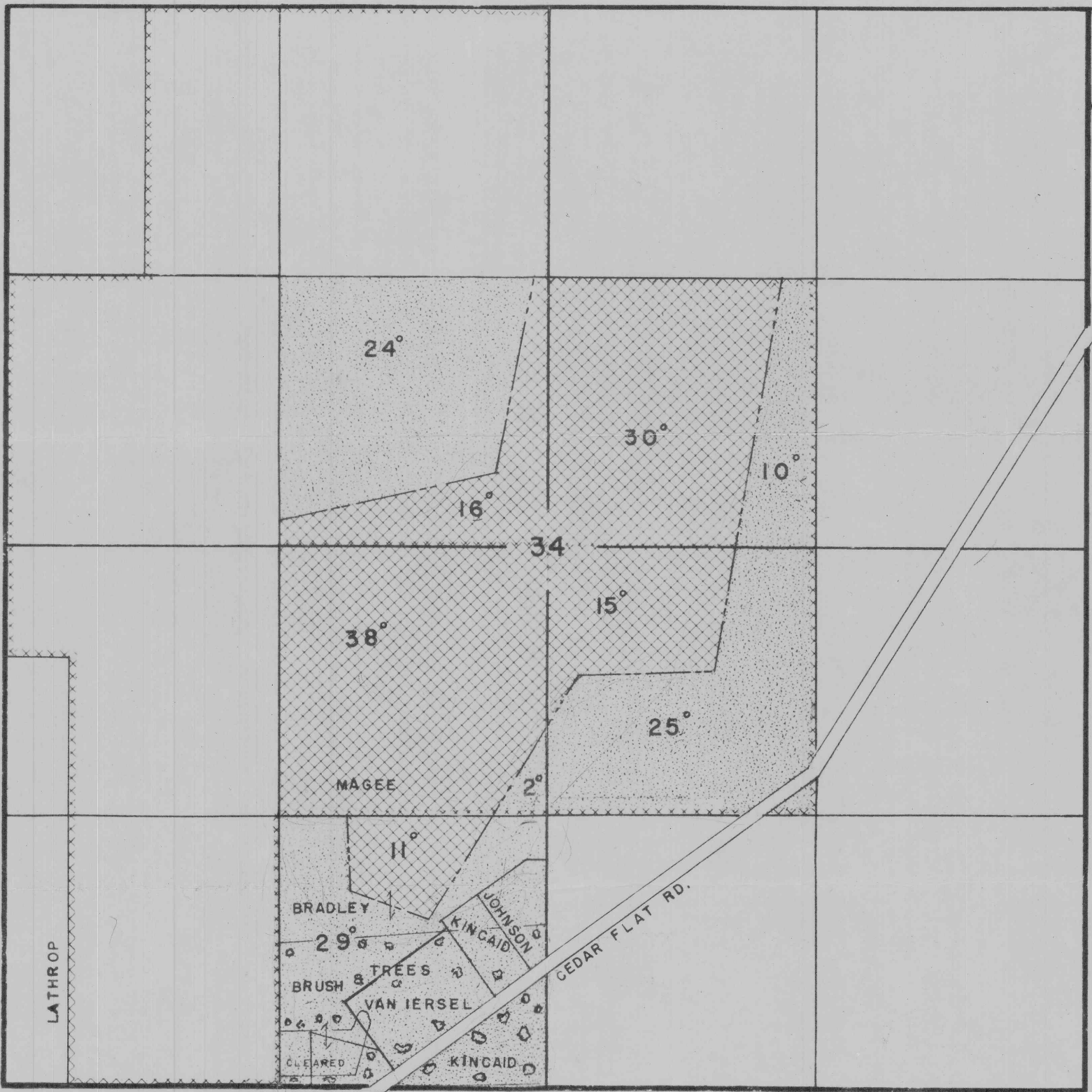
# TOWNSHIP 38 S. RANGE 5 W. W. M.



**RR DECREE, 1862, MUNGER CREEK**  
H.O. & E.M. Norton Cert 76352 1.84 cts Irr & stock Stites Ditch  
S/L to C.M. STITES & Est. of W.C. Stites



**MUNGER CREEK - 1916** <sup>Permit #</sup> 2938  
Cert 3362 H.O. & C.M. Norton May 25, 1916 1.13 cts  
Munger Cr. supplemented by water from John or Mule Gulch, Marble Gulch & China Gulch



SCALE = 8" = 1 MILE  
FEB. 7. 1964

**RECEIVED**  
FEB 24 1964  
STATE ENGINEER  
SALEM, OREGON