

T. 3 N., R. 30 E., W. M.

G-5335
54559

19

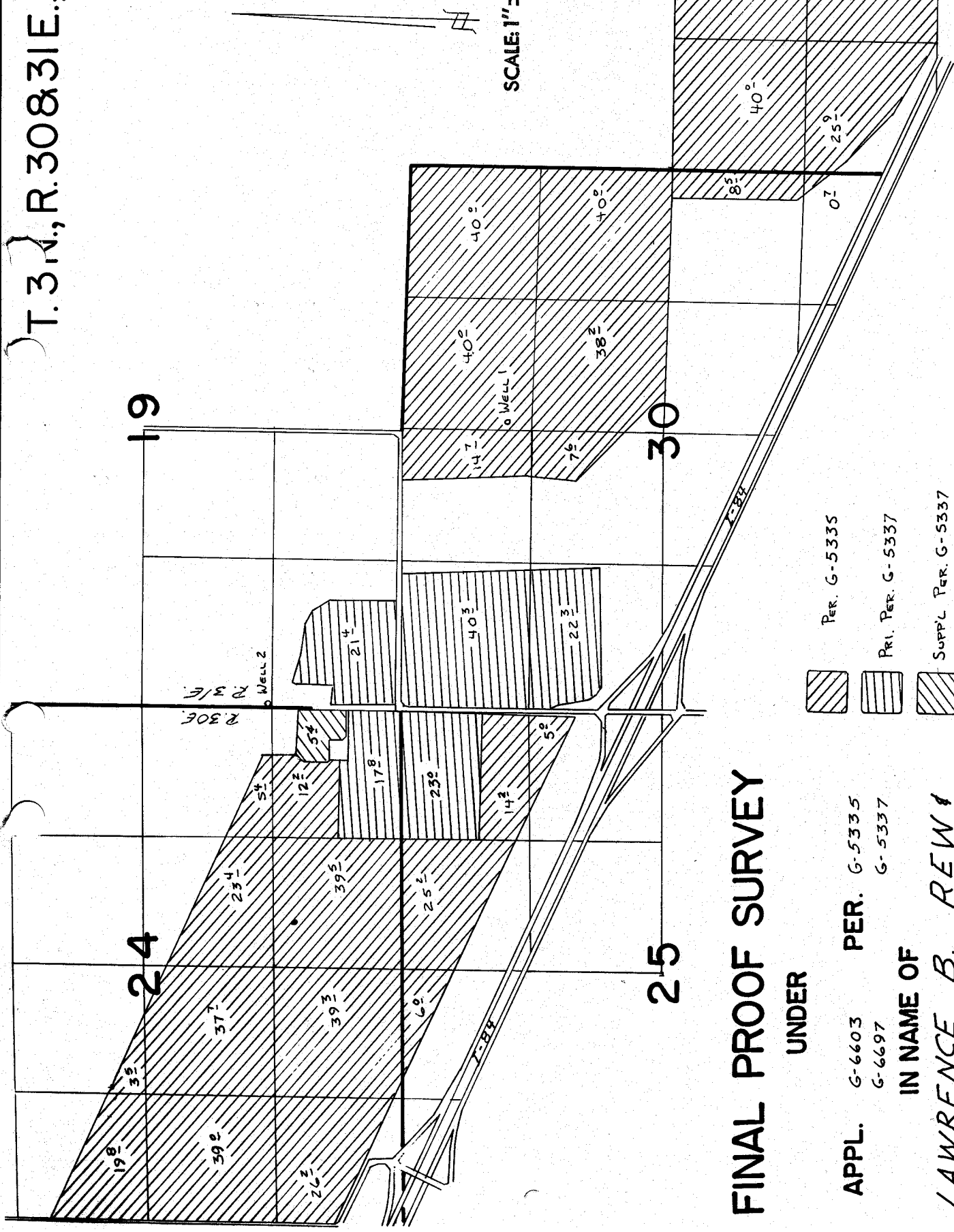
24




30

25

29

SCALE: 1" = 1320'



-  PER. G-5335
-  PRI. PER. G-5337
-  SUPPL. PER. G-5337

FINAL PROOF SURVEY

UNDER

APPL. G-6603 PER. G-5335
G-6697 G-5337

IN NAME OF
**LAWRENCE B. REW &
REW RANCHES, INC.**

WELL 1 LOCATED 1070' S. & 90' E. FROM N 1/4 COR. SEC 30 T. 3 N., R. 31 E.

SURVEYED NOVEMBER 28, 1977 BY R. BARWIN