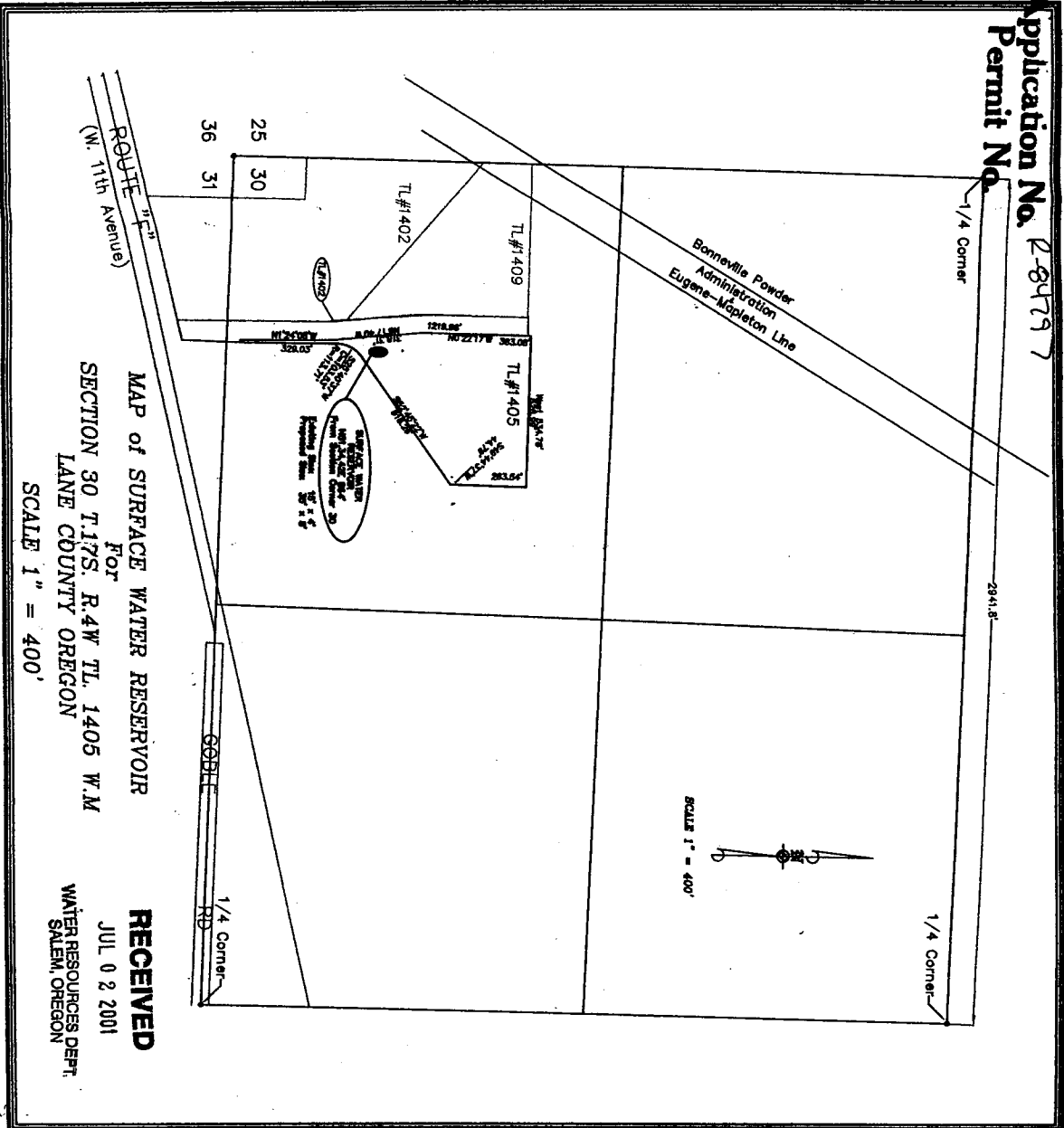


Application No. 284797
Permit No.

RECEIVED
AUG 29 2003
WATER RESOURCES DEPT.
SALEM, OREGON



MAP OF SURFACE WATER RESERVOIR
FOR
SECTION 30 T.17S. R.4W TL. 1405 W.M
LANE COUNTY OREGON
SCALE 1" = 400'

RECEIVED
JUL 02 2001
WATER RESOURCES DEPT.
SALEM, OREGON

V:\Traffic\DEAN\W_11th_MAPS\17043000.dwg, 06/06/2001 02:17:56 PM