

TOWNSHIP 36 S RANGE 1 E

MEDFORD IRRIGATION DISTRICT PERMITS

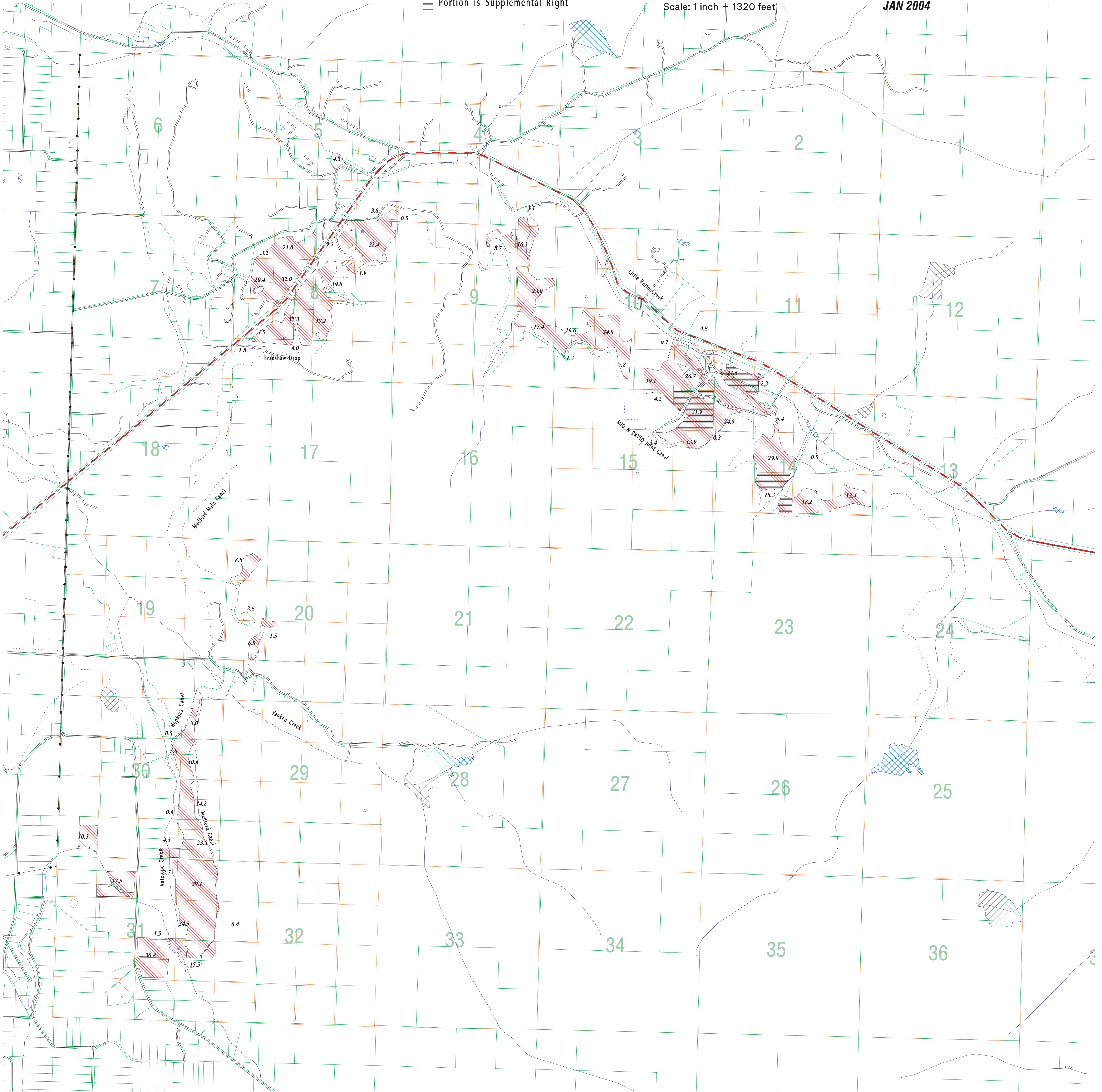
■ E 19 AND S 407

■ Portion is Supplemental Right

FINAL



JAN 2004

Scale: 1 inch = 1320 feet



TOWNSHIP 36 S RANGE 1 W

MEDFORD IRRIGATION DISTRICT PERMITS

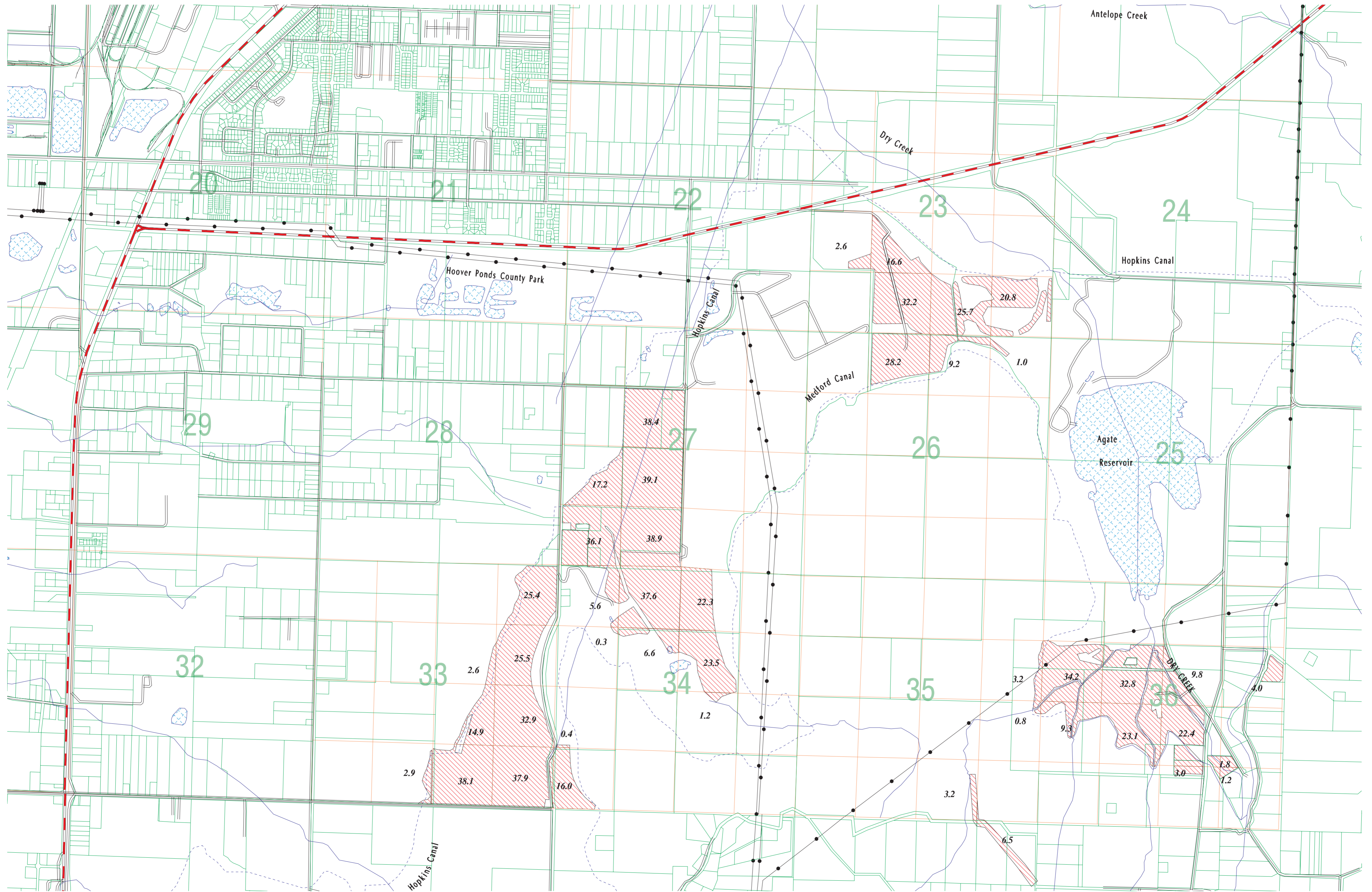
-  E 19 AND S 407
-  Portion is Supplemental Right



FINAL

Scale: 1 Inch = 1320 Feet

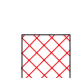
JAN 2004



TOWNSHIP 37 S RANGE 1 W

MEDFORD IRRIGATION DISTRICT PERMITS

 E 19 AND S 407

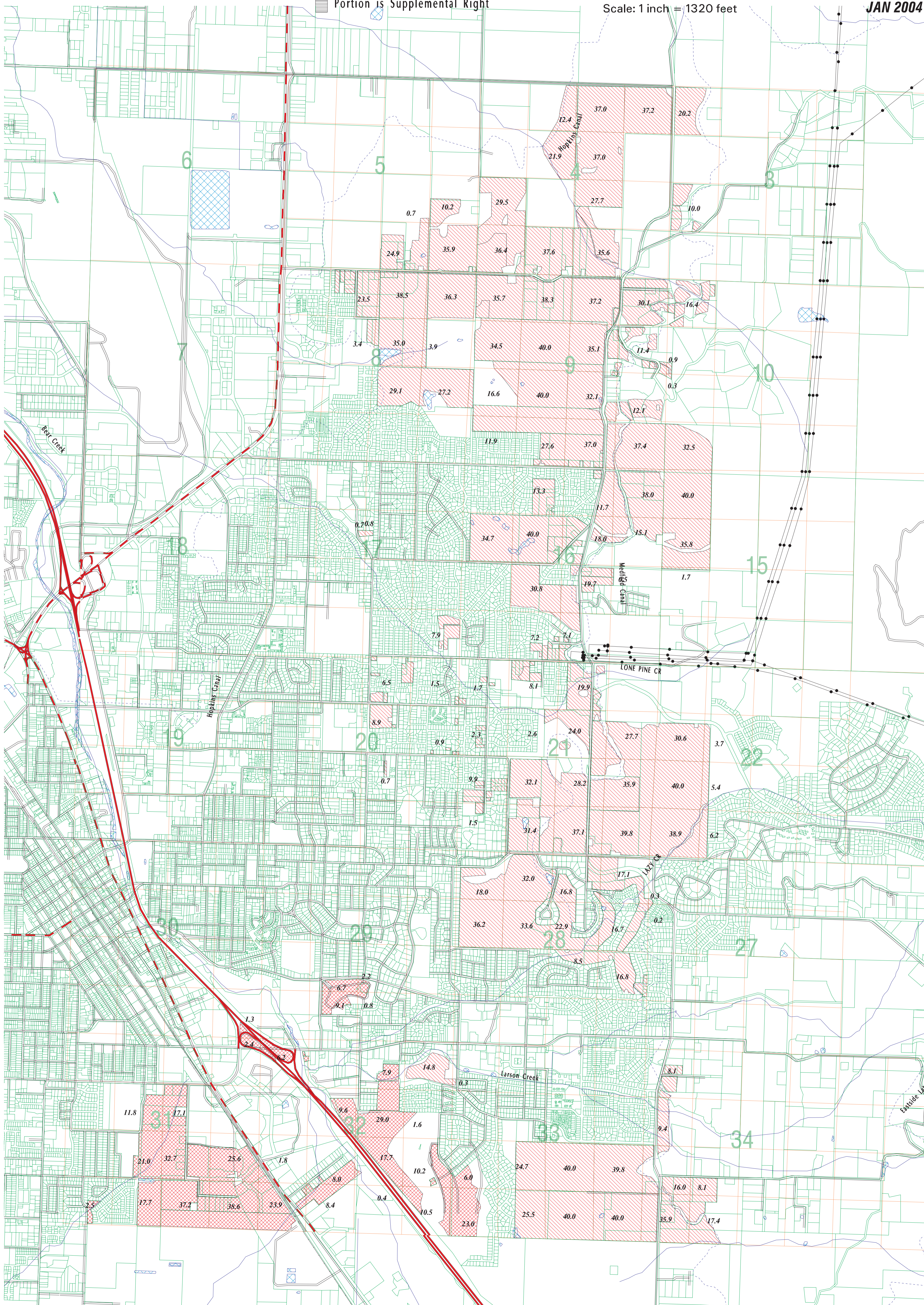
 and S 2382 - Bear Creek

 Portion is Supplemental Right

Scale: 1 inch = 1320 feet



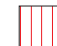
FINAL

JAN 2004



TOWNSHIP 38 S RANGE 1 W

MEDFORD IRRIGATION DISTRICT PERMITS

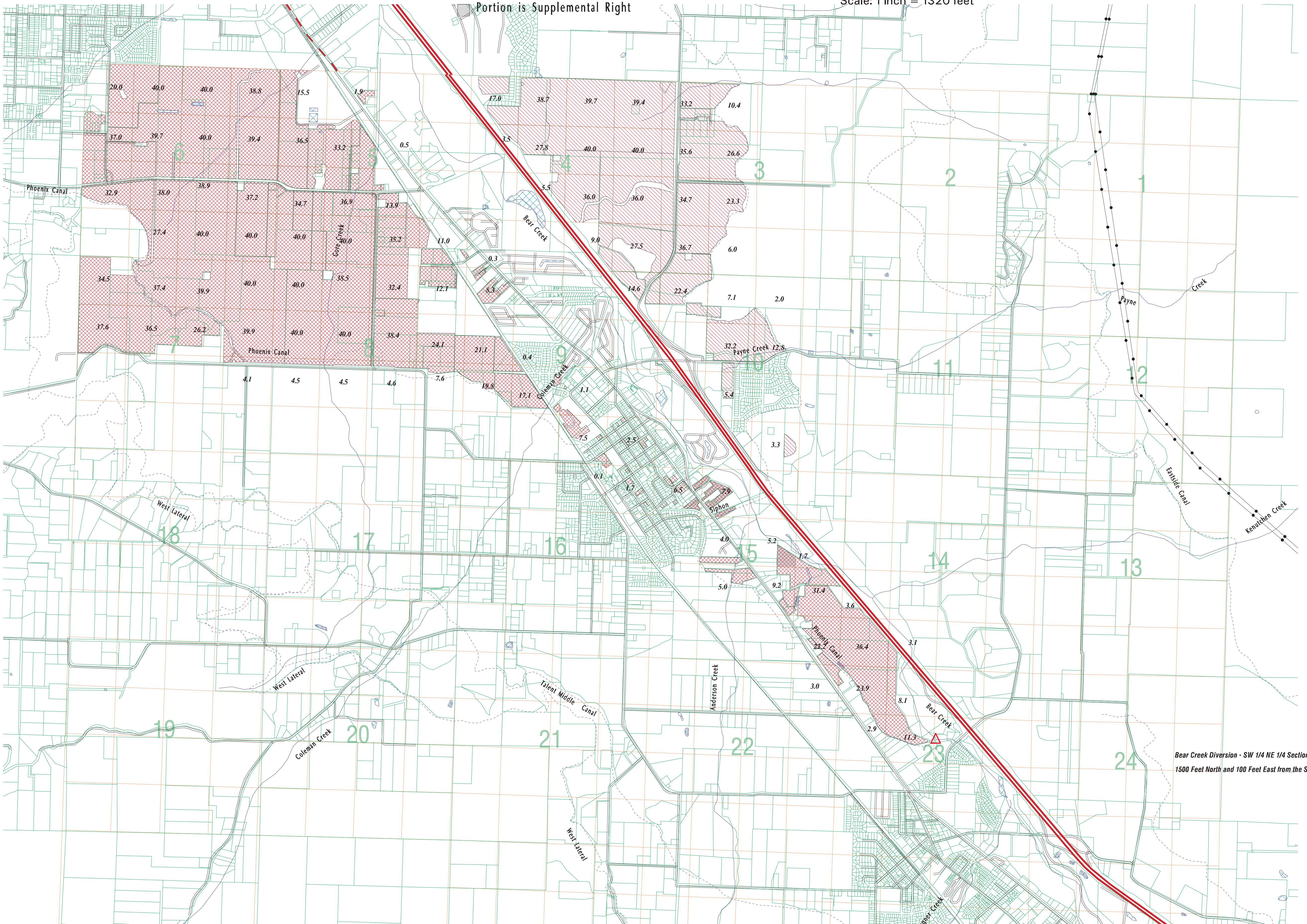
-  E 19 and S 407
-  and S 2382 - Bear Creek
- 

FINAL

JAN 2004

Scale: 1 inch = 1320 feet

Portion is Supplemental Right



Bear Creek Diversion - SW 1/4 NE 1/4 Section 23
1500 Feet North and 100 Feet East from the SE Corner of DLC 59

TOWNSHIPS 37 & 38 SOUTH RANGE 2 WEST W.M.

MEDFORD IRRIGATION DISTRICT PERMITS

■ E 19, S 407, and S 2382

▨ Ponds

■ Portion is Supplemental Right

Scale: 1 inch = 1320 feet

FINAL

JAN 2004

