

# TOWNSHIP 36 S RANGES 1 W & 1 E

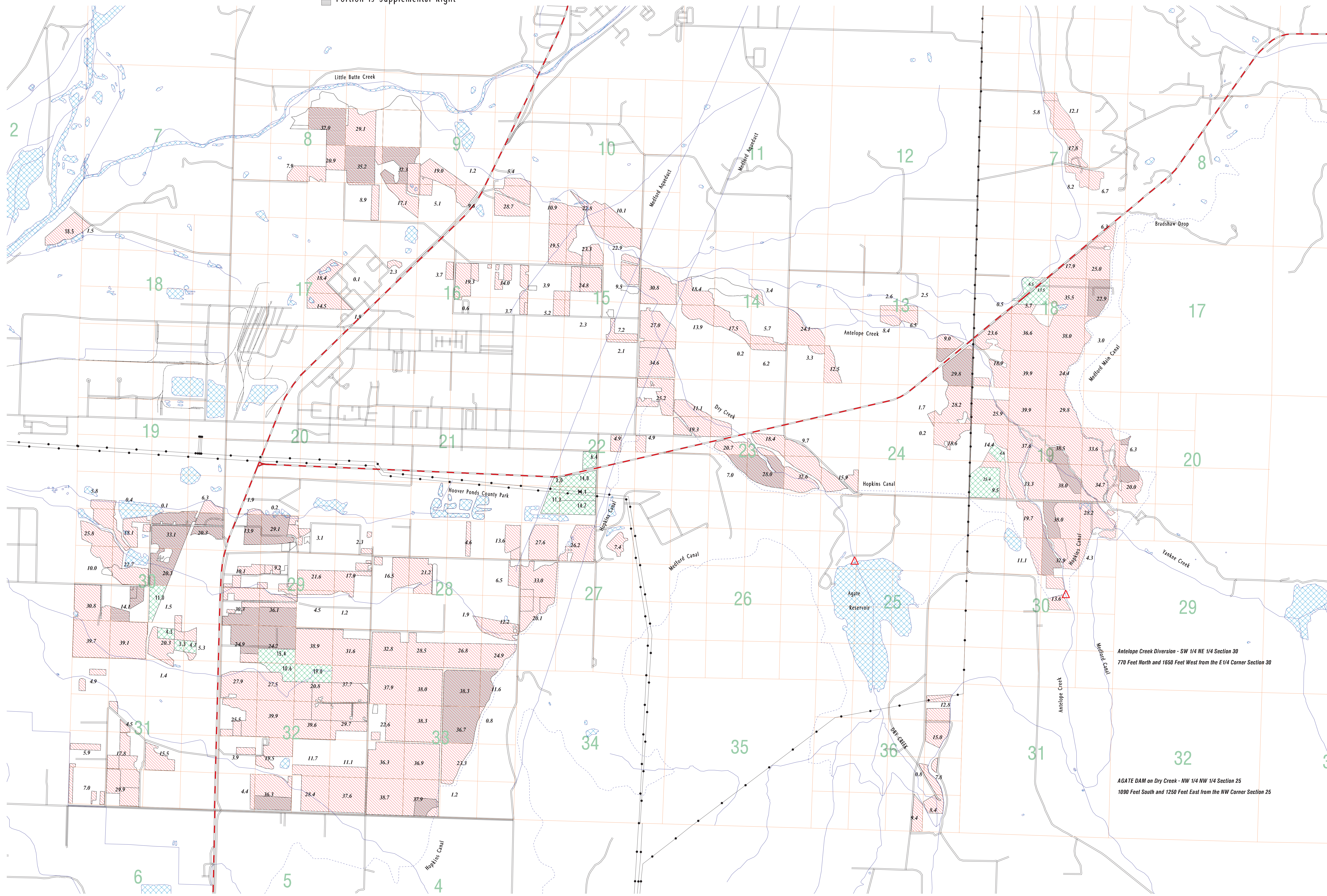
## ROGUE RIVER VALLEY IRRIGATION DISTRICT PERMITS

- E 19, S 407, 1705, 30364 and 38230
- R 4563 and R 6175 - Agate Reservoir
- Transfer H-134 - N & S Fks Little Butte Cr
- Portion is Supplemental Right

Scale: 1 inch = 1320 feet

**FINAL**

JAN 2004



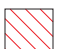


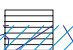
Antelope Creek Diversion - SW 1/4 NE 1/4 Section 30  
770 Feet North and 1650 Feet West from the E 1/4 Corner Section 30

AGATE DAM on Dry Creek - NW 1/4 NW 1/4 Section 25  
1090 Feet South and 1250 Feet East from the NW Corner Section 25



# TOWNSHIP 36 S RANGE 2 W

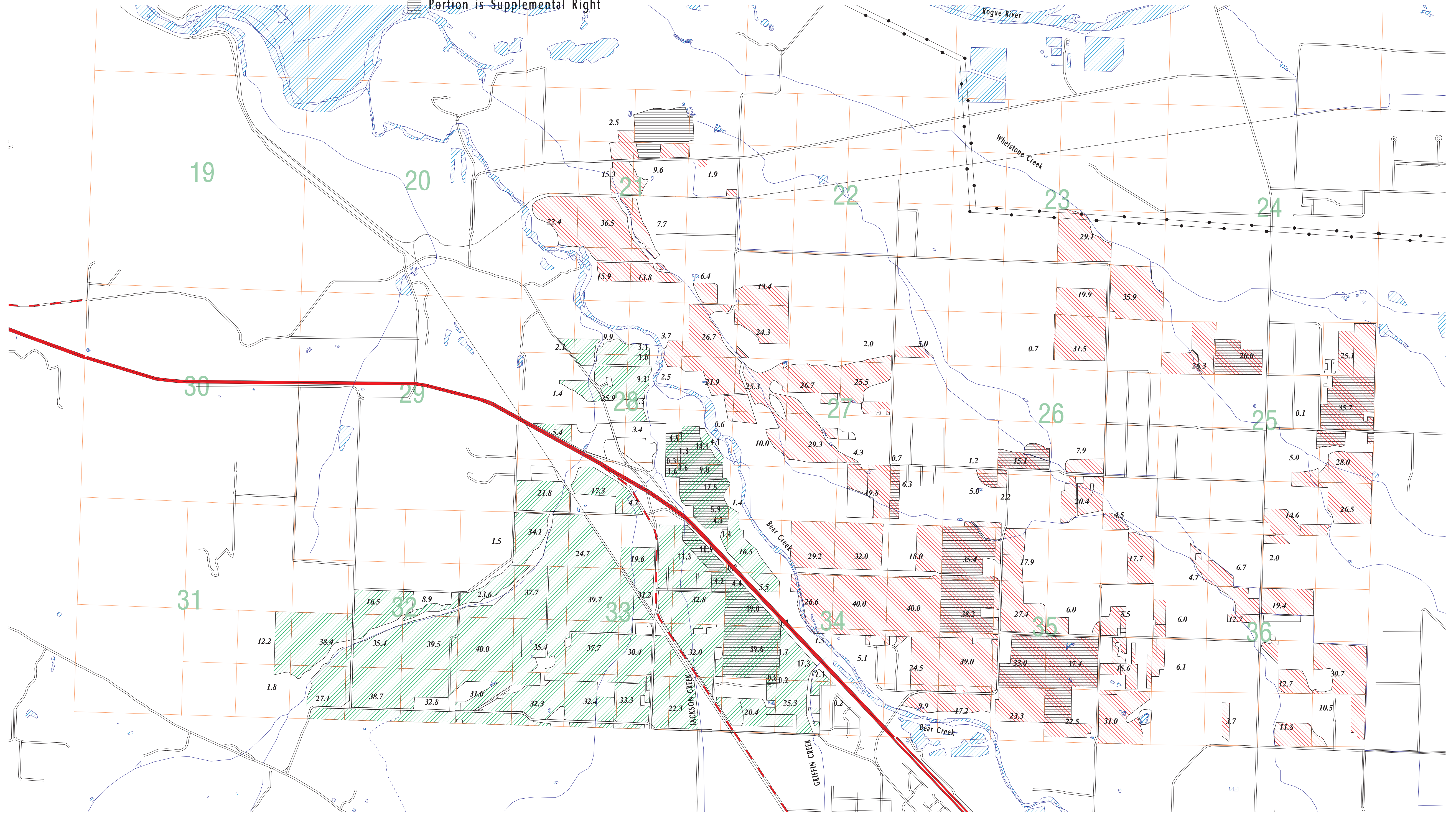
## ROGUE RIVER VALLEY IRRIGATION DISTRICT PERMITS

-  E 19, S 407, 1705, 30364 AND 38230
-  and S 1706 - Bear Creek, and S 2993 - Jackson and Griffin Creeks
-  Transfer H-134 - N & S Fks Little Butte Cr
-  Portion is Supplemental Right

**FINAL**

**JAN 2004**

Scale: 1 inch = 1320 feet









# TOWNSHIP 37 S RANGE 2 W

## ROGUE RIVER VALLEY IRRIGATION DISTRICT PERMITS

19, S 407, 1705, 30364 and 38230

Also includes S 1706 - Bear Creek

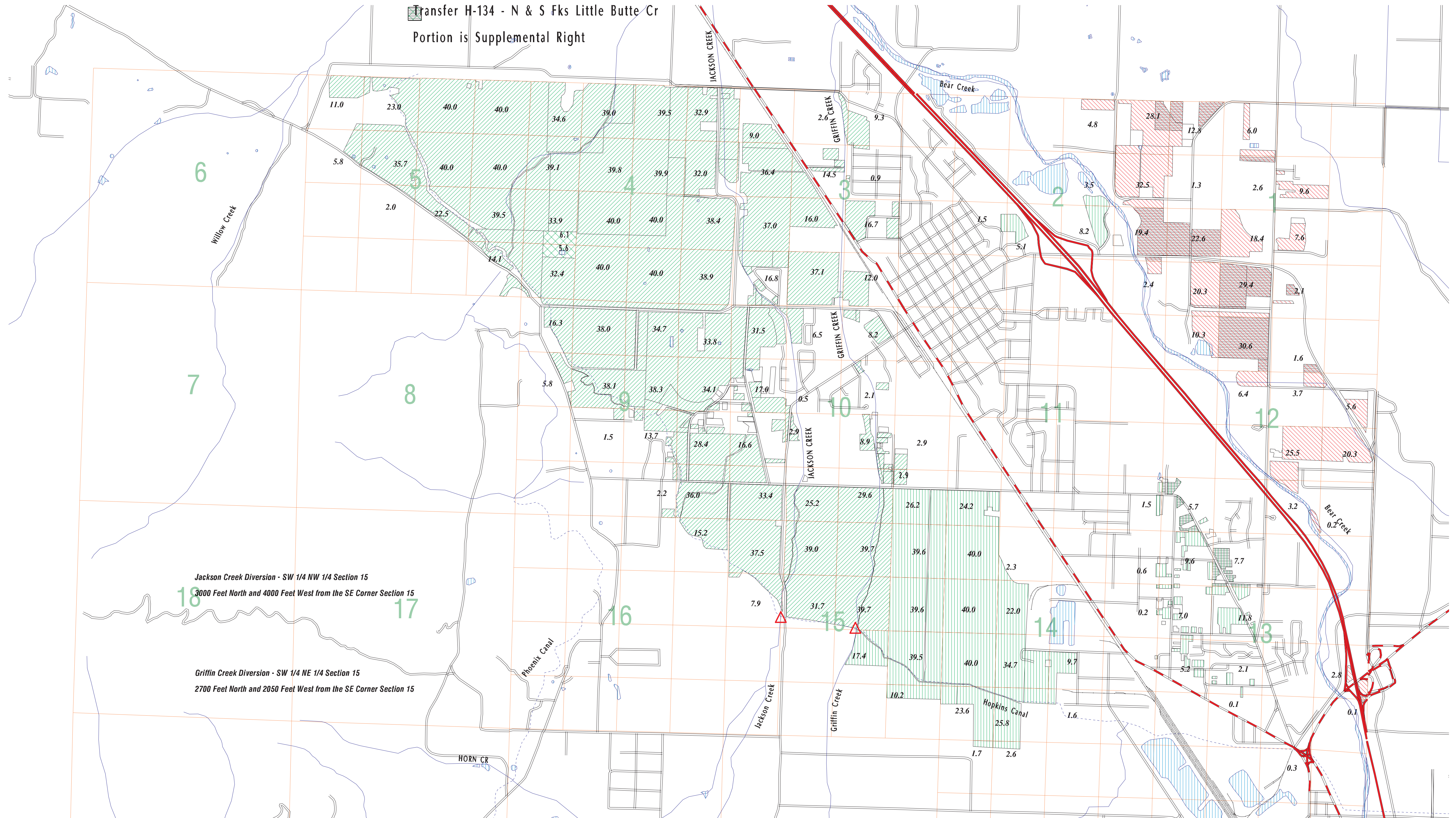
Also includes S 2993 - Jackson and Griffin Creeks

Transfer H-134 - N & S Fks Little Butte Cr  
Portion is Supplemental Right

**FINAL**

**JAN 2004**

Scale: 1 inch = 1320 feet



Jackson Creek Diversion - SW 1/4 NW 1/4 Section 15  
3000 Feet North and 4000 Feet West from the SE Corner Section 15

Griffin Creek Diversion - SW 1/4 NE 1/4 Section 15  
2700 Feet North and 2050 Feet West from the SE Corner Section 15