

27

TOWNSHIP 36 S, RANGE 11 E, W. M.

R-12924
80588

FEB 28 2004

North

RECEIVED

DEC 10 2001

WATER RESOURCES DEPT.
SALEM, OREGON

27

26

#3400

#3300

#500

968'

468'

#1

#2

#3

843'

118'

1405'

Brass Marker
1968

South

CODY ROBERT HOFFMAN

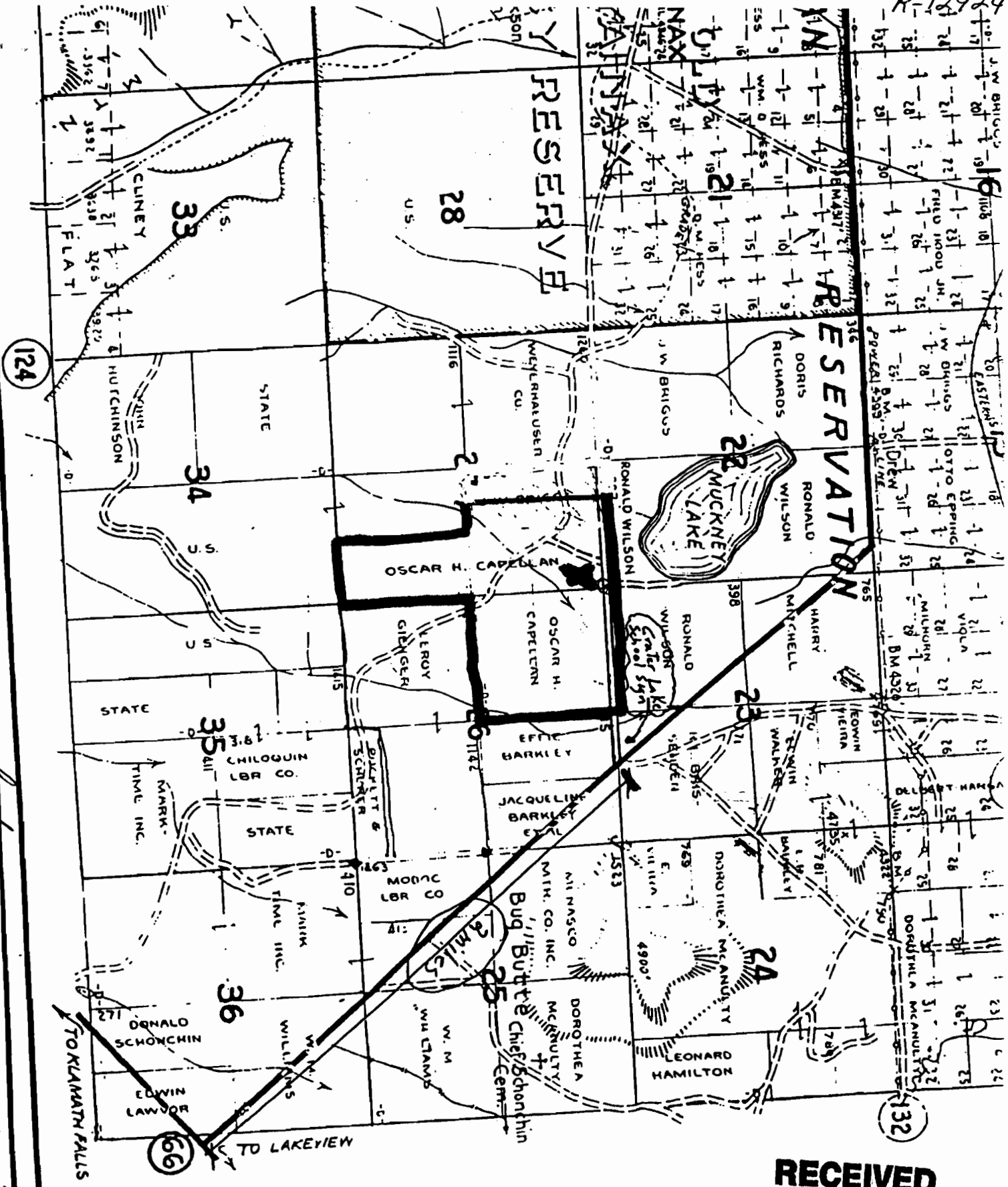
HIGH SERENITY RANCH

3/1/2000

APPLICATION No.

PERMIT No.

R-12924



Approved by Mrs. [illegible]

RECEIVED

MAR 9 2000

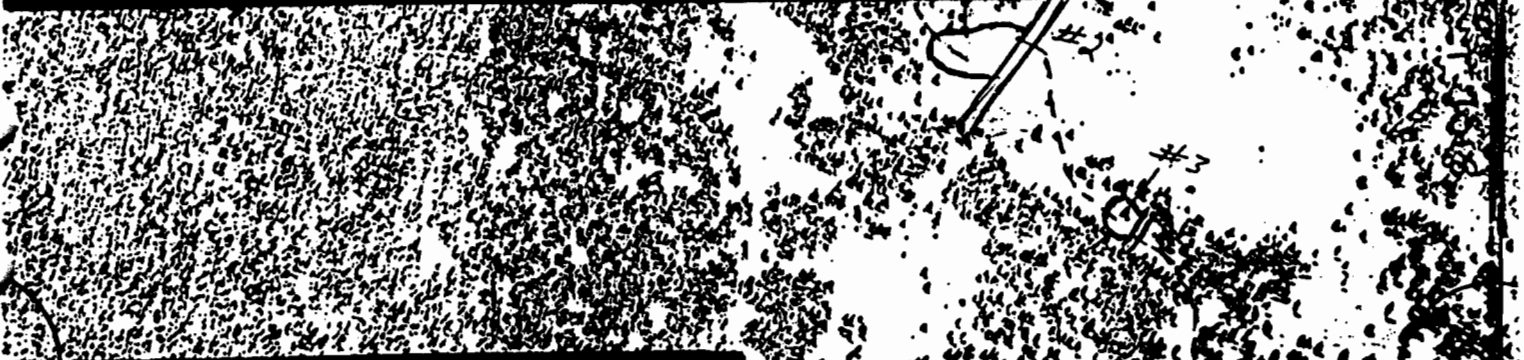
WATER RESOURCES DEPT.
SALEM, OREGON

Application No. R-84368
Permit No. R-12924

- L
- PAVED ROAD
- STATE HWY
- IMPROVED
- DIRT ROAD
- INFERIOR R
- RAILROADS
- TRAILS
- INTERMITT
- SCHOOLS

R-12924

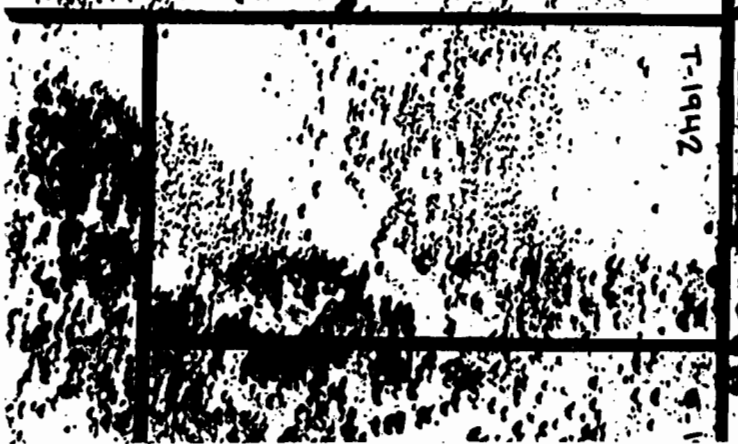
Sprague Riv. Misc.



R-84368
RECEIVED
R-12924
MAR 9 2000

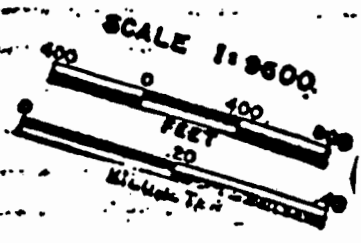
T-1944

WATER RESOURCES DEPT.
SALEM, OREGON

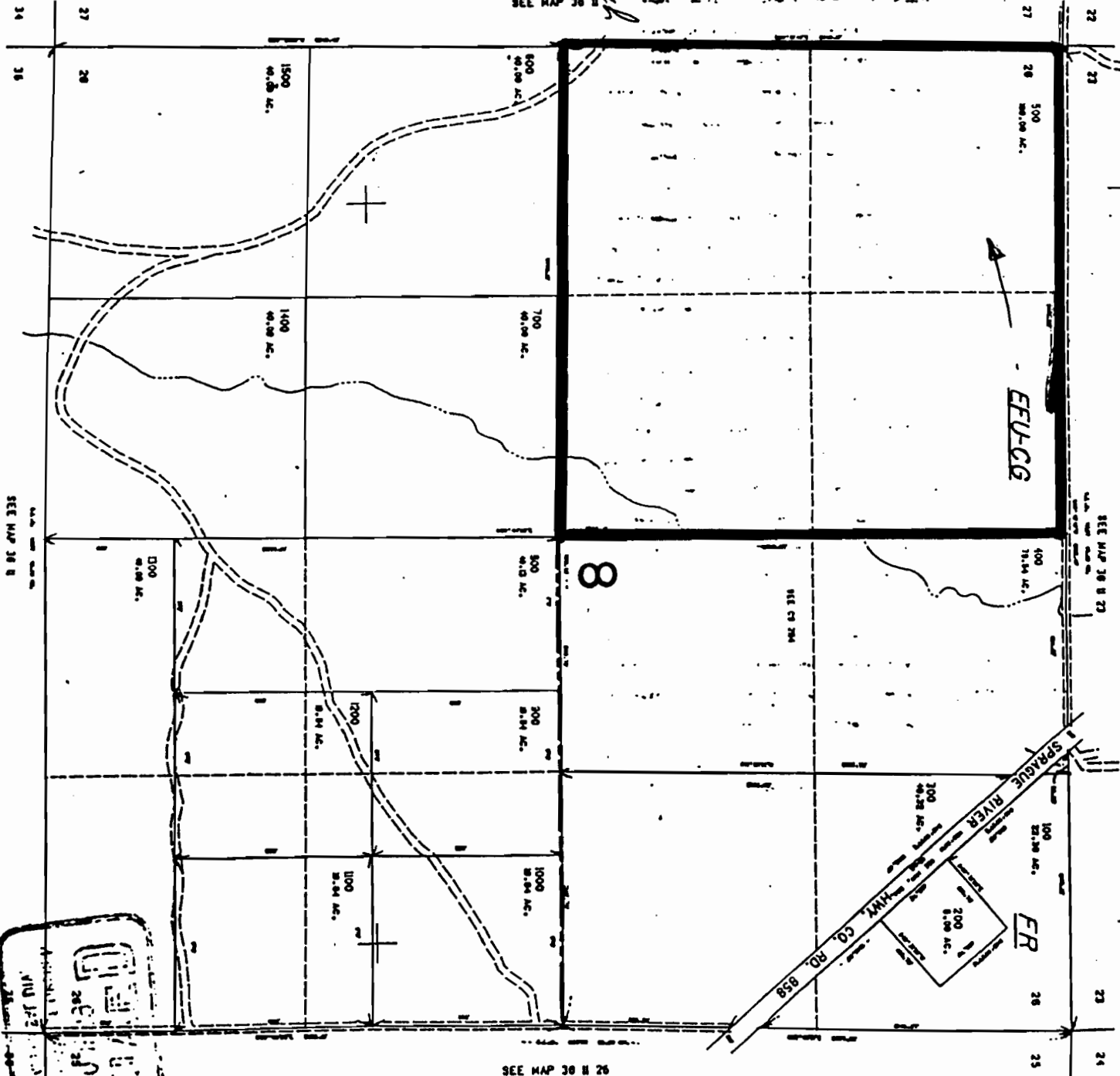


T-1942

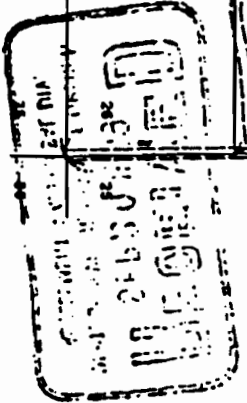
T-1940



Part of the reach
where the river
off causes also
of erosion of
top soil.



Sprague Riv. Meas.



Application No. R-84368
Permit No. R-12924

RECEIVED
MAR 9 2000
WATER RESOURCES DEPT.
SALEM, OREGON

R-12924

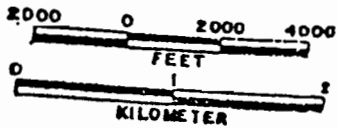
Application No. R-87368
Permit No. R-12924

RECEIVED

MAR 9 2000

WATER RESOURCES DEPT.
SALEM, OREGON

SCALE 1:48000



FEB 5 1997

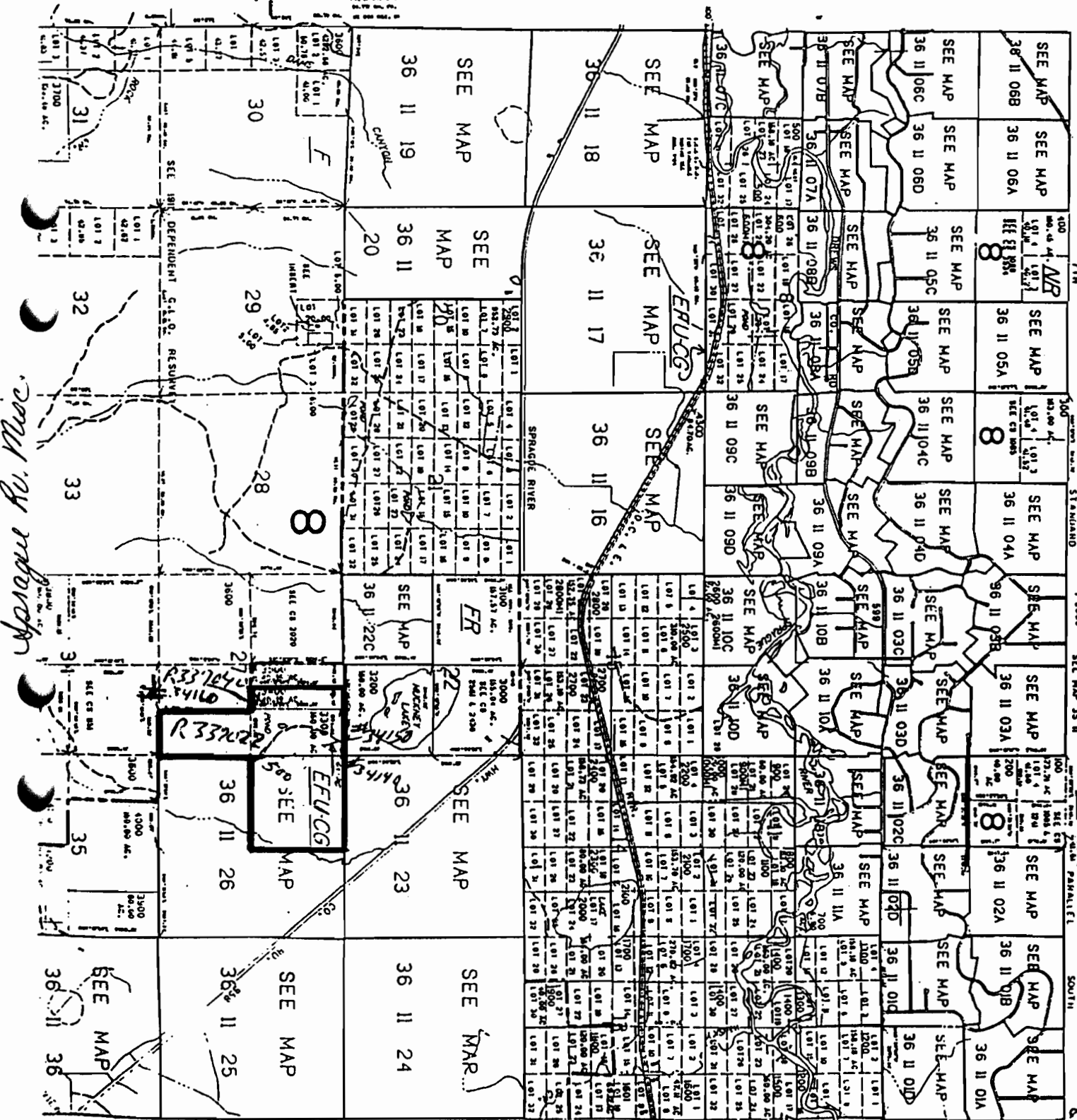
THIS MAP WAS PREPARED FOR ASSESSMENT PURPOSE ONLY.

KLAMATH COUNTY

SECTION 8

SOUTH

INDEX



Spague Rv. Misc

R33222
R33244

SEE MAP 36 12

SEE MAP 36 10