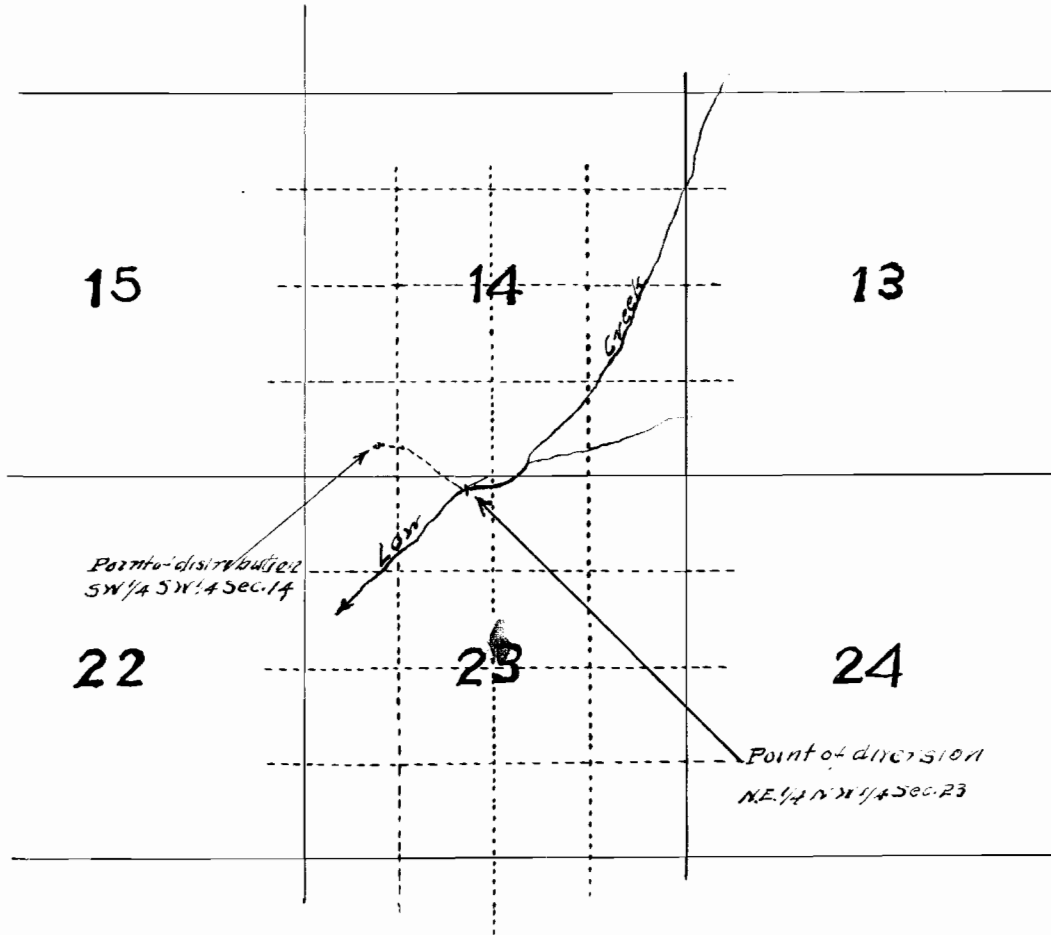


T.28S. R.14W.



CERTIFICATE OF SURVEYOR

I, A.E. Hadzall, of Coos County Oregon, do hereby certify that this map was made from notes taken during an actual survey made by me on August 14, 1923 and it correctly represents the works described in the accompanying application together with the location of streams and other ditches in the immediate vicinity

A.E. Hadzall
Surveyor

6012