



# T. 3S. R1E., W.M.

THOMAS L. THOMSEN

NE 1/4 NW 1/4 SW 1/4 SECTION 30, T3S, R1E, WM

P.O.U. - PLACE OF IRRIGATION USE  
WATER USE ACREAGE

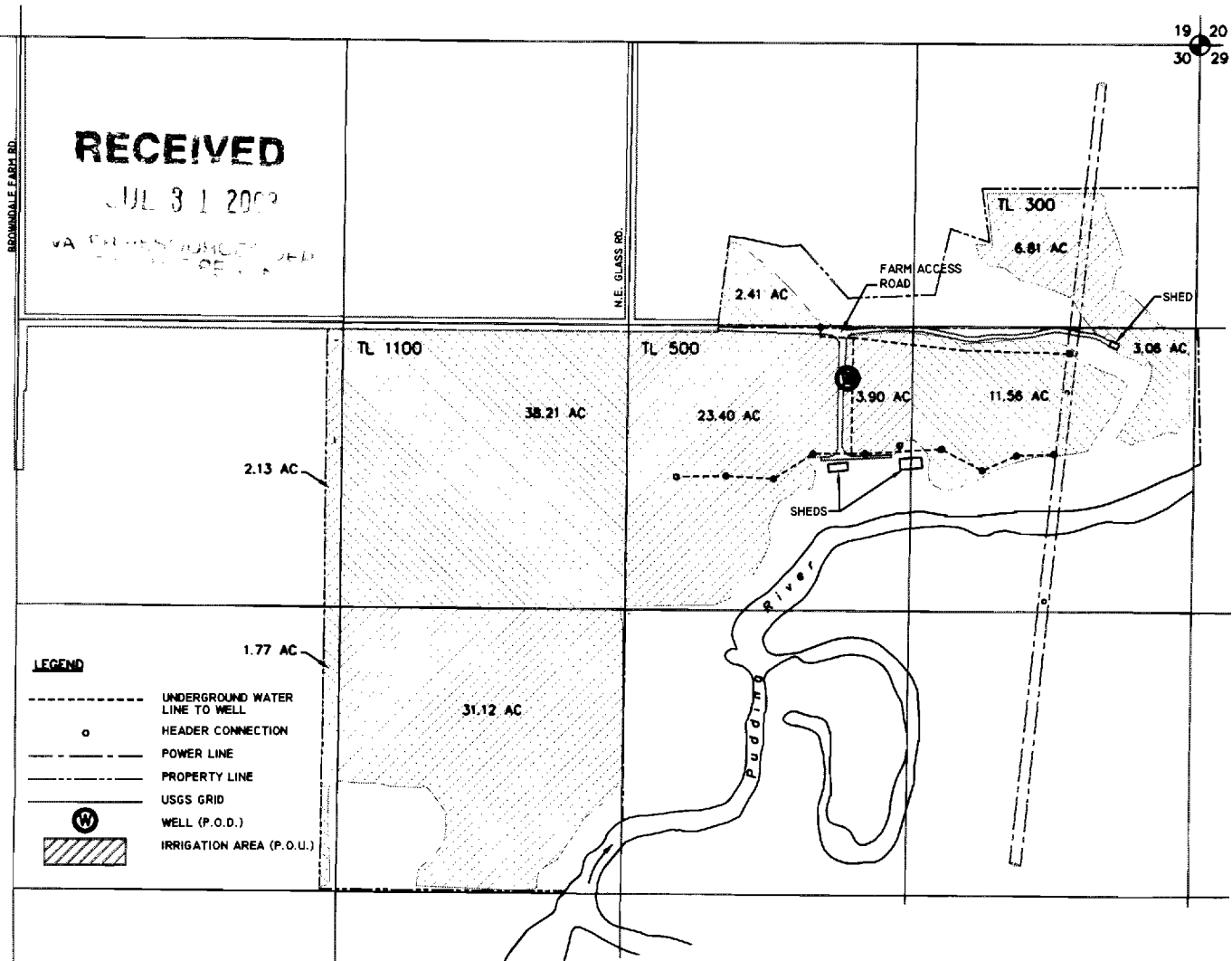
NE 1/4 NE 1/4	- 6.81 AC
NW 1/4 NE 1/4	- 2.41 AC
SE 1/4 NE 1/4	- 14.62 AC
SW 1/4 NE 1/4	- 27.30 AC
SE 1/4 NW 1/4	- 38.21 AC
SW 1/4 NW 1/4	- 2.13 AC
NE 1/4 SW 1/4	- 31.12 AC
NW 1/4 SW 1/4	- 1.77 AC
<b>TOTAL</b>	<b>= 124.37 AC</b>

SCALE: 1"=800'

PREPARATION OF THIS MAP IS FOR THE PURPOSE OF IDENTIFYING THE LOCATION OF THE WATER RIGHT ONLY. THERE IS NO INTENT TO PROVIDE DIMENSIONS OR LOCATION OF PROPERTY OWNERSHIP LINES.

**NOTE:**

WELL LOCATION (P.O.D.) IS 3638 FT. N. AND 3810 FT. E. OF SW CORNER OF SECTION 30.

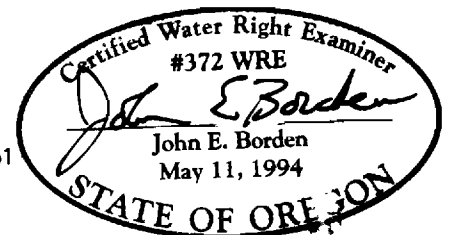


## FINAL PROOF SURVEY

AND CLAIM OF BENEFICIAL USE UNDER

Application No. G-13356, Permit No. G-11751  
In The Name Of  
Thomas L. Thomsen  
for

Irrigation from a well in the Pudding River Basin  
Surveyed April 10, 2003, by John E. Borden



*Expires 12-31-03*

JOHN BORDEN CONSULTING

4678 TREESIDE DR. N.E.  
SALEM, OR. 97305  
503-393-8736

**THOMSEN WATER RIGHT**

FILE PATH & NAME: D:\Thomsen\Thomsen-4-14-03.dwg