

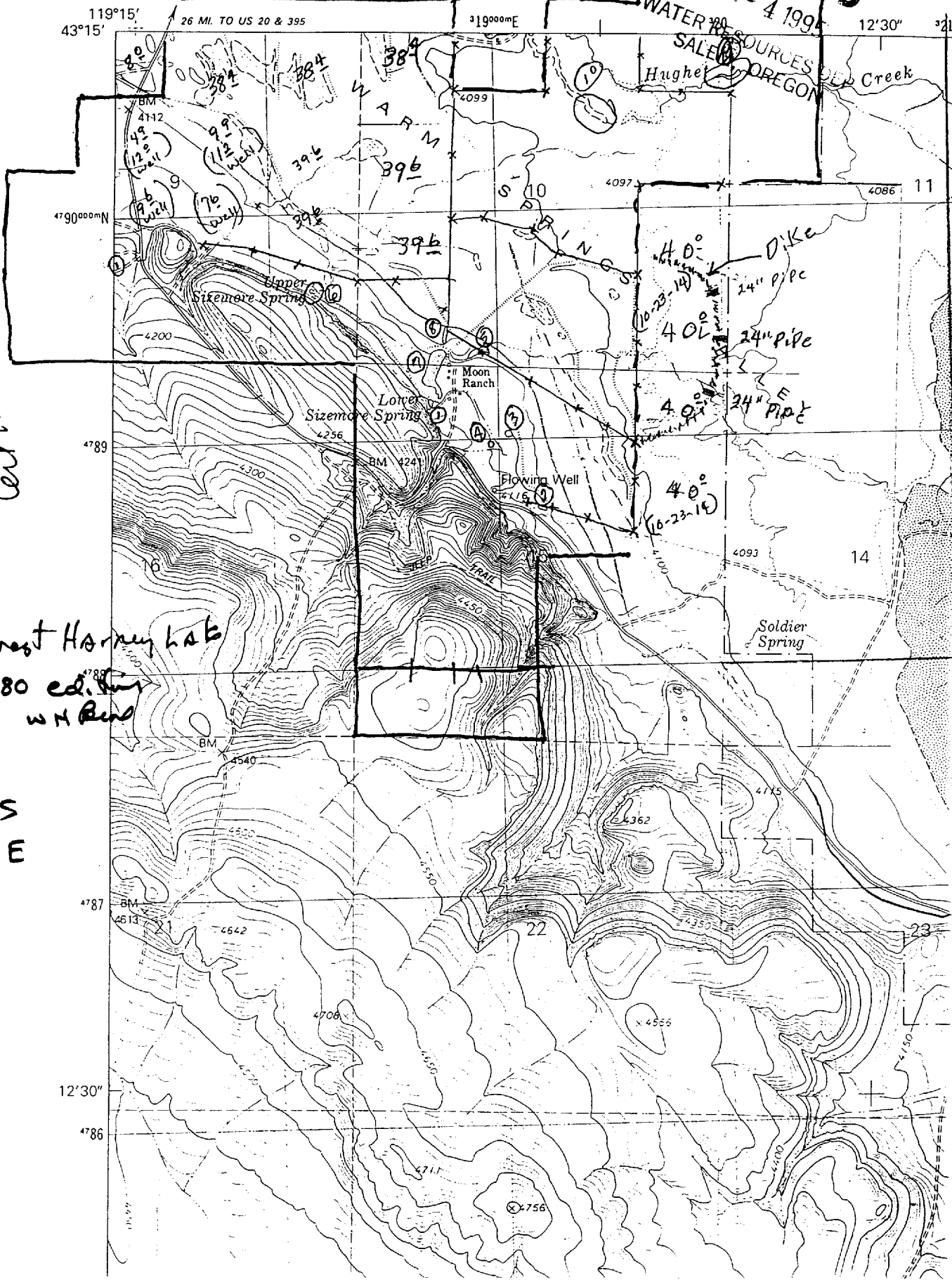
RECEIVED

JUL 12 1996

UNITED STATES WATER RESOURCES DEPT.
DEPARTMENT OF THE INTERIOR
GEOLOGICAL SURVEY

RECEIVED
JAN - 4 1994

270 N SE
(STINKING LAKE)



APPROXIMATE
Permit No. &
Certificate

South west Harney lake
1980 edition
W.H. Reed

T-27-S
R-29-E

Oregon

RECEIVED
JAN - 4 1995

WATER RESOURCES DEPARTMENT
1/4 SALEM, OREGON
Watermaster

RECEIVED

JUL 12 1996

WATER RESOURCES DEPT.
SALEM, OREGON

RECEIVED

AUG 19 1996

WATER RESOURCES DEPT.
SALEM, OREGON



POND #	TOWNSHIP	RANGE	SECTION	INSTREAM	WATER SOURCE	DAM	ACRES	ACRE FEET	MAX DEPTH	SPILLWAY	TAX LOT	QUADRANGLE MAP	DRAINAGE AREA
1.	27 S	29 E	15	out	SIEMORE SPRING	0 1	2	30	5'	Pipe	300	Southwest Harney	Harney Lake
2.	27 S	29 E	15	OUT	SIEMORE SPRING	0 1	1.6	1	5'	Pipe	300	"	Harney Lake
3.	27 S	29 E	15	OUT	SIEMORE SPRING	2 1	2	3	2'	Pipe	300	"	Harney Lake
4.	27 S	29 E	15	OUT	SIEMORE SPRING	2 1	2	3	2'	Pipe	300	"	Harney Lake
5.	27 S	29 E	10	OUT	SIEMORE SPRING	2 1	2	3	2'	Pipe	300	"	Harney Lake
6.	27 S	29 E	9	OUT	SIEMORE SPRING	5 1	0.2	4	5'	Pipe	300	"	Harney Lake

Application No. 83395
Permit No.