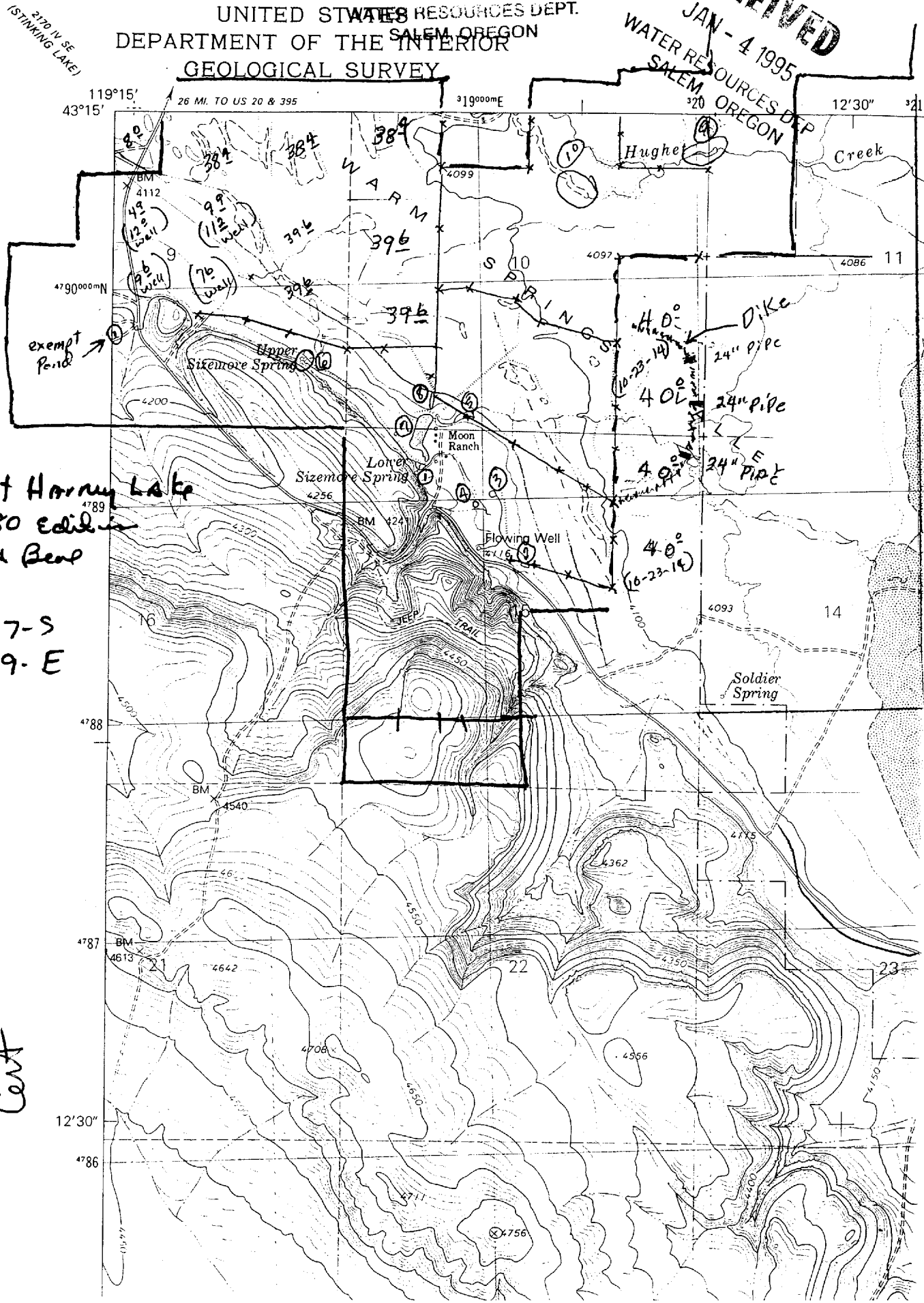


RECEIVED

JUL 12 1996

RECEIVED
JAN - 4 1995
WATER RESOURCES DEP
SALEM OREGON

UNITED STATES RESOURCES DEPT.
DEPARTMENT OF THE INTERIOR
GEOLOGICAL SURVEY



Southwest Harry Lake
1980 Edition
W.H. Beas

T-27-S
R-29-E

Application No. 83347
Point No. 80723

Cent