

SURVEYOR'S CERTIFICATE

I, W.E. Anderson of Tillamook, Ore do hereby certify that this map was made from notes taken during an actual survey made by me under the direct supervision of W.S. Coates County Surveyor of Tillamook County, and that it correctly represents the works herein shown.

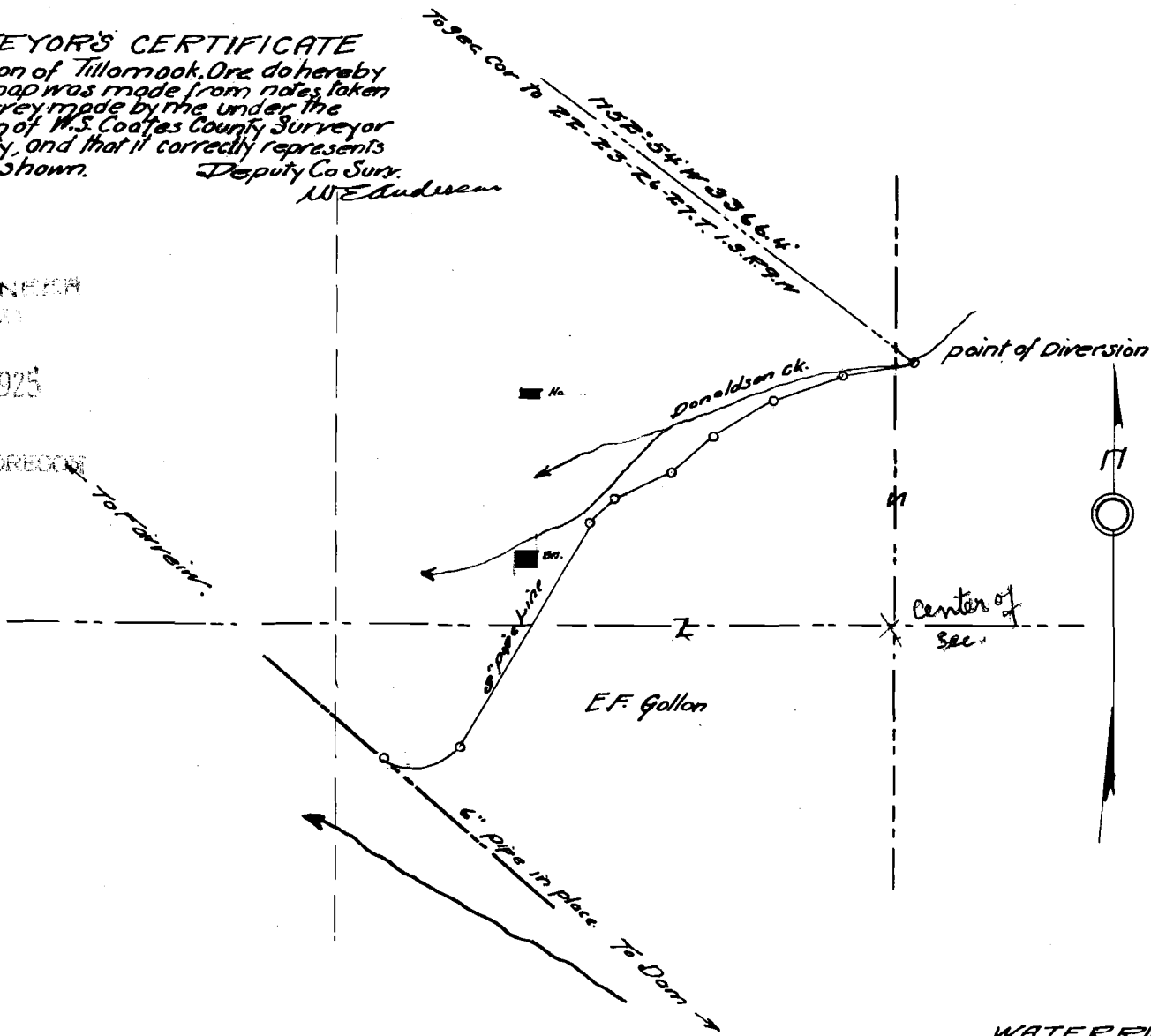
Deputy Co Surv.
W.E. Anderson

STATE ENGINEER
RECEIVED

FEB 12 1925

SALMON OREGON

To Fairvein



WATER RIGHT
FOR
FAIRVEIN WATER DIST.
On Donaldson Ck Sec 26.T.13R.9W.N.11
Scale 1"=400'

Application No. 9996
Permit No. 6665