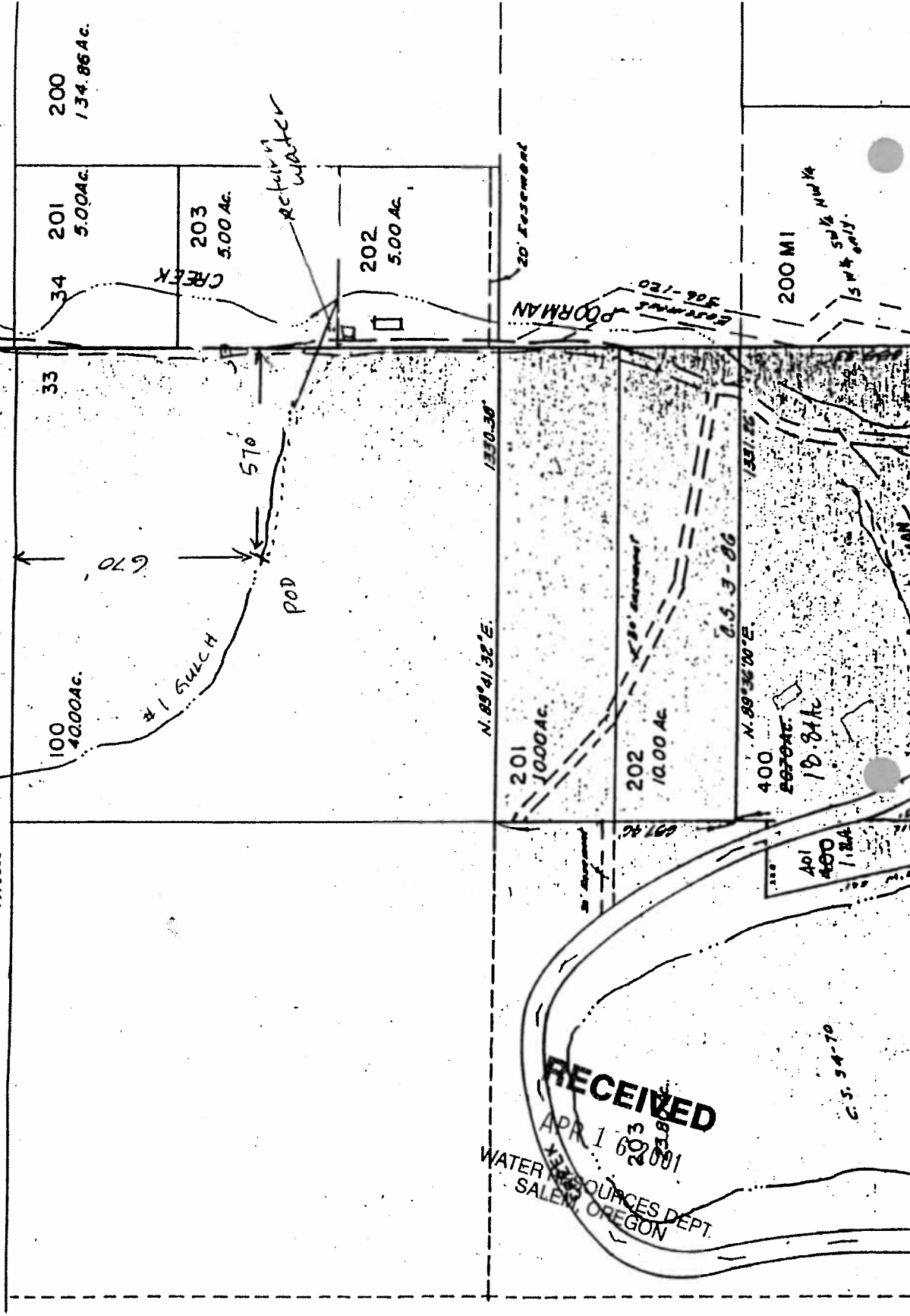


exhibit A
 TOWNSHIP 33 S RANGE 7 W WM
 JOSEPHINE, COUNTY

SCALE 1"=400'

33 7



RECEIVED
 APR 1 6 2001
 WATER RESOURCES DEPT.
 SALEM, OREGON

RECEIVED

MAR 28 2001

WATER RESOURCES DEPT.
 SALEM, OREGON