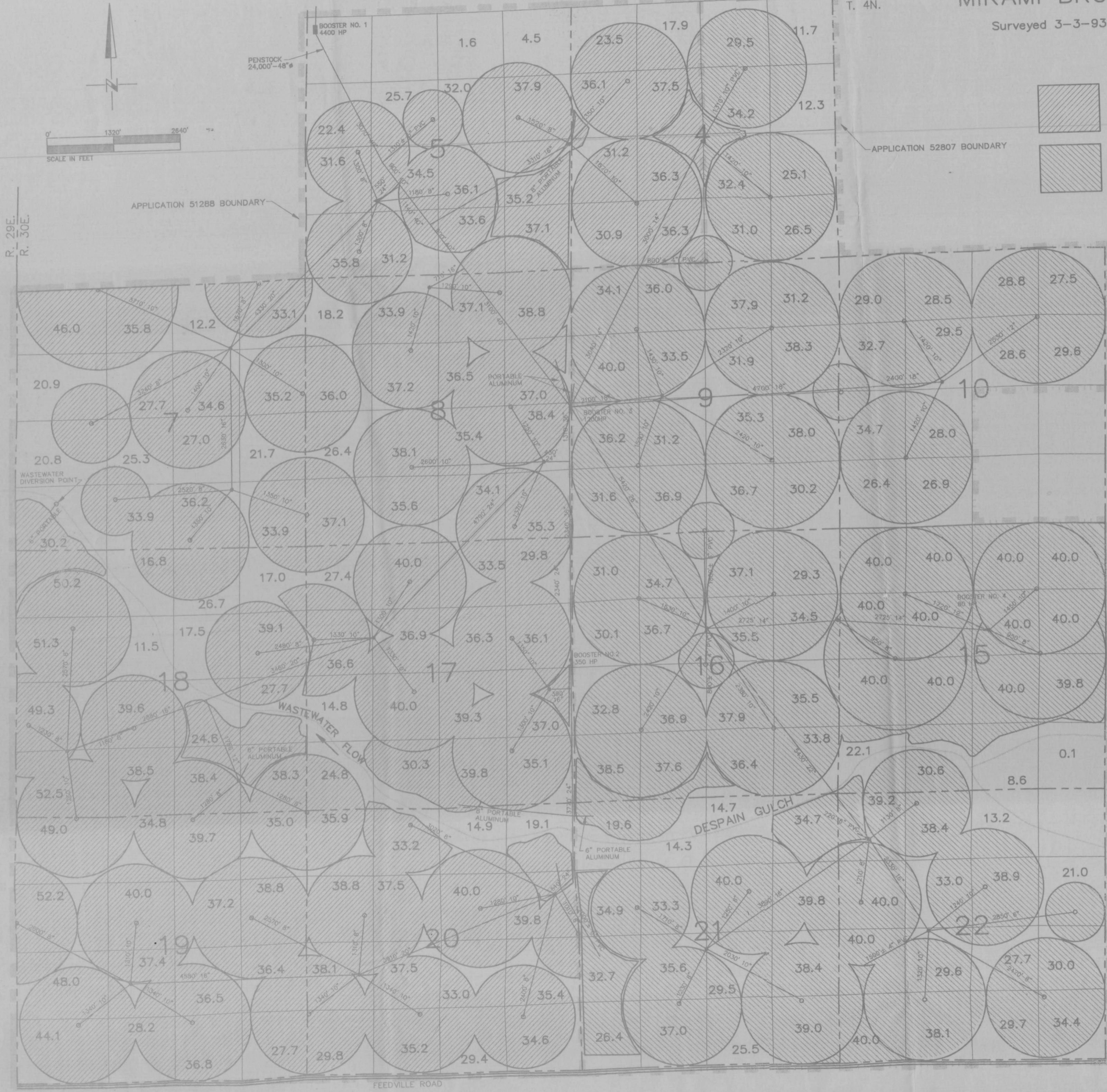


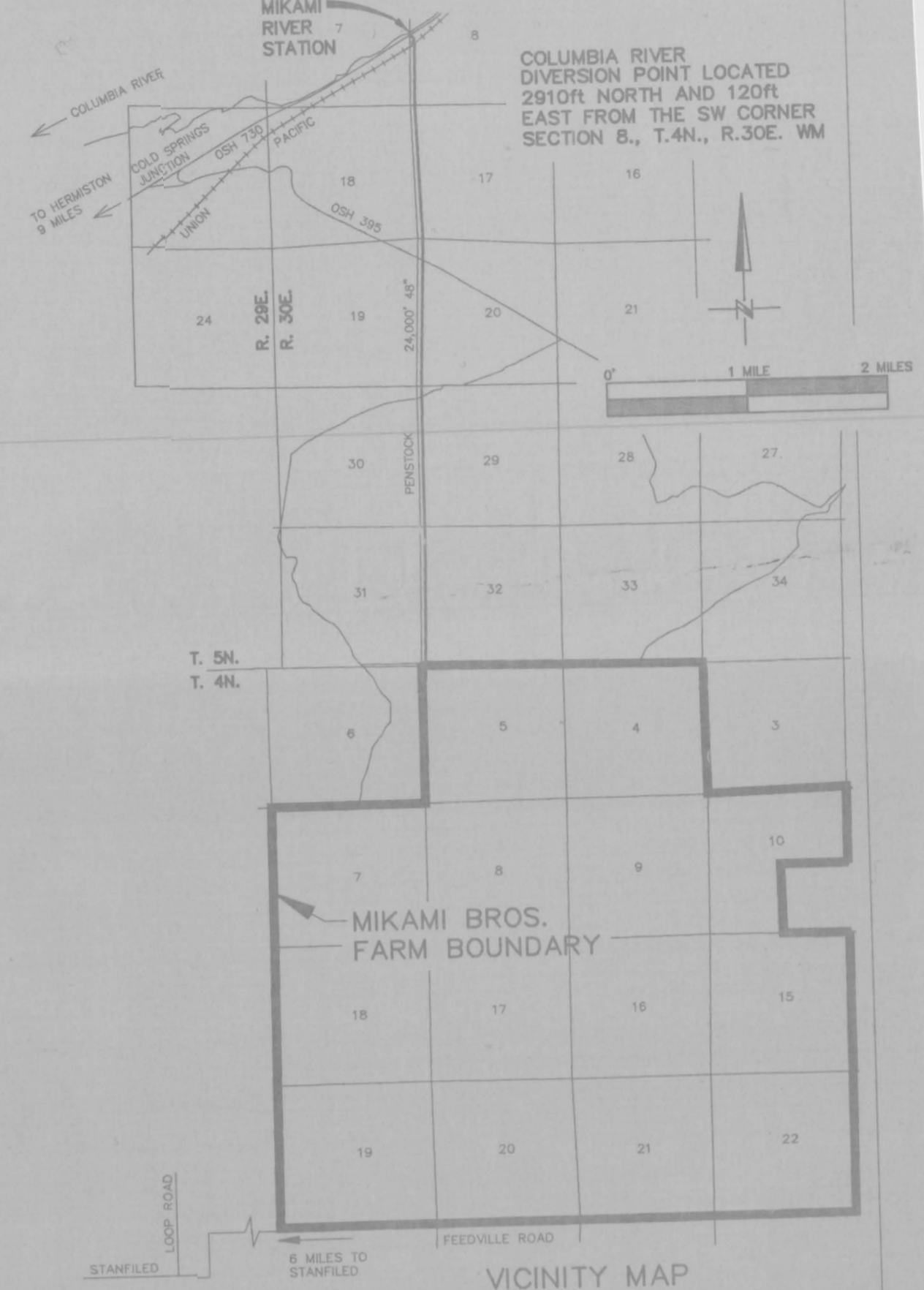
FINAL PROOF SURVEY UNDER MIKAMI BROTHERS

Surveyed 3-3-93 by DGV

T. 5N.
T. 4N.



- APPLICATION 51288
PERMIT 37121 (4905.62 ACRES)
ACTUAL IRRIGATED
3909.2 ACRES
- APPLICATION 52807
PERMIT 37833 (3200.00 ACRES)
ACTUAL IRRIGATED
3200.0 ACRES



NOTE:
 THIS MAP IS FOR THE PURPOSE OF IDENTIFYING THE LOCATION OF THE WATER RIGHT ONLY AND IS NOT INTENDED TO PROVIDE LEGAL DIMENSIONS OR LOCATION OF PROPERTY OWNERSHIP LINES.
 INFORMATION ON THIS MAP HAS BEEN PREPARED USING EXISTING MAPS AND OTHER INFORMATION MADE AVAILABLE BY THE OWNERS AND INFORMATION OBTAINED IN THE FIELD WHERE AVAILABLE.

IRRIGATED ACREAGE SUMMATION

APPLICATION 51288 PERMIT 37121 TOTAL IRRIGATED ACREAGE 3909.2				APPLICATION 52807 PERMIT 37833 TOTAL IRRIGATED ACREAGE 3200.0				
SEC	TRACT	IRRIGATED ACRES	SEC	TRACT	IRRIGATED ACRES	SEC	TRACT	IRRIGATED ACRES
4	NE1/4 NW1/4 17.9	17.9	18	NE1/4 NE1/4 17.0	17.0	4	NE1/4 NE1/4 11.7	11.7
	NW1/4 NW1/4 23.5	23.5		NW1/4 NE1/4 12.2	12.2		NW1/4 NE1/4 29.5	29.5
	SW1/4 NW1/4 36.1	36.1		SW1/4 NE1/4 17.5	17.5		SW1/4 NE1/4 34.2	34.2
	SE1/4 NW1/4 37.5	37.5		SE1/4 NE1/4 39.1	39.1		SE1/4 NE1/4 12.3	12.3
	NE1/4 SW1/4 36.3	36.3		NE1/4 NW1/4 16.8	16.8		NE1/4 NW1/4 40.0	40.0
	NW1/4 SW1/4 31.2	31.2		NW1/4 NW1/4 46.0	46.0		NW1/4 NW1/4 40.0	40.0
	SW1/4 SW1/4 30.9	30.9		SW1/4 NW1/4 20.9	20.9		SW1/4 NW1/4 40.0	40.0
	SE1/4 SW1/4 36.3	36.3		SE1/4 NW1/4 27.7	27.7		SE1/4 NW1/4 40.0	40.0
	NE1/4 SE1/4 21.7	21.7		NE1/4 SW1/4 25.3	25.3		NE1/4 SW1/4 40.0	40.0
	NW1/4 SE1/4 27.0	27.0		NW1/4 SW1/4 20.8	20.8		NW1/4 SW1/4 40.0	40.0
	SW1/4 SE1/4 36.2	36.2		SW1/4 SW1/4 30.2	30.2		SW1/4 SW1/4 22.1	22.1
	SE1/4 SE1/4 33.9	33.9		SE1/4 SW1/4 33.9	33.9		SE1/4 SW1/4 30.8	30.8
	TOTAL SEC 4 - 249.7			NE1/4 SE1/4 21.7	21.7		NE1/4 SE1/4 39.8	39.8
				NW1/4 SE1/4 27.0	27.0		NW1/4 SE1/4 24.8	24.8
				SW1/4 SE1/4 36.2	36.2		SW1/4 SE1/4 31.0	31.0
				SE1/4 SE1/4 33.9	33.9		SE1/4 SE1/4 0.1	0.1
				TOTAL SEC 7 - 474.5			TOTAL SEC 18 - 539.0	
5	NE1/4 NE1/4 4.5	4.5	8	NE1/4 NE1/4 38.8	38.8	9	NE1/4 NE1/4 31.2	31.2
	NW1/4 NE1/4 1.8	1.8		NW1/4 NE1/4 37.1	37.1		NW1/4 NE1/4 37.9	37.9
	SW1/4 NE1/4 32.0	32.0		SW1/4 NE1/4 36.5	36.5		SW1/4 NE1/4 31.9	31.9
	SE1/4 NE1/4 37.9	37.9		SE1/4 NE1/4 37.0	37.0		SE1/4 NE1/4 38.8	38.8
	NE1/4 NW1/4 0.0	0.0		NE1/4 NW1/4 33.9	33.9		NE1/4 NW1/4 38.0	38.0
	NW1/4 NW1/4 0.0	0.0		NW1/4 NW1/4 18.2	18.2		NW1/4 NW1/4 34.1	34.1
	SW1/4 NW1/4 22.4	22.4		SW1/4 NW1/4 30.0	30.0		SW1/4 NW1/4 40.0	40.0
	SE1/4 NW1/4 25.7	25.7		SE1/4 NW1/4 37.2	37.2		SE1/4 NW1/4 33.5	33.5
	NE1/4 SW1/4 34.5	34.5		NE1/4 SW1/4 38.1	38.1		NE1/4 SW1/4 31.2	31.2
	NW1/4 SW1/4 31.5	31.5		NW1/4 SW1/4 28.4	28.4		NW1/4 SW1/4 38.2	38.2
	SW1/4 SW1/4 22.4	22.4		SW1/4 SW1/4 37.1	37.1		SW1/4 SW1/4 31.8	31.8
	SE1/4 SW1/4 31.2	31.2		SE1/4 SW1/4 35.6	35.6		SE1/4 SW1/4 38.9	38.9
	NE1/4 SE1/4 35.2	35.2		NE1/4 SE1/4 38.4	38.4		NE1/4 SE1/4 38.0	38.0
	NW1/4 SE1/4 38.1	38.1		NW1/4 SE1/4 35.4	35.4		NW1/4 SE1/4 35.3	35.3
	SW1/4 SE1/4 33.6	33.6		SW1/4 SE1/4 34.1	34.1		SW1/4 SE1/4 36.7	36.7
	SE1/4 SE1/4 37.1	37.1		SE1/4 SE1/4 35.3	35.3		SE1/4 SE1/4 27.7	27.7
	TOTAL SEC 5 - 399.2			TOTAL SEC 8 - 555.1			TOTAL SEC 19 - 621.8	
17	NE1/4 NE1/4 29.8	29.8	20	NE1/4 NE1/4 19.1	19.1	10	NE1/4 NE1/4 27.5	27.5
	NW1/4 NE1/4 33.6	33.6		NW1/4 NE1/4 14.9	14.9		NW1/4 NE1/4 28.8	28.8
	SW1/4 NE1/4 36.3	36.3		SW1/4 NE1/4 36.3	36.3		SW1/4 NE1/4 40.0	40.0
	SE1/4 NE1/4 36.1	36.1		SE1/4 NE1/4 36.1	36.1		SE1/4 NE1/4 29.8	29.8
	NE1/4 NW1/4 40.0	40.0		NE1/4 NW1/4 40.0	40.0		NE1/4 NW1/4 28.5	28.5
	NW1/4 NW1/4 27.4	27.4		NW1/4 NW1/4 33.2	33.2		NW1/4 NW1/4 29.0	29.0
	SW1/4 NW1/4 38.6	38.6		SW1/4 NW1/4 35.9	35.9		SW1/4 NW1/4 34.7	34.7
	SE1/4 NW1/4 36.9	36.9		SE1/4 NW1/4 37.5	37.5		SE1/4 NW1/4 29.5	29.5
	NE1/4 SW1/4 40.0	40.0		NE1/4 SW1/4 37.5	37.5		NE1/4 SW1/4 28.0	28.0
	NW1/4 SW1/4 14.8	14.8		NW1/4 SW1/4 38.1	38.1		NW1/4 SW1/4 26.4	26.4
	SW1/4 SW1/4 24.8	24.8		SW1/4 SW1/4 39.0	39.0		SW1/4 SW1/4 29.8	29.8
	SE1/4 SW1/4 30.3	30.3		SE1/4 SW1/4 30.3	30.3		SE1/4 SW1/4 26.9	26.9
	NE1/4 SE1/4 37.0	37.0		NE1/4 SE1/4 35.4	35.4		NE1/4 SE1/4 35.4	35.4
	NW1/4 SE1/4 36.3	36.3		NW1/4 SE1/4 33.0	33.0		NW1/4 SE1/4 33.0	33.0
	SW1/4 SE1/4 39.8	39.8		SW1/4 SE1/4 28.4	28.4		SW1/4 SE1/4 28.4	28.4
	SE1/4 SE1/4 35.1	35.1		SE1/4 SE1/4 34.6	34.6		SE1/4 SE1/4 34.6	34.6
	TOTAL SEC 17 - 537.7			TOTAL SEC 20 - 532.2			TOTAL SEC 10 - 350.2	

MIKAMI BROS. FARM
T. 4N., R. 30E., W.M.