



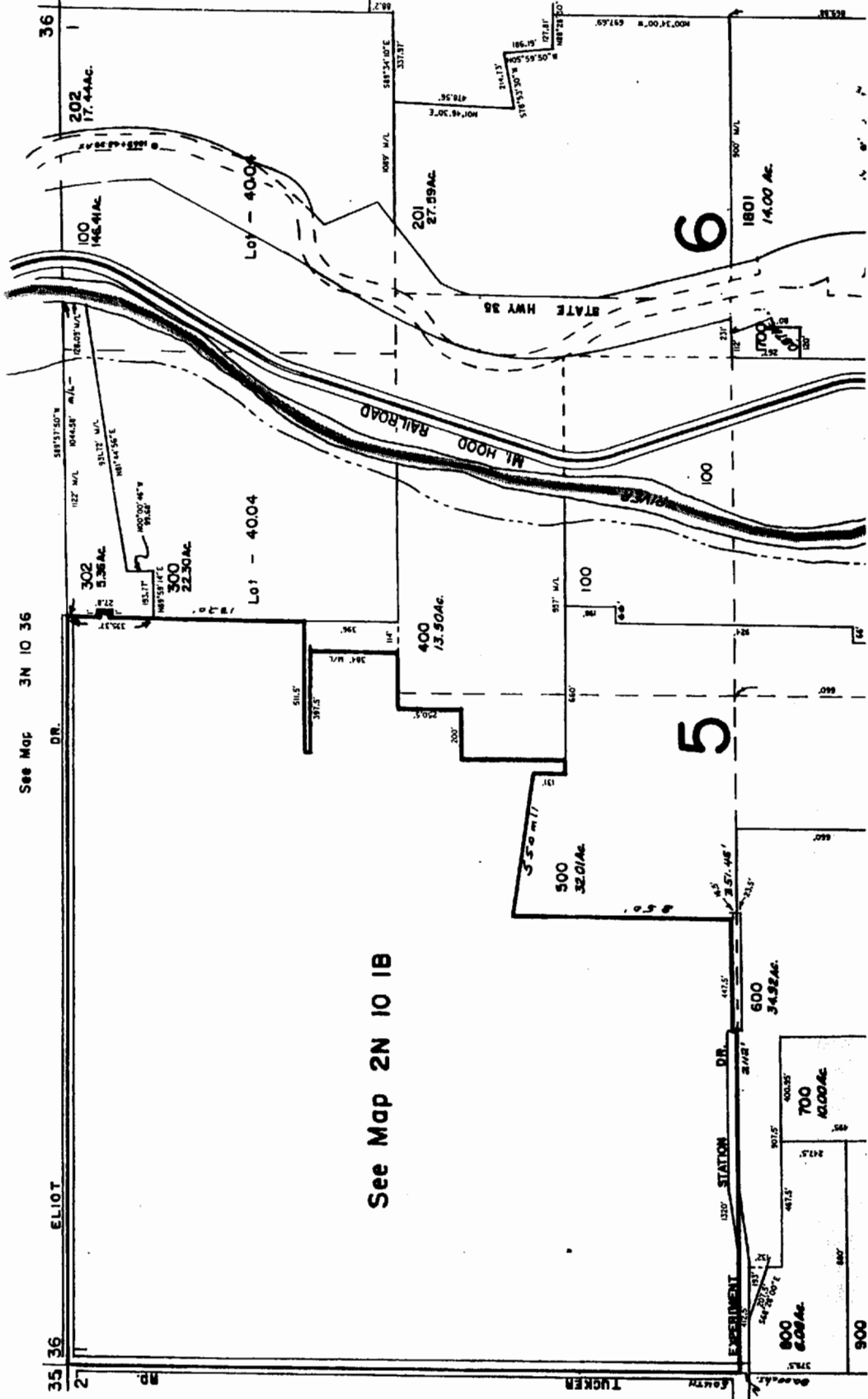


**HOOD RIVER COUNTY**  
1"=400'

THIS MAP WAS PREPARED FOR  
ASSESSMENT PURPOSE ONLY

Cancelled No's.  
1300  
200  
301  
102

**RECEIVED**  
JUN 03 2002  
WATER RESOURCES DEPT.  
SALEM, OREGON



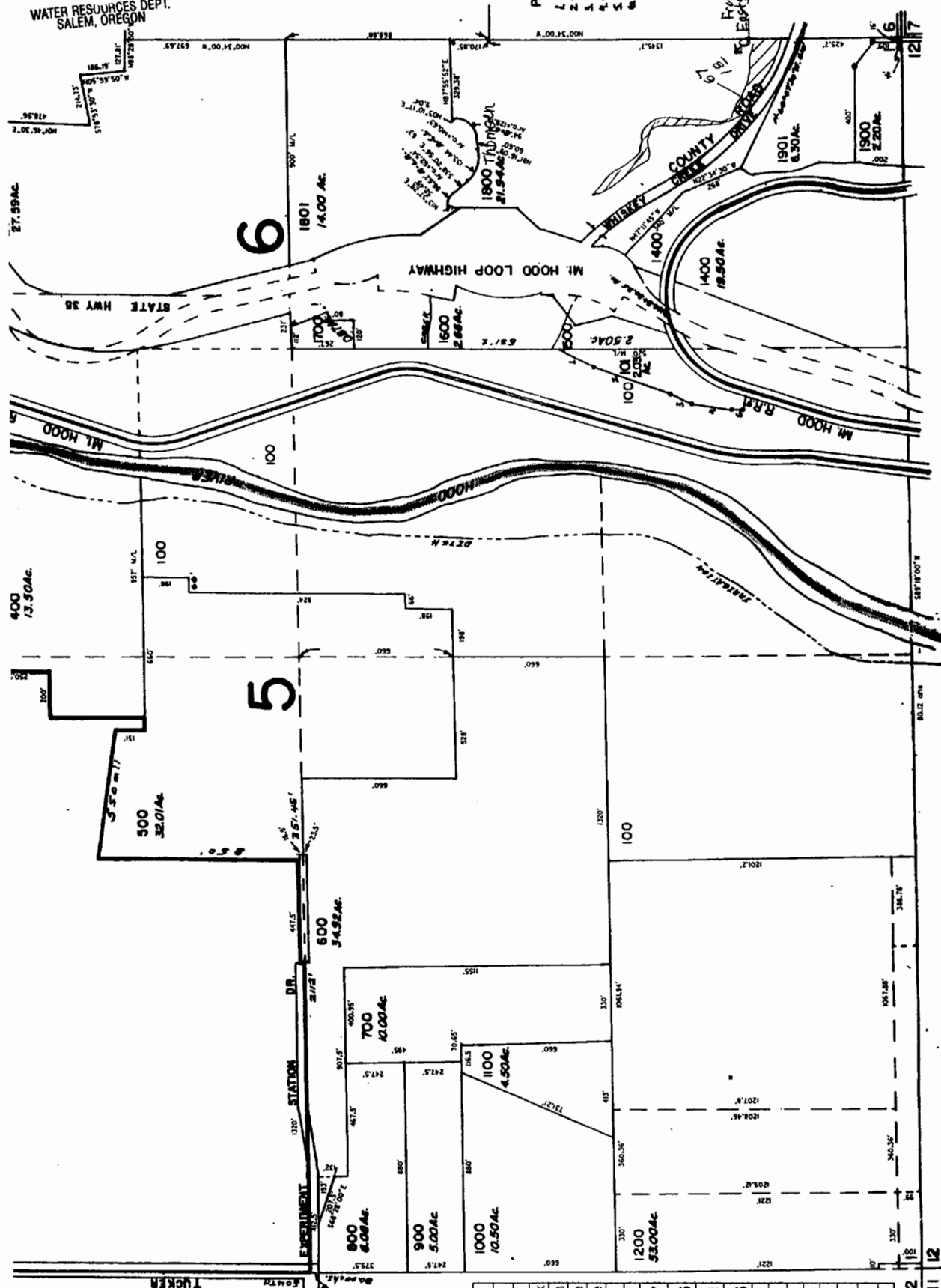
See Map 2N 10 2

See Map 2N 11 6

PARCEL  
 1. 5 247' 30" 30'  
 2. 5 147' 00" 30'  
 3. 5 224' 20" 30'  
 4. 5 047' 21" 30"  
 5. 5 047' 21" 30"  
 6. 5 047' 21" 30"

2N  
 11E

REVISED 9-26-96, LC



See Map 2N 10 2

See Map 2N 10 12

Map Legend	
Map Symbols	
Turnout Box	—
Open Ditch	---
Pipeline	---
Property Line	---
Water Right Certificate	
P - 26517	
P - 30825	
P - 32101	
P - 32685	
East Fork Irrigation District	
Hood River, Oregon	
Section 2N-10-01	
Scale 1" = 400 cms	

2 11 12

THIS MAP WAS PREPARED FOR  
ASSESSMENT PURPOSE ONLY

Hood River County  
1" = 200'

RECEIVED

JUN 03 2002

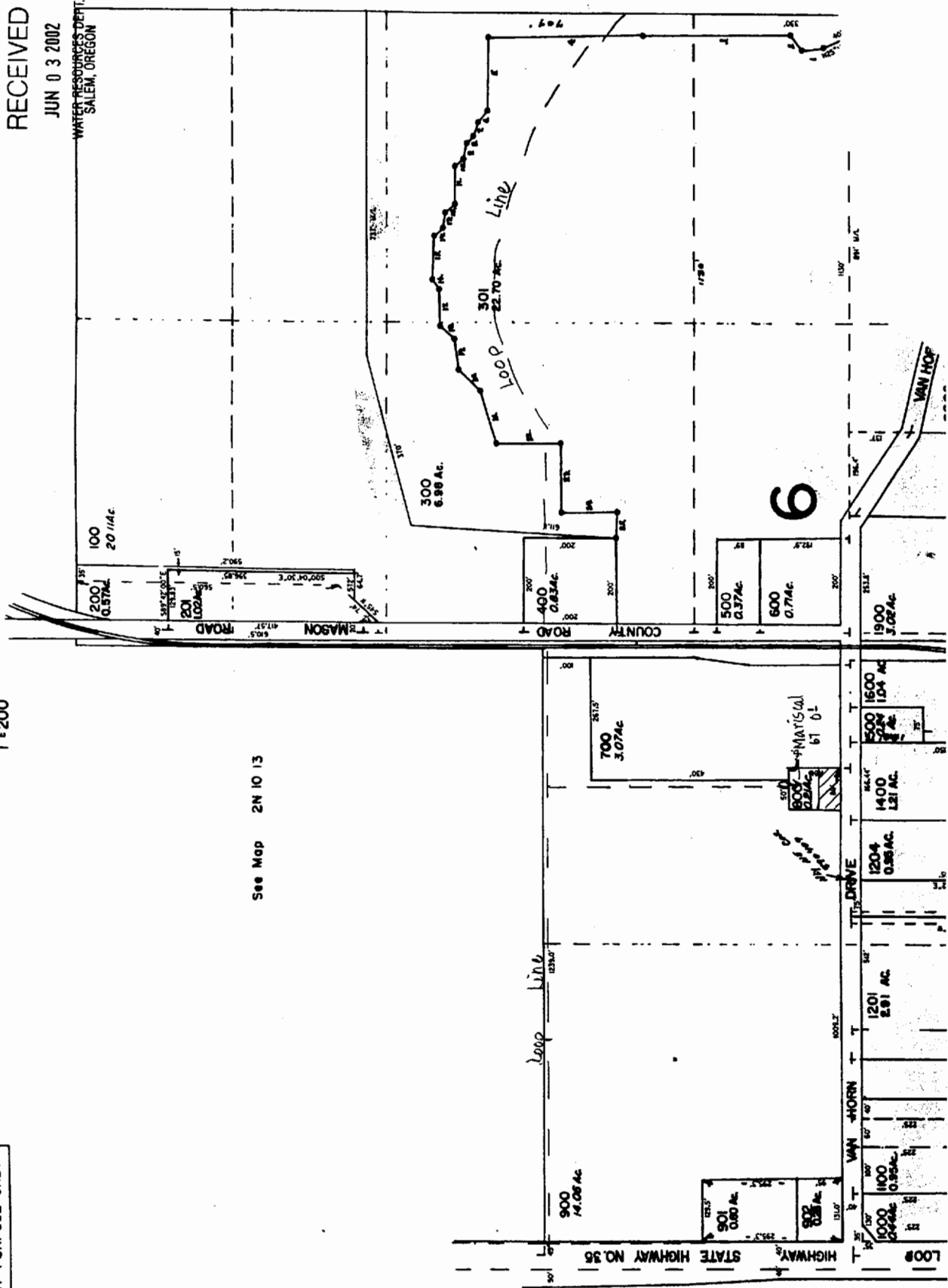
WATER RESOURCES DEPT.  
SALEM, OREGON

1/4 Cor.

See Map 2N 10 13

See Map 2N 10 13

PARCEL 301  
1. 107.117 AC  
2. 107.117 AC  
3. 107.117 AC  
4. 107.117 AC  
5. 107.117 AC  
6. 107.117 AC  
7. 107.117 AC  
8. 107.117 AC  
9. 107.117 AC  
10. 107.117 AC  
11. 107.117 AC  
12. 107.117 AC  
13. 107.117 AC  
14. 107.117 AC  
15. 107.117 AC  
16. 107.117 AC  
17. 107.117 AC  
18. 107.117 AC  
19. 107.117 AC  
20. 107.117 AC  
21. 107.117 AC  
22. 107.117 AC  
23. 107.117 AC  
24. 107.117 AC  
25. 107.117 AC  
26. 107.117 AC  
27. 107.117 AC  
28. 107.117 AC  
29. 107.117 AC  
30. 107.117 AC  
31. 107.117 AC  
32. 107.117 AC  
33. 107.117 AC  
34. 107.117 AC  
35. 107.117 AC  
36. 107.117 AC  
37. 107.117 AC  
38. 107.117 AC  
39. 107.117 AC  
40. 107.117 AC  
41. 107.117 AC  
42. 107.117 AC  
43. 107.117 AC  
44. 107.117 AC  
45. 107.117 AC  
46. 107.117 AC  
47. 107.117 AC  
48. 107.117 AC  
49. 107.117 AC  
50. 107.117 AC  
51. 107.117 AC  
52. 107.117 AC  
53. 107.117 AC  
54. 107.117 AC  
55. 107.117 AC  
56. 107.117 AC  
57. 107.117 AC  
58. 107.117 AC  
59. 107.117 AC  
60. 107.117 AC  
61. 107.117 AC  
62. 107.117 AC  
63. 107.117 AC  
64. 107.117 AC  
65. 107.117 AC  
66. 107.117 AC  
67. 107.117 AC  
68. 107.117 AC  
69. 107.117 AC  
70. 107.117 AC  
71. 107.117 AC  
72. 107.117 AC  
73. 107.117 AC  
74. 107.117 AC  
75. 107.117 AC  
76. 107.117 AC  
77. 107.117 AC  
78. 107.117 AC  
79. 107.117 AC  
80. 107.117 AC  
81. 107.117 AC  
82. 107.117 AC  
83. 107.117 AC  
84. 107.117 AC  
85. 107.117 AC  
86. 107.117 AC  
87. 107.117 AC  
88. 107.117 AC  
89. 107.117 AC  
90. 107.117 AC  
91. 107.117 AC  
92. 107.117 AC  
93. 107.117 AC  
94. 107.117 AC  
95. 107.117 AC  
96. 107.117 AC  
97. 107.117 AC  
98. 107.117 AC  
99. 107.117 AC  
100. 107.117 AC



1" = 200'

See Map 2N 10 13

See Map 2N 10 13

PARCEL 301  
1. 107.117 AC  
2. 107.117 AC  
3. 107.117 AC  
4. 107.117 AC  
5. 107.117 AC  
6. 107.117 AC  
7. 107.117 AC  
8. 107.117 AC  
9. 107.117 AC  
10. 107.117 AC  
11. 107.117 AC  
12. 107.117 AC  
13. 107.117 AC  
14. 107.117 AC  
15. 107.117 AC  
16. 107.117 AC  
17. 107.117 AC  
18. 107.117 AC  
19. 107.117 AC  
20. 107.117 AC  
21. 107.117 AC  
22. 107.117 AC  
23. 107.117 AC  
24. 107.117 AC  
25. 107.117 AC  
26. 107.117 AC  
27. 107.117 AC  
28. 107.117 AC  
29. 107.117 AC  
30. 107.117 AC  
31. 107.117 AC  
32. 107.117 AC  
33. 107.117 AC  
34. 107.117 AC  
35. 107.117 AC  
36. 107.117 AC  
37. 107.117 AC  
38. 107.117 AC  
39. 107.117 AC  
40. 107.117 AC  
41. 107.117 AC  
42. 107.117 AC  
43. 107.117 AC  
44. 107.117 AC  
45. 107.117 AC  
46. 107.117 AC  
47. 107.117 AC  
48. 107.117 AC  
49. 107.117 AC  
50. 107.117 AC  
51. 107.117 AC  
52. 107.117 AC  
53. 107.117 AC  
54. 107.117 AC  
55. 107.117 AC  
56. 107.117 AC  
57. 107.117 AC  
58. 107.117 AC  
59. 107.117 AC  
60. 107.117 AC  
61. 107.117 AC  
62. 107.117 AC  
63. 107.117 AC  
64. 107.117 AC  
65. 107.117 AC  
66. 107.117 AC  
67. 107.117 AC  
68. 107.117 AC  
69. 107.117 AC  
70. 107.117 AC  
71. 107.117 AC  
72. 107.117 AC  
73. 107.117 AC  
74. 107.117 AC  
75. 107.117 AC  
76. 107.117 AC  
77. 107.117 AC  
78. 107.117 AC  
79. 107.117 AC  
80. 107.117 AC  
81. 107.117 AC  
82. 107.117 AC  
83. 107.117 AC  
84. 107.117 AC  
85. 107.117 AC  
86. 107.117 AC  
87. 107.117 AC  
88. 107.117 AC  
89. 107.117 AC  
90. 107.117 AC  
91. 107.117 AC  
92. 107.117 AC  
93. 107.117 AC  
94. 107.117 AC  
95. 107.117 AC  
96. 107.117 AC  
97. 107.117 AC  
98. 107.117 AC  
99. 107.117 AC  
100. 107.117 AC



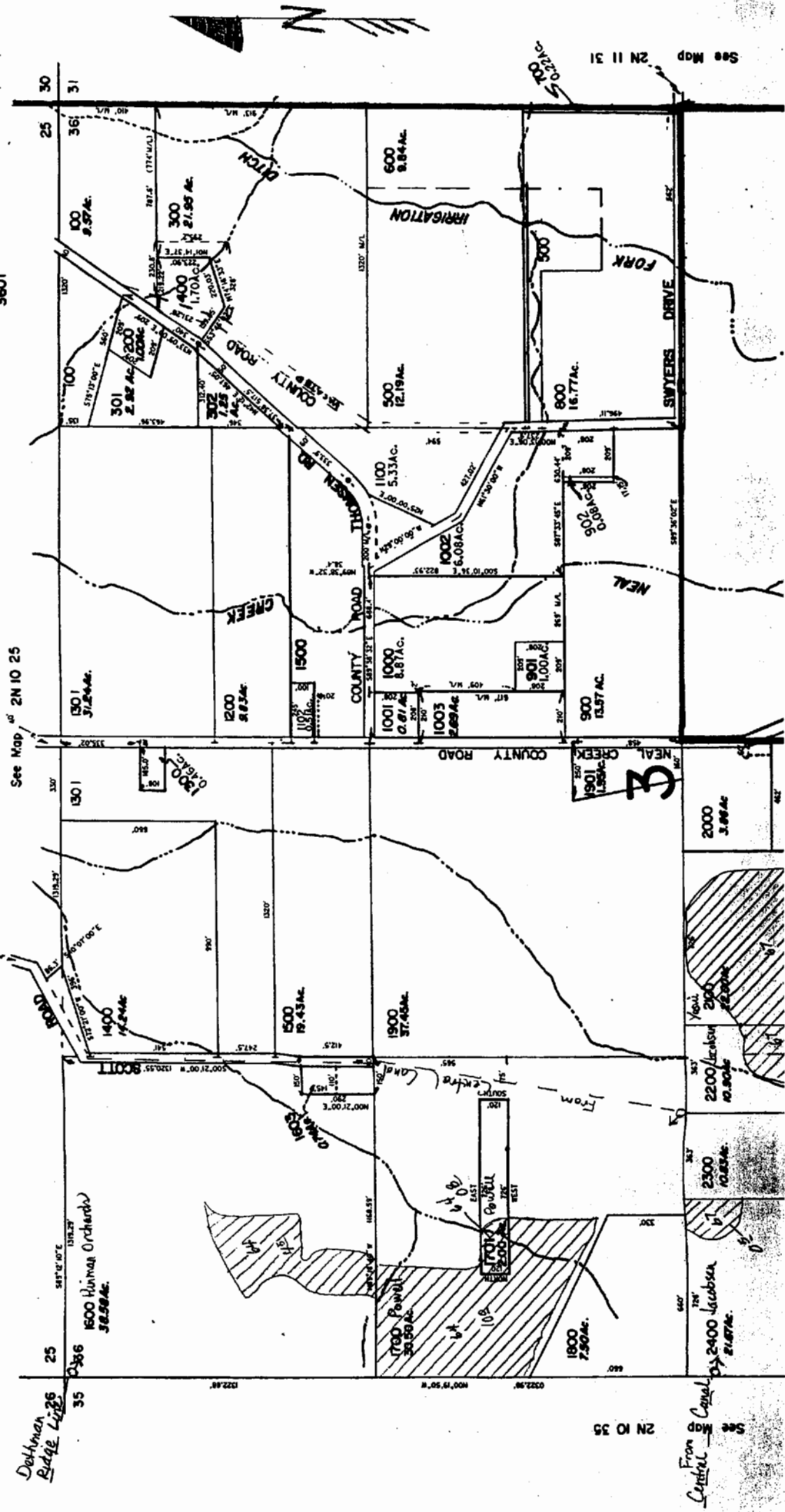
Section 36 T2N R10E WM  
Hood River County

- Cancelled No's  
 501 3000 thru  
 502 4001  
 1101 1601  
 1602 3500  
 3500 3601  
 3601

RECEIVED  
 JUN 03 2002  
 WATER RESOURCES DEPT.  
 SALEM, OREGON

THIS MAP WAS PREPARED FOR  
 ASSESSMENT PURPOSE ONLY

1"=400'



See Map 2N 10 35

From Central  
 Canal

See Map 2N 11 31

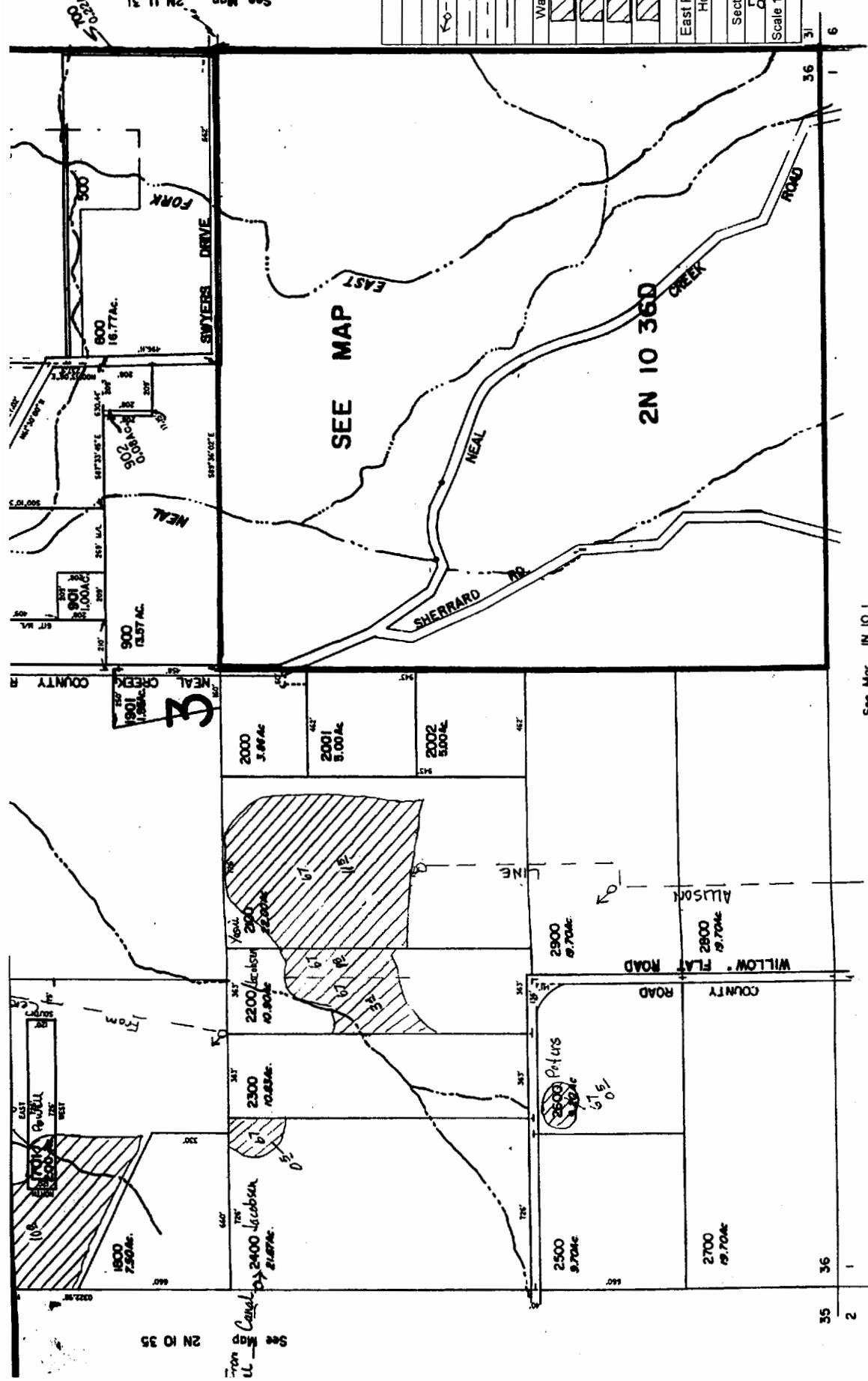
See Map 2N 10 25

Dekelman  
 Ridge Line

RECEIVED  
 JUN 03 2002  
 WATER RESOURCES DEPT.  
 SALEM, OREGON

Map Legend	
Map Symbols	
--- Turnout Box	
--- Open Ditch	
--- Pipeline	
--- Property Line	
Water Right Certificate	
P - 26517	
P - 30825	
P - 32101	
P - 32685	
East Fork Irrigation District Hood River, Oregon	
Section 2N-10-36	
Scale 1" = 400 cms	

2N 10 36  
 REVISED 10-4-96, LC



See Map 2N 10 35  
 U.L. Caryl

See Map IN 10 1