

THIS MAP WAS PREPARED FOR ASSESSMENT PURPOSE ONLY

SECTION 10 T.1N. R.10E. W.M. HOOD RIVER COUNTY

RECEIVED

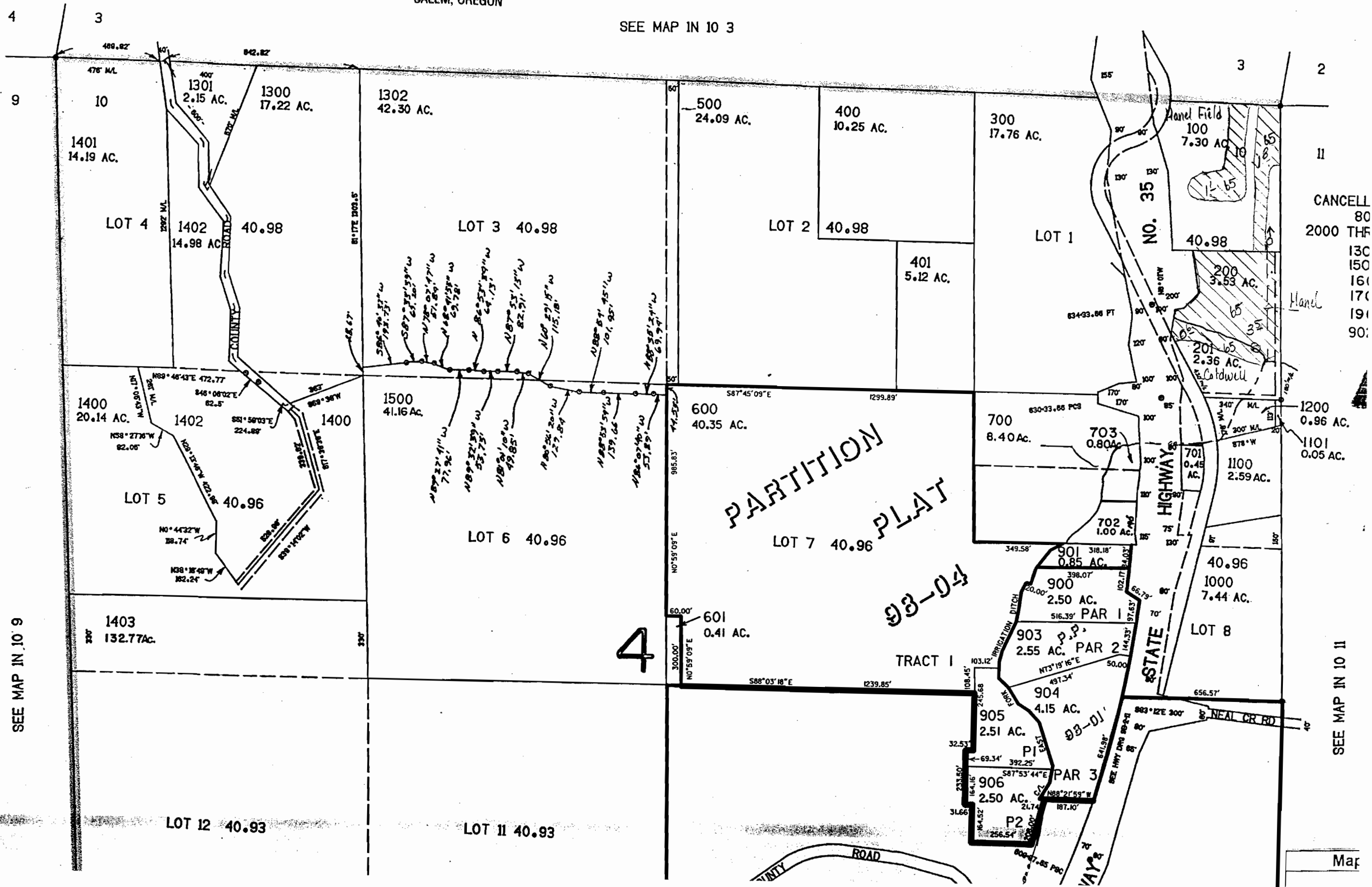
JUN 13 2002

WATER RESOURCES DEPT.
SALEM, OREGON

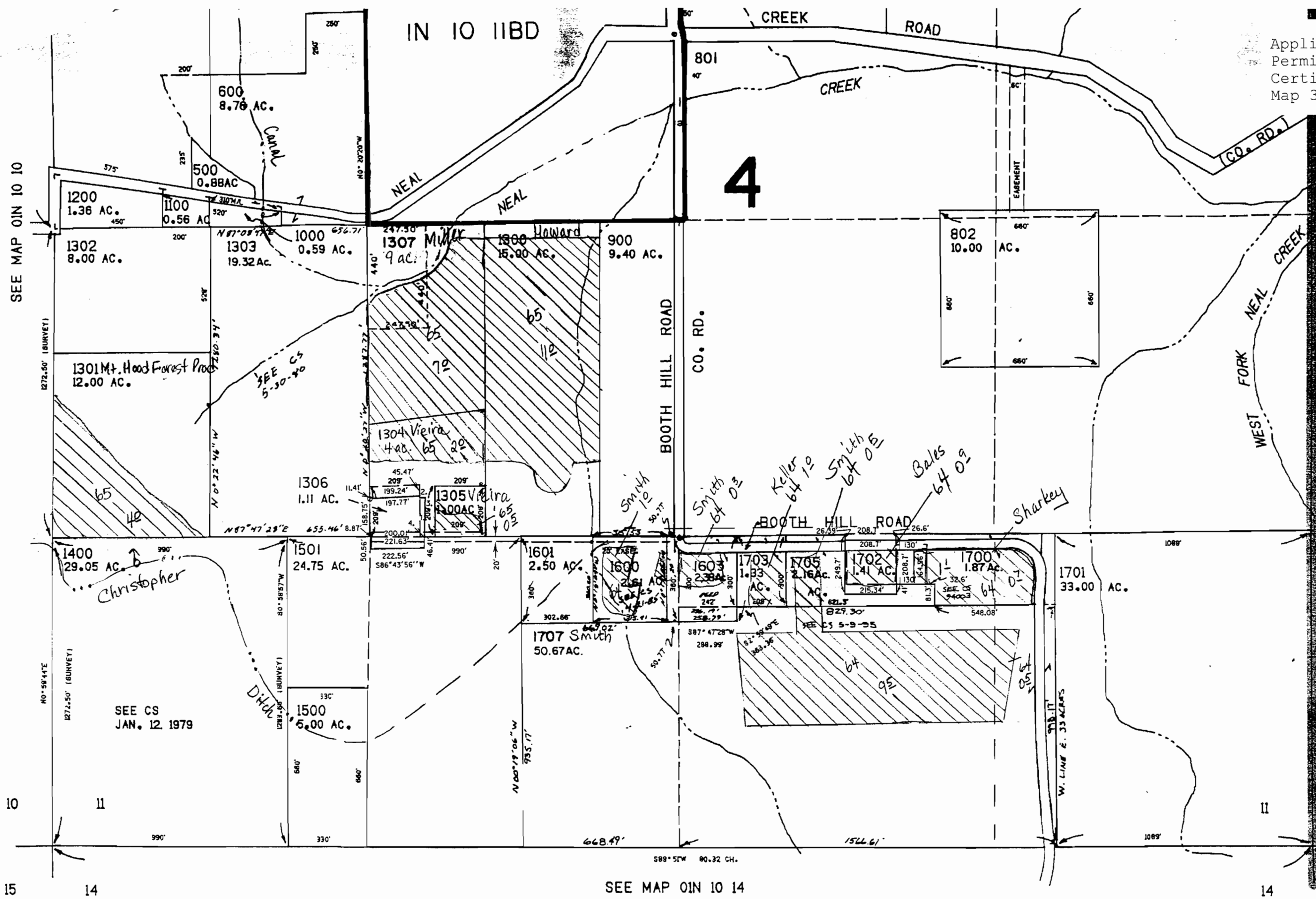
1"=400'

Application No. 41228
Permit No. 30825
Certificate No. 80928
Map 1 of 18

SEE MAP IN 10 3



Application No. 41228
 Permit No. 30825
 Certificate No. 80928
 Map 3 of 18



SEE MAP OIN 10 12

RECEIVED
 JUN 03 2002
 WATER RESOURCES DEPT.
 SALEM, OREGON

Map Legend	
Map Symbols	
	Turnout Box
	Open Ditch
	Pipeline
	Property Line
Water Right Certificate	
	P - 26517
	P - 30825
	P - 32101
	P - 32685
East Fork Irrigation District Hood River, Oregon	
Section 1N-10-11	
Scale 1" = 400 cms	

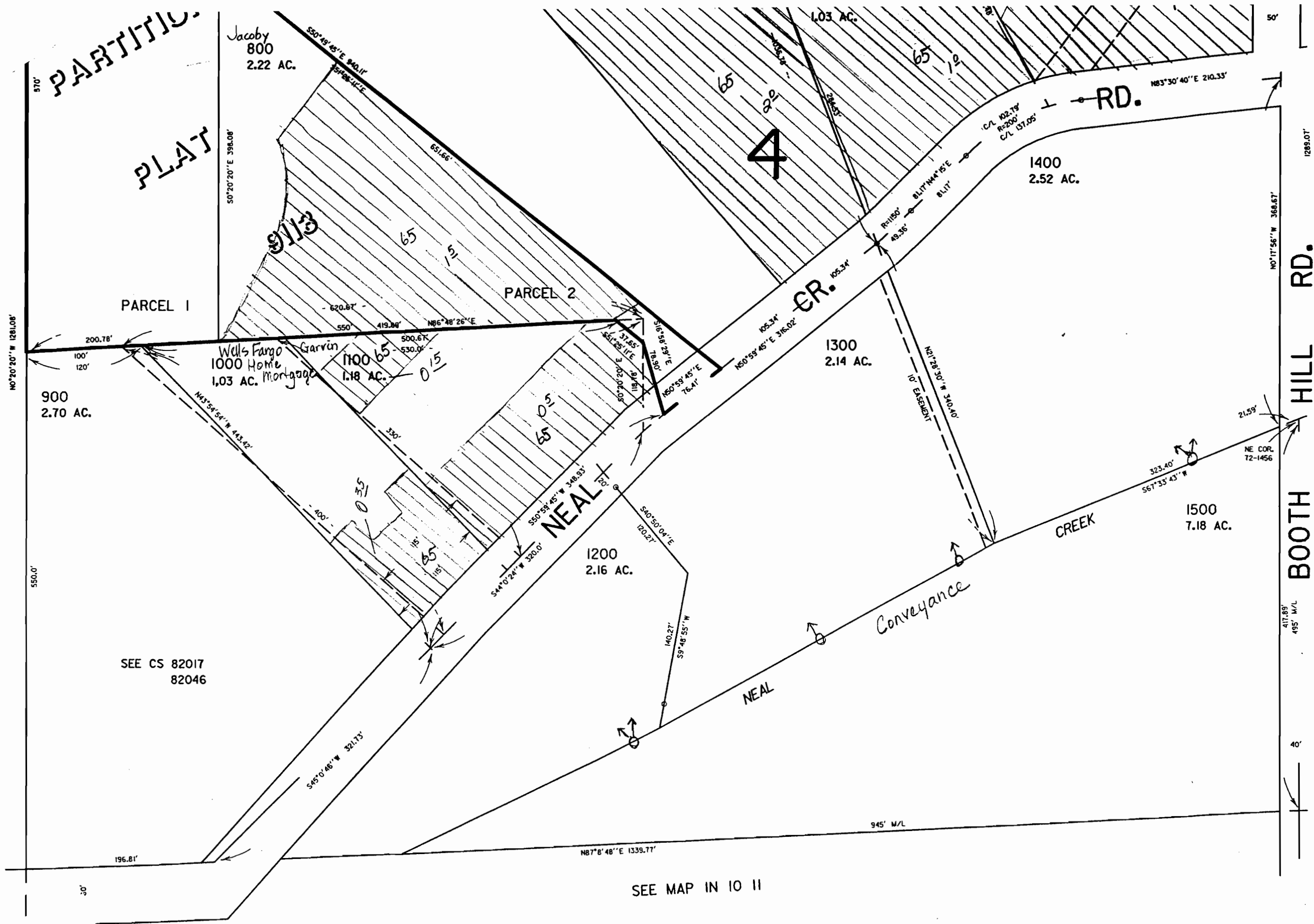
SEE MAP OIN 10 10

SEE MAP OIN 10 14

OIN 10 11

Revised 12/2/99, JD

Application No. 41228
 Permit No. 30825
 Certificate No. 80928
 Map 5 of 18



SEE MAP IN 10 11

Map Legend	
Map Symbols	
	Turnout Box
	Open Ditch
	Pipeline
	Property Line
Water Right Certificate	
	P - 26517
	P - 30825
	P - 32101
	P - 32685
East Fork Irrigation District Hood River, Oregon	
Section 1N-10-11BD	
Scale 1" = 100 cms	

CEN. SEC.
RECEIVED
 JUN 03 2002
 WATER RESOURCES DEPT.
 SALEM, OREGON

IN 10 11BD
 REVISED 6-7-95

SEE CS 82017
 82046

SEE MAP IN 10 11

THIS MAP WAS PREPARED FOR ASSESSMENT PURPOSE ONLY

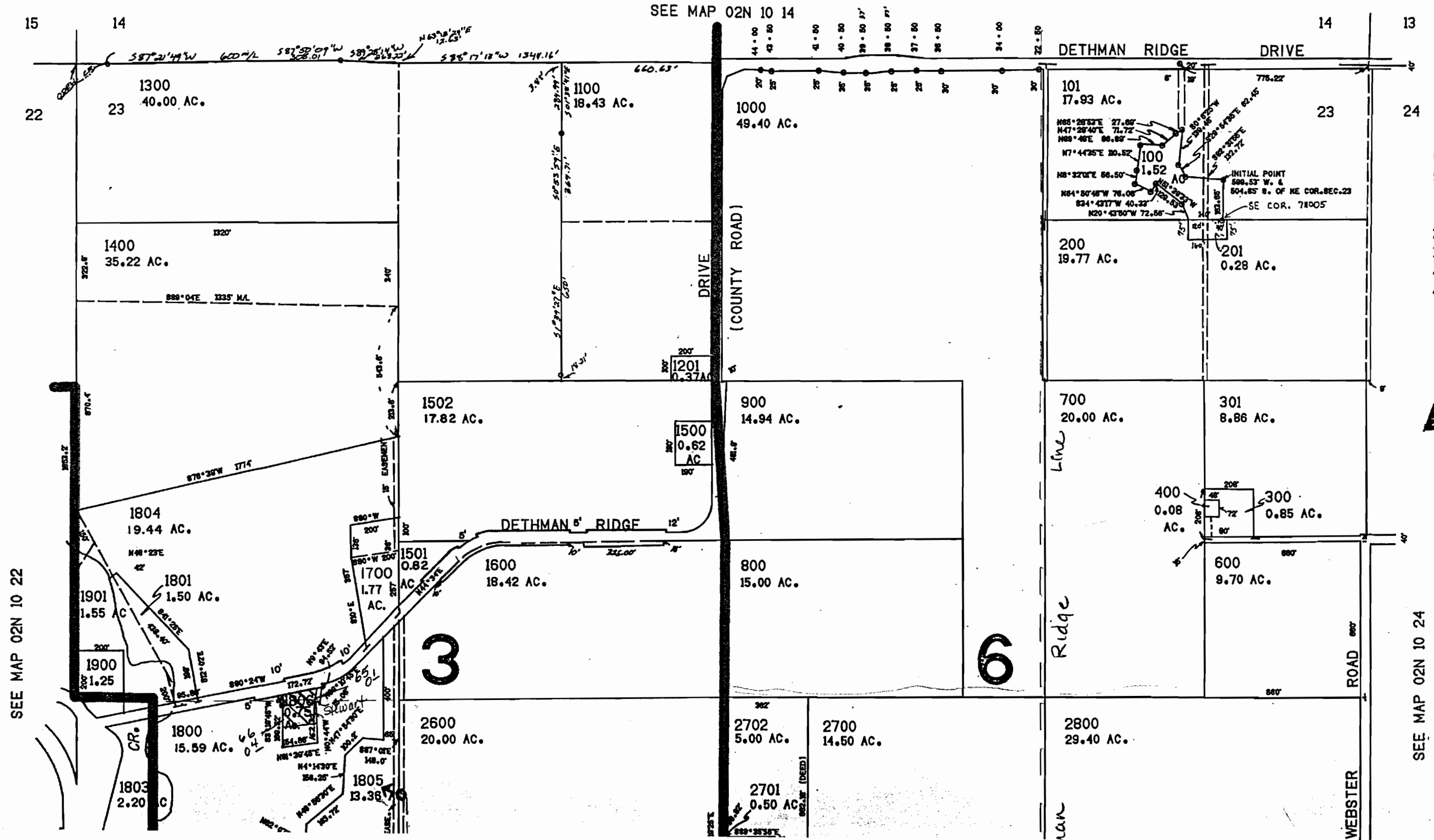
SECTION 23 T.02N .R.10E. W.M. HOOD RIVER COUNTY

1" = 400'

Application No. 41228
Permit No. 30825
Certificate No. 80928
Map 6 of 18

WATER RESOURCES DEPT.
SALEM, OREGON

02



CANC
500
1200
1802
200C
3701
400C
4100

SEE MAP 02N 10 24

SEE MAP 02N 10 22

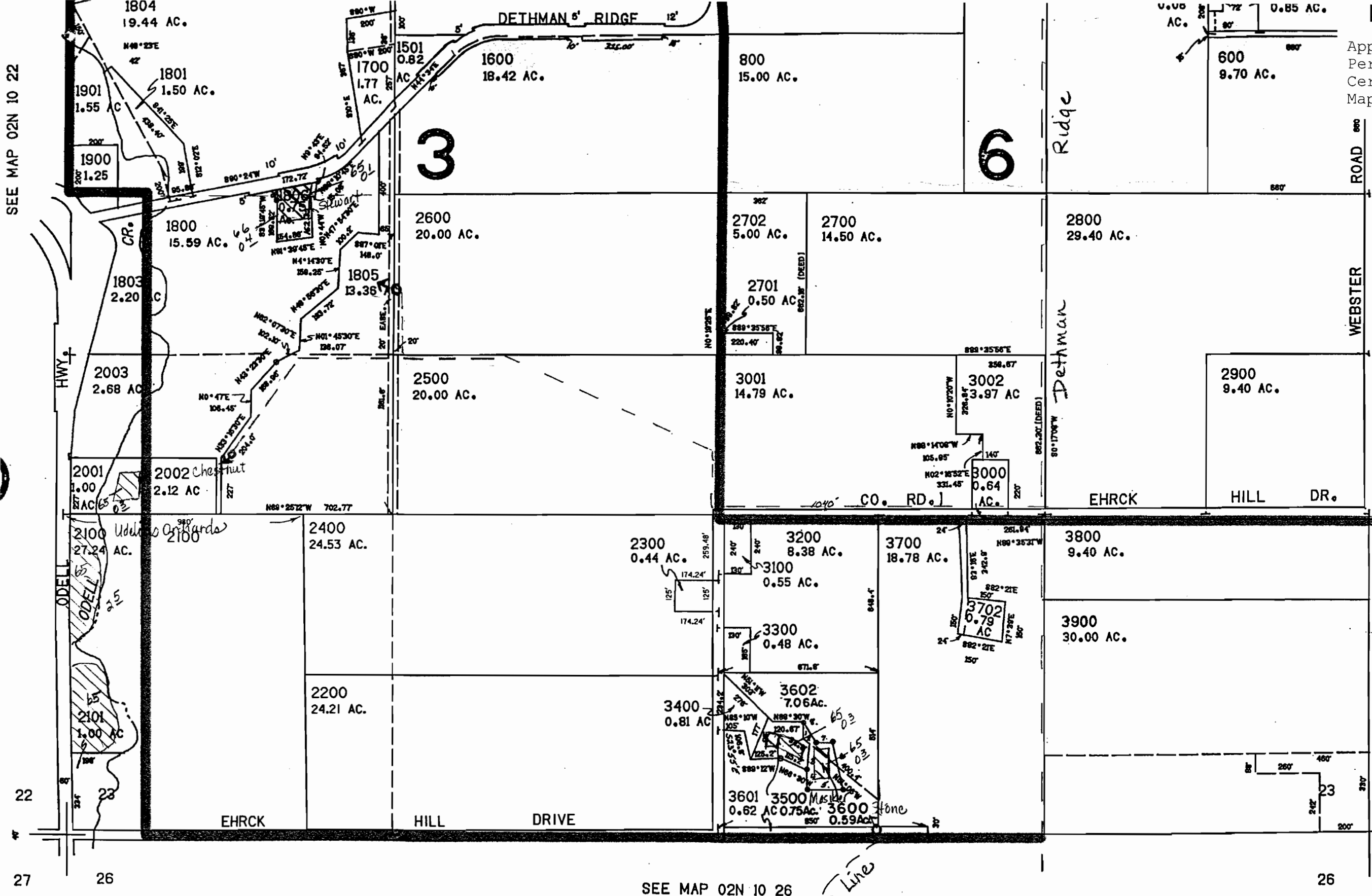
SEE MAP 02N 10 14

SEE MAP 02N 10 22

Application No. 41228
Permit No. 30825
Certificate No. 80928
Map 7 of 18

SEE MAP 02N 10 2

RECEIVED
JUN 03 2002
WATER RESOURCES DEPT.
SALEM, OREGON



Map Legend	
Map Symbols	
	Turnout Box
	Open Ditch
	Pipeline
	Property Line
Water Right Certificate	
	P - 26517
	P - 30825
	P - 32101
	P - 32685
East Fork Irigation District Hood River, Oregon	
Section 2N-10-23	
Scale 1" = 400 cms	

SEE MAP 02N 10 26

Shaw Line

REVISED 5-5-99, CS

02N 10 23

THIS MAP WAS PREPARED FOR ASSESSMENT PURPOSE ONLY

SECTION 24, T.2N. R.10E. W.M. HOOD RIVER COUNTY

1" = 400'

Application No. 41228
Permit No. 30825
Certificate No. 80928
Map 8 of 18

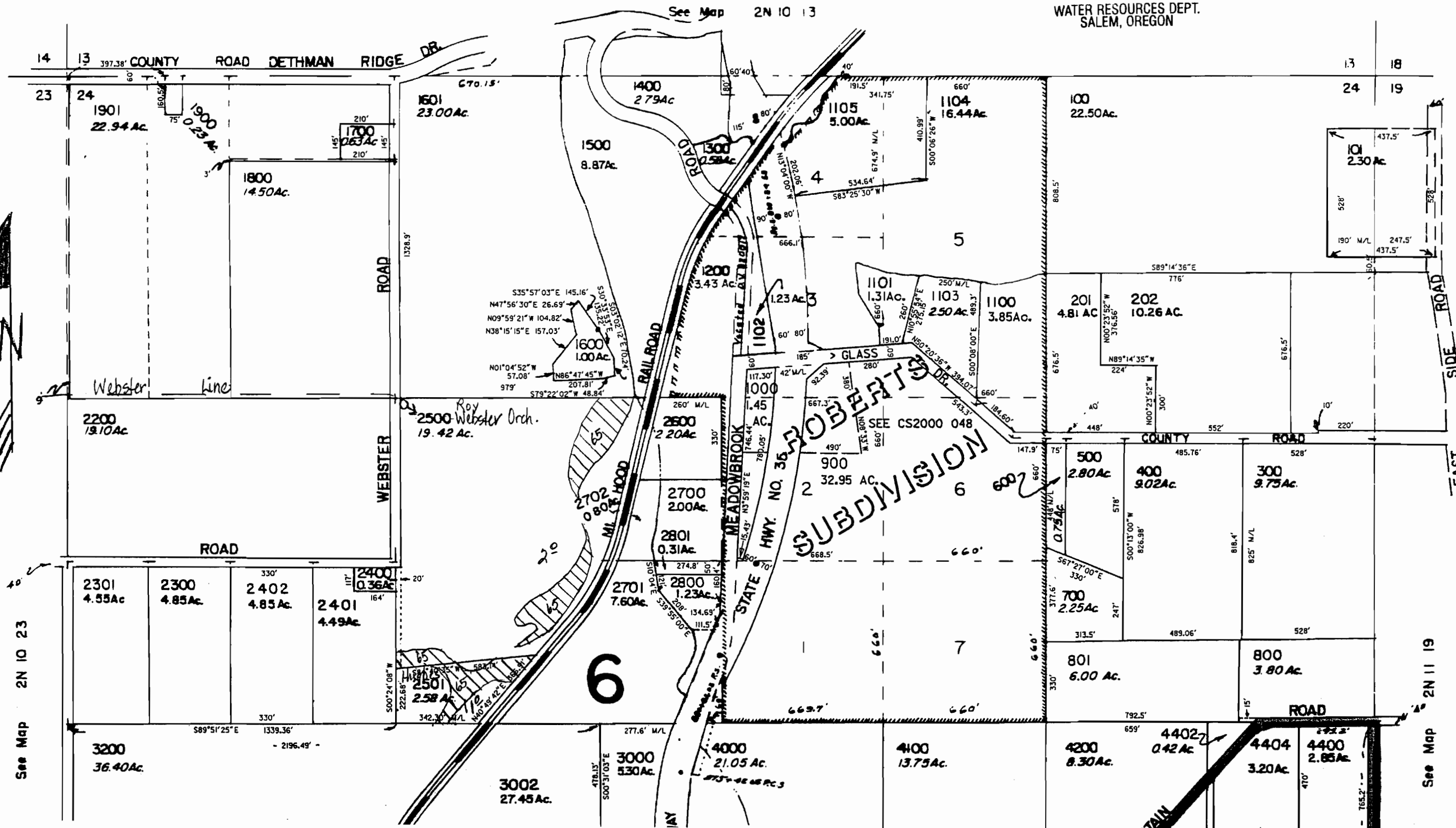
2N

2100
3502
2790
2900
200
2890

RECEIVED

JUN 03 2002

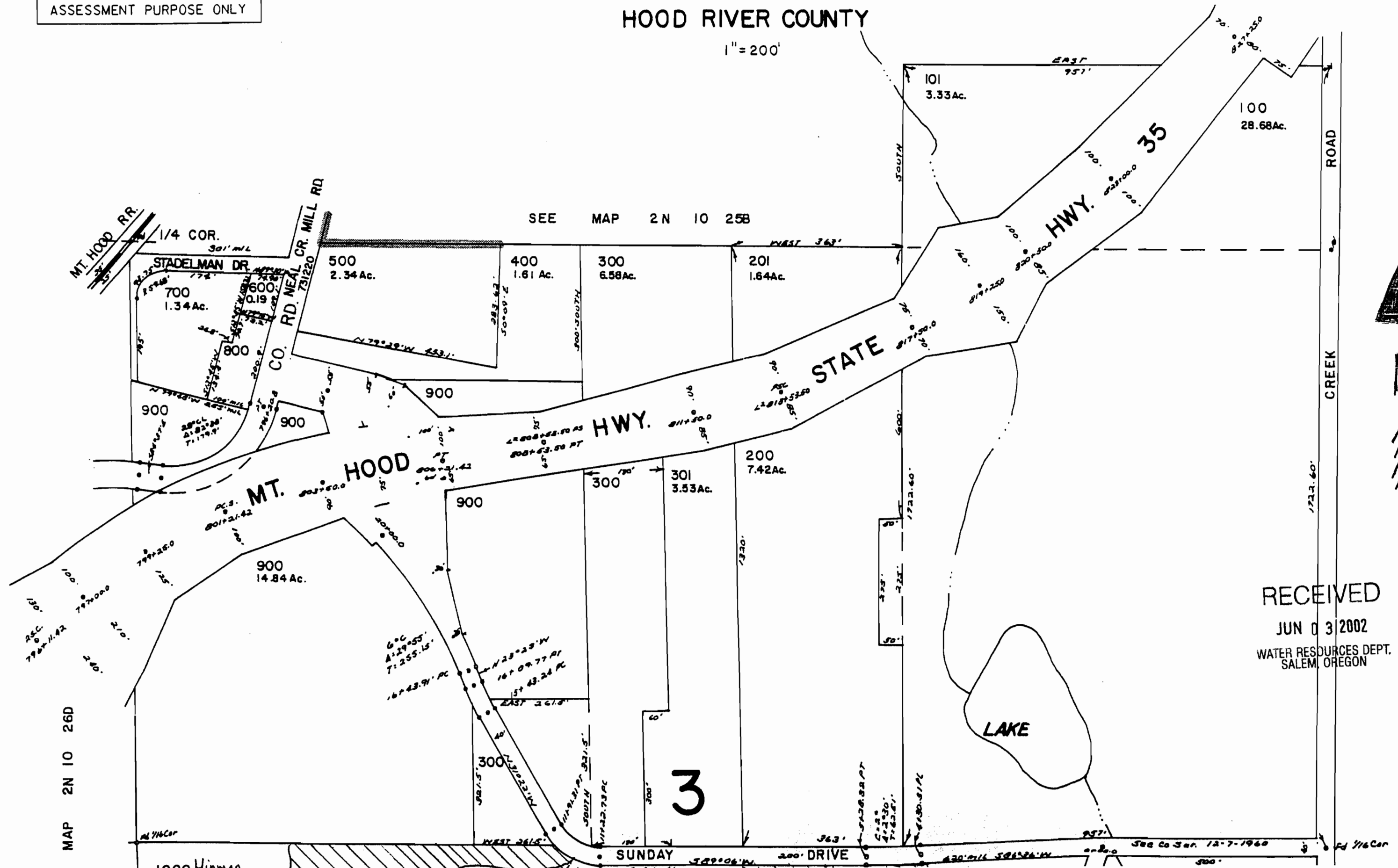
WATER RESOURCES DEPT.
SALEM, OREGON



THIS MAP WAS PREPARED FOR
ASSESSMENT PURPOSE ONLY

SW 1/4 SEC. 25 T.2N. R.10E. W.M.
HOOD RIVER COUNTY

1" = 200'



SEE MAP 2N 10 25B

RECEIVED
JUN 03 2002
WATER RESOURCES DEPT.
SALEM, OREGON

MAP 2N 10 26D

3

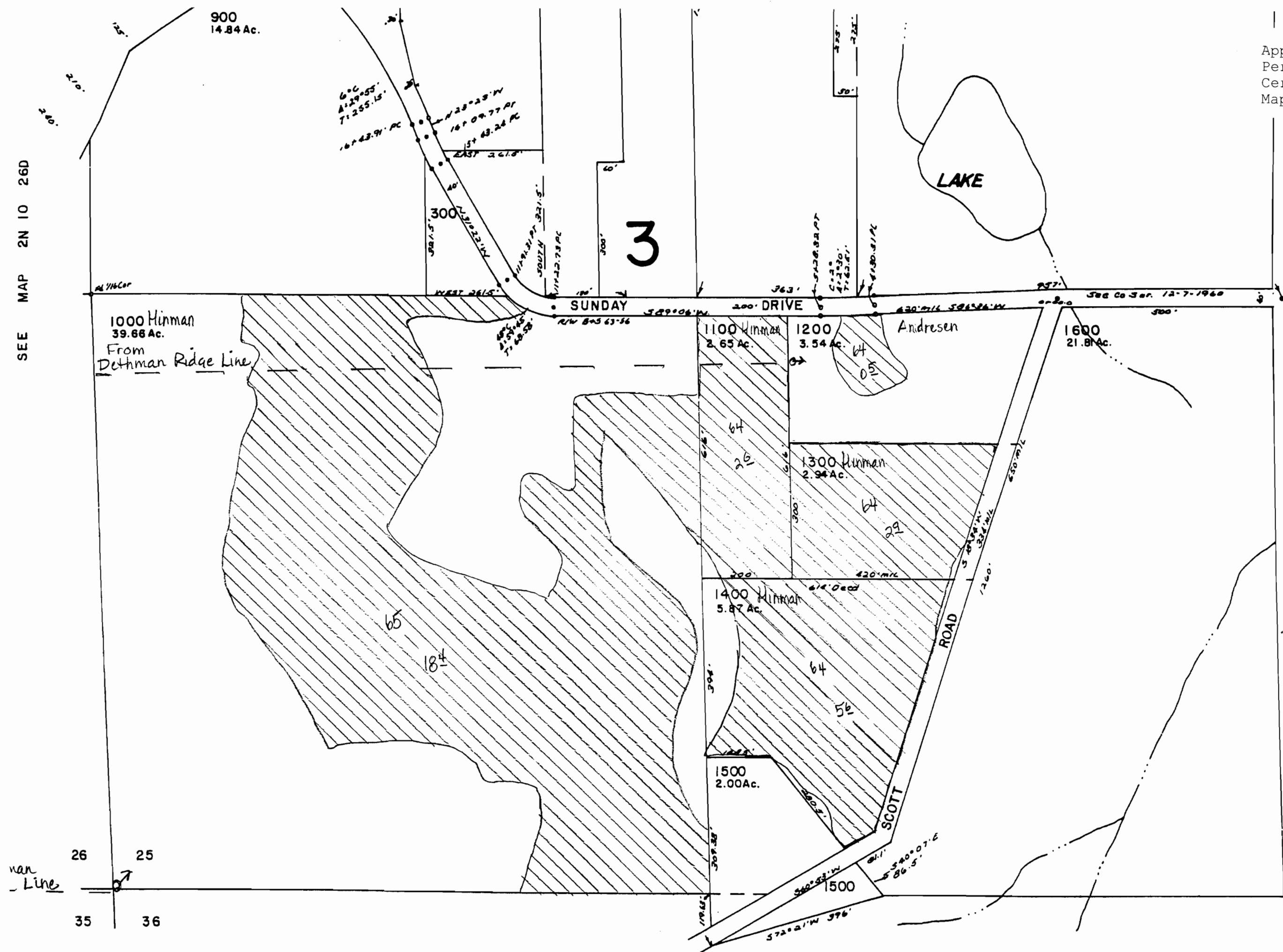
1000 Hinman
SUNDAY DRIVE
588 Co. 3rd. 12-7-1960
1/16 Cor

Application No. 41228
 Permit No. 30825
 Certificate No. 80928
 Map 11 of 18

SEE MAP 2N 10 26D

SEE MAP 2N 10

RECEIVED
 JUN 03 2002
 WATER RESOURCES DEPT.
 SALEM, OREGON



Map Legend	
Map Symbols	
	Turnout Box
	Open Ditch
	Pipeline
	Property Line
Water Right Certificate	
	P - 26517
	P - 30825
	P - 32101
	P - 32685
East Fork Irrigation District Hood River, Oregon	
Section 2N-10-25C	
Scale 1" = 200 cms	

26 25
 35 36

SEE MAP 2N 10 36

2N 10 25C

PREPARED FOR
THIS PURPOSE ONLY

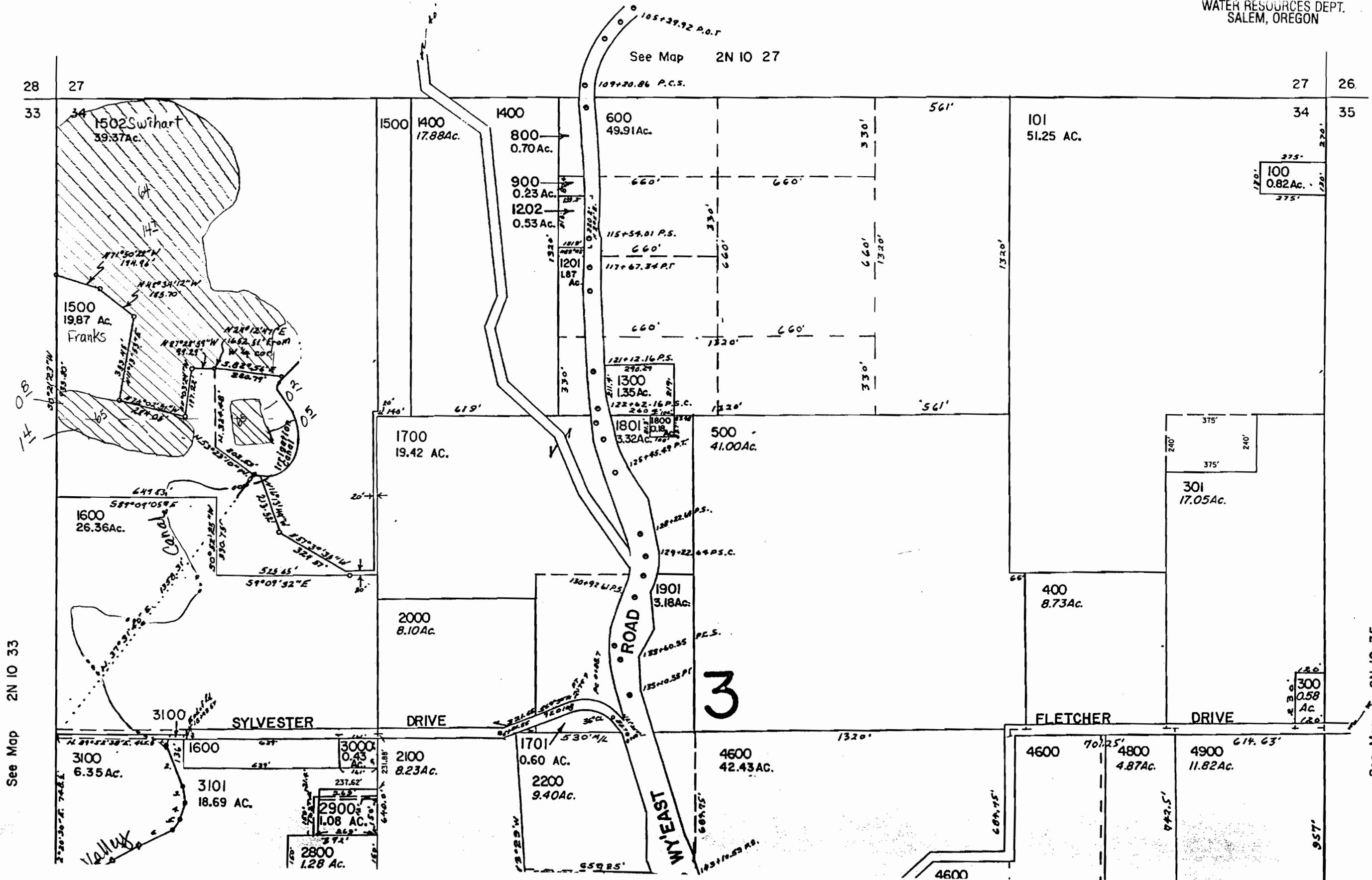
Section 34 T2N R10E WM
Hood River County
1"=400'

Application No. 41228
Permit No. 30825
Certificate No. 80928
Map 13 of 18

10

JUN 03 2002

WATER RESOURCES DEPT.
SALEM, OREGON



- CANCELLED
- 2901
 - 3102
 - 3601
 - 3002
 - 3003
 - 1000
 - 3001
 - 1501
 - 2300
 - 1900
 - 700
 - 1100
 - 1200
 - 200

T. L. 3100
5°20'00" W, 48.5'
0°44'15" E, 177.5'
5°35'45" E, 71.8'
0°25'45" W, 67.8'
0°07'00" N, 51.2'
3°47'45" N, 150.2'
8°14'36" N, 150.1'
0°15'00" N, 138.2'
0°23'00" N, 71'
1°07'36" N, 90'
3°27'00" N, 34'

See Map 2N 10 33

See Map 2N 10 35



Application No. 41228
 Permit No. 30825
 Certificate No. 80928
 Map 14 of 18


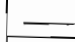
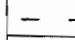

RECEIVED

JUN 03 2002

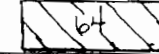
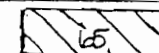
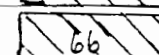

WATER RESOURCES DEPT.
 SALEM, OREGON

Map Legend

Map Symbols

-  Turnout Box
-  Open Ditch
-  Pipeline
-  Property Line

Water Right Certificate

-  P - 26517
-  P - 30825
-  P - 32101
-  P - 32685

East Fork Irrigation District
 Hood River, Oregon

Section 2N-10-34

Scale 1" = 400 cms

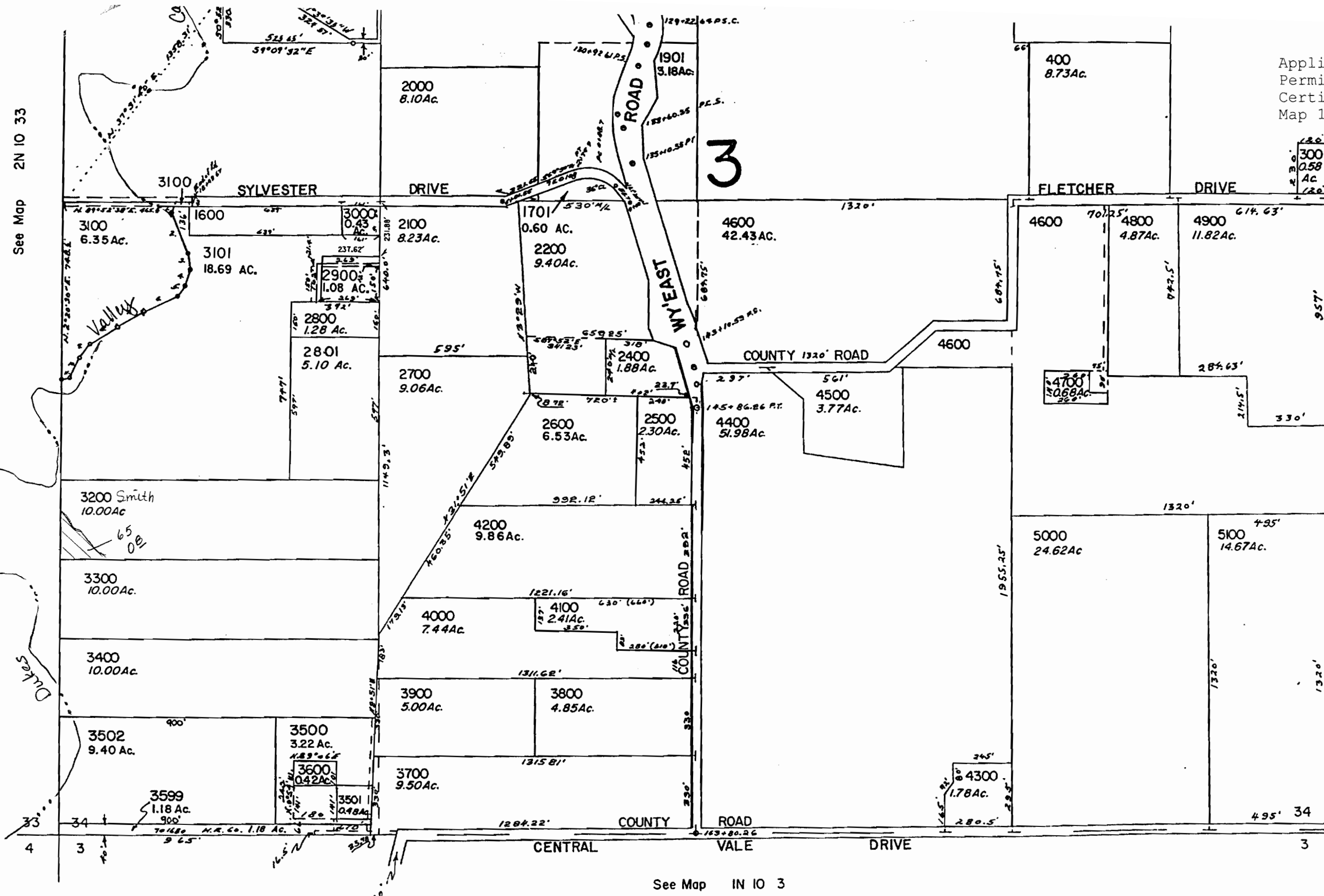
See Map 2N 10 33

See Map 2N

See Map IN 10 3

2N 10 34

REVISED 3-2-99, JD



THIS MAP WAS PREPARED FOR ASSESSMENT PURPOSE ONLY

SECTION 35 T2N R10E WM HOOD RIVER COUNTY

1" = 400'

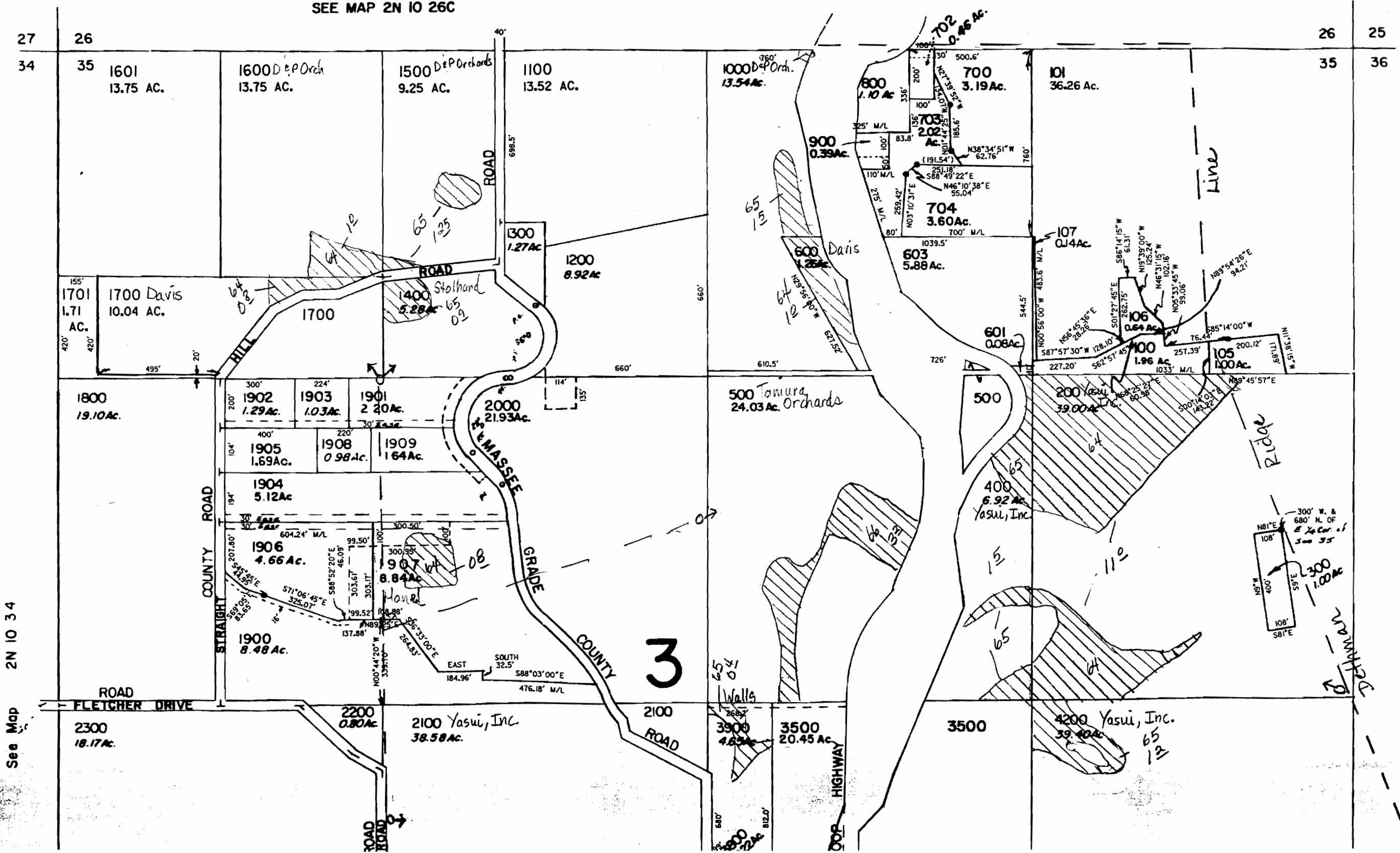
Application No. 41228
Permit No. 30825
Certificate No. 80928
Map 15 of 18

JUN 03 2002

WATER RESOURCES DEPT.
SALEM, OREGON

SEE MAP 2N 10 26C

SEE MAP 2N 10 26D



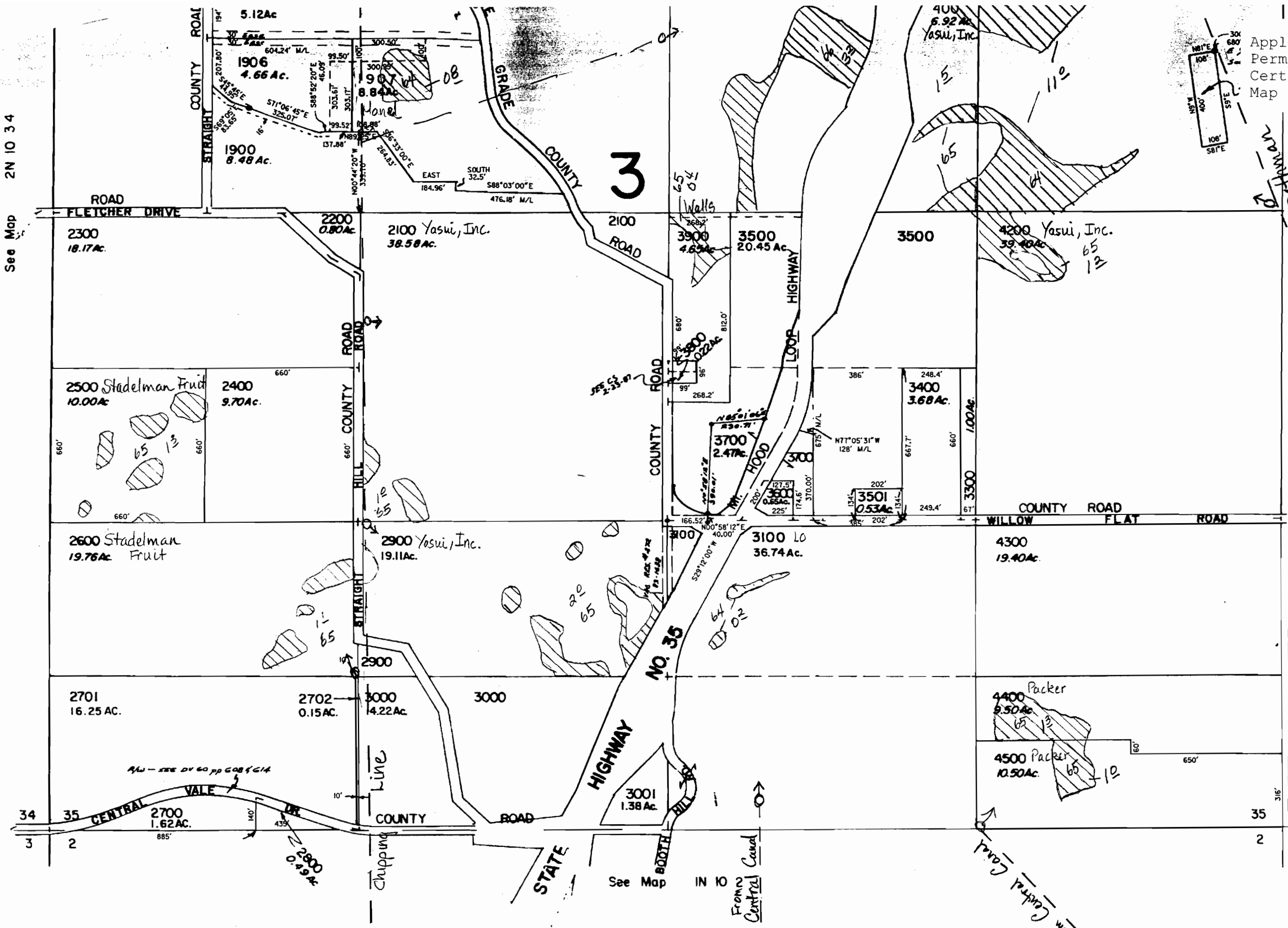
See Map 2N 10 34

See Map 2N 10 36

Application No. 41228
 Permit No. 30825
 Certificate No. 80928
 Map 16 of 18

RECEIVED
 JUN 3 2002
 WATER RESOURCES DEPT.
 SALEM, OREGON

Map Legend	
Map Symbols	
	Turnout Box
	Open Ditch
	Pipeline
	Property Line
Water Right Certificate	
	P - 26517
	P - 30825
	P - 32101
	P - 32685
East Fork Irrigation District Hood River, Oregon	
Section 2N-10-35	
Scale 1" = 400 cms	



See Map 2N 10 34

See Map 2N 10 31

REVISED 5-10-99, JD

2N 10 35

Application No. 41228
Permit No. 30825
Certificate No. 80928
Map 17 of 18

3N

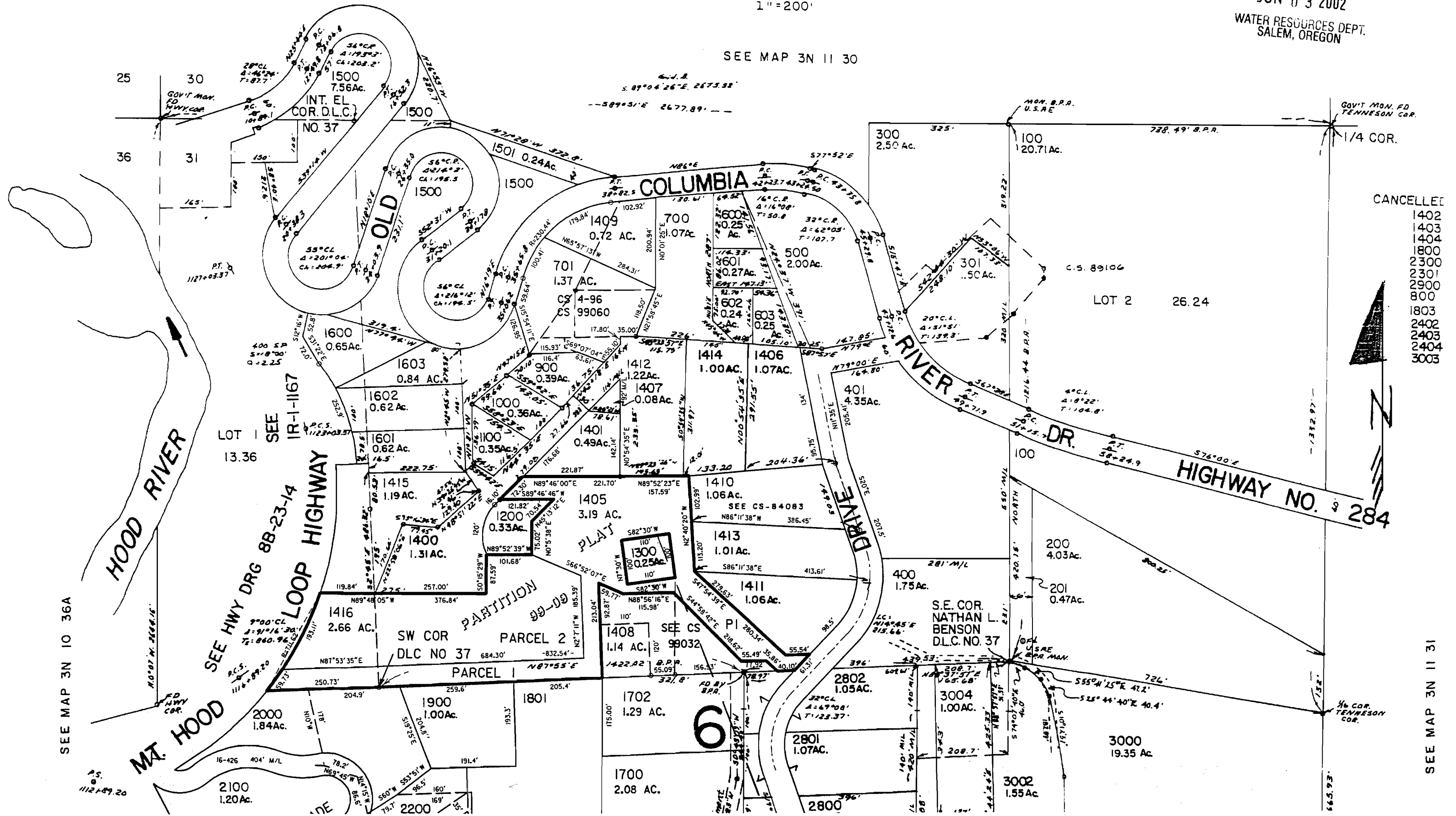
THIS MAP WAS PREPARED FOR
ASSESSMENT PURPOSE ONLY

NW1/4 SEC. 31 T.3N. R.11E. W.M.
HOOD RIVER COUNTY

1" = 200'

SEE MAP 3N 11 30

RECEIVED
JUN 03 2002
WATER RESOURCES DEPT.
SALEM, OREGON



- CANCELLED
- 1402
 - 1403
 - 1404
 - 1800
 - 2300
 - 2301
 - 2900
 - 800
 - 1803
 - 2402
 - 2403
 - 2404
 - 3003

SEE MAP 3N 10 36A

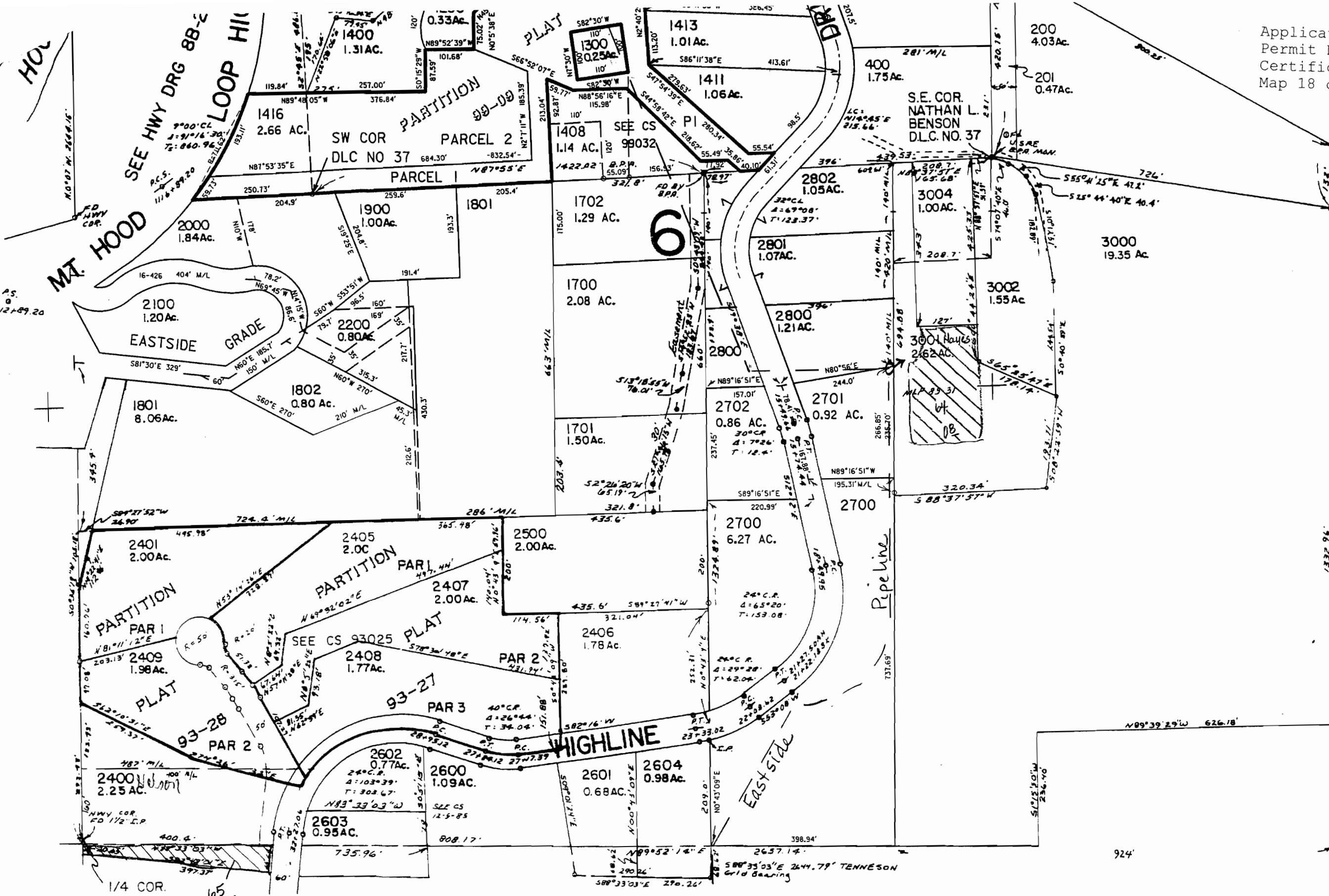
SEE MAP 3N 11 31

SEE MAP 3N 10 36A

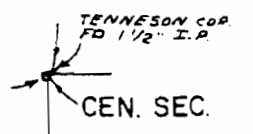
Application No. 41228
Permit No. 30825
Certificate No. 80928
Map 18 of 18

D
DEPT.
JALCIN, OREGON

SEE MAP 3N 11 31



Map Legend	
Map Symbols	
	Turnout Box
	Open Ditch
	Pipeline
	Property Line
Water Right Certificate	
	P - 26517
	P - 30825
	P - 32101
	P - 32685
East Fork Irrigation District Hood River, Oregon	
Section 3N-11-31B	
Scale 1" = 200 cms	



Revised
8/2/01, JD
3N 11 31B

SEE MAP 3N 11 31C

144,000

146,000