

FINAL PROOF SURVEY MAP

prepared for

YACHATS VALLEY LANDOWNERS ASSOCIATION

under
PERMIT No.53704
 showing the location of
Points of Diversion and Claims of Beneficial Uses
 in
TOWNSHIP 14 SOUTH, RANGE 11 WEST - W.M.
 and
TOWNSHIP 15 SOUTH, RANGE 11 WEST - W.M.
 -All sources are tributaries to the Yachats River-

JANUARY 2003

P.O.D. COORDINATES

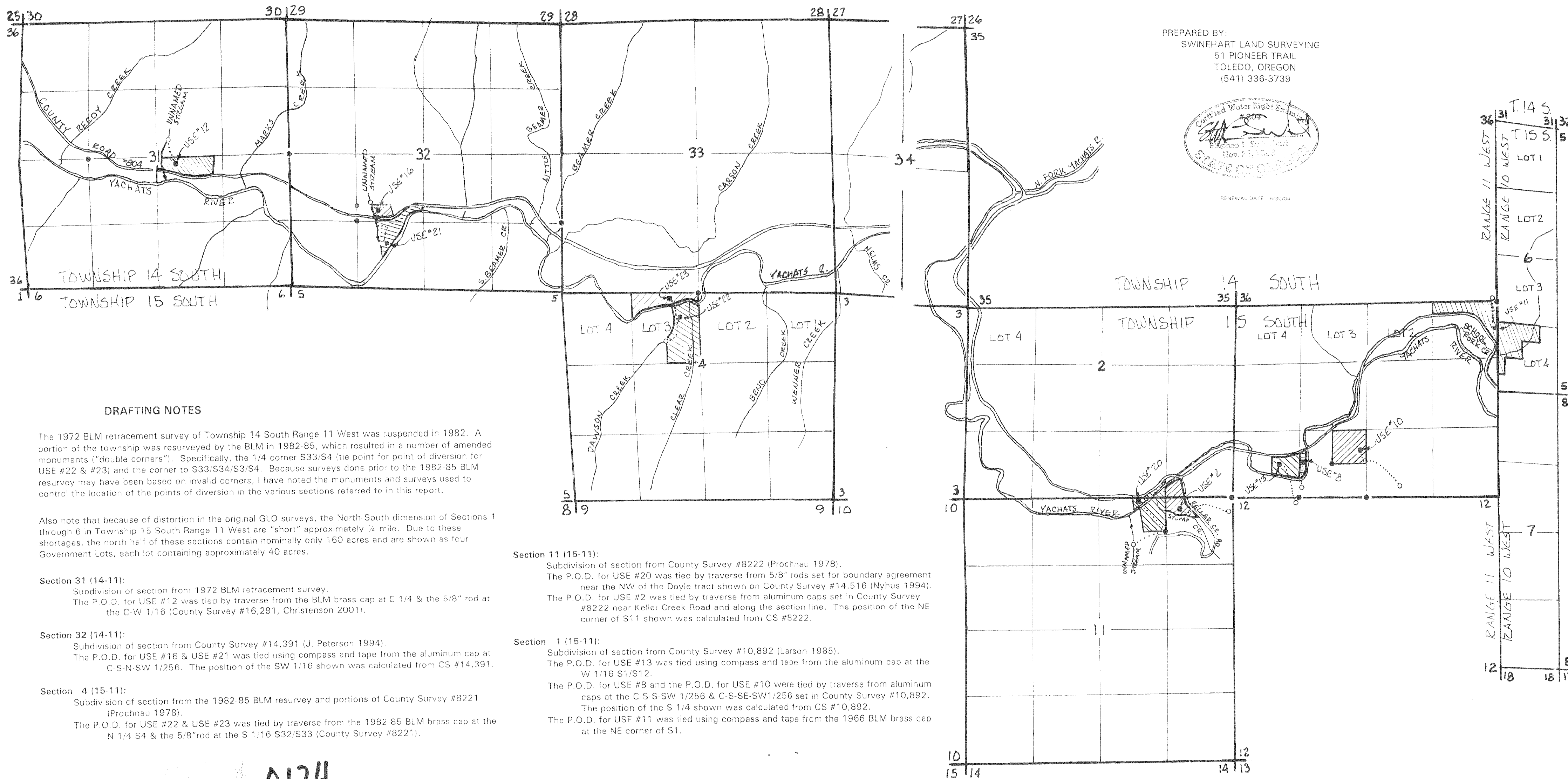
USE #12	346' N / 205' E of C1/4 S31 (14-11)
USE #16 & #21	351' N / 252' E of SW 1/16 S32 (14-11)
USE #22 & #23	975' S / 600' W of N1/4 S4 (15-11)
USE #20	891' S & 697' E of N1/4 S11 (15-11)
USE #2	276' S & 65' W of NE corner of S11 (15-11)
USE #13	73' S & 40' W of W 1/16 S1/S12 (15-11)
USE #8	210' N & 74' E of W 1/16 S1/S12 (15-11)
USE #10	235' N & 676' E of S1/4 S1 (15-11)
USE #11	54' N & 48' W of SE corner of S36 (14-11)

Jan 27 2003

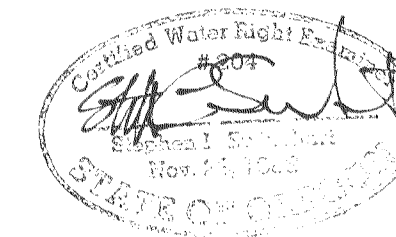
- LEGEND**
- INDICATES POINT OF DIVERSION
 - INDICATES APPROXIMATE LOCATION OF WATER PIPELINE
 - INDICATES MONUMENTED SURVEY CORNER
 - SEE DRAFTING NOTES FOR ADDITIONAL INFORMATION
 - INDICATES APPROXIMATE LOCATION OF EXISTING RESIDENCE
 - == INDICATES COUNTY ROAD #804 (YACHATS RIVER ROAD)



THIS MAP PREPARED FOR THE PURPOSE OF IDENTIFYING THE LOCATION OF A WATER RIGHT ONLY, AND IS NOT INTENDED TO PROVIDE ACCURATE DIMENSIONS OR LOCATIONS OF ACTUAL PROPERTY OWNERSHIP LINES.



PREPARED BY:
 SWINEHART LAND SURVEYING
 51 PIONEER TRAIL
 TOLEDO, OREGON
 (541) 336-3739



RENEWAL DATE: 6/30/04

DRAFTING NOTES

The 1972 BLM retracement survey of Township 14 South Range 11 West was suspended in 1982. A portion of the township was resurveyed by the BLM in 1982-85, which resulted in a number of amended monuments ("double corners"). Specifically, the 1/4 corner S33/S4 (tie point for point of diversion for USE #22 & #23) and the corner to S33/S34/S3/S4. Because surveys done prior to the 1982-85 BLM resurvey may have been based on invalid corners, I have noted the monuments and surveys used to control the location of the points of diversion in the various sections referred to in this report.

Also note that because of distortion in the original GLO surveys, the North-South dimension of Sections 1 through 6 in Township 15 South Range 11 West are "short" approximately 1/4 mile. Due to these shortages, the north half of these sections contain nominally only 160 acres and are shown as four Government Lots, each lot containing approximately 40 acres.

Section 31 (14-11):
 Subdivision of section from 1972 BLM retracement survey.
 The P.O.D. for USE #12 was tied by traverse from the BLM brass cap at E 1/4 & the 5/8" rod at the C-W 1/16 (County Survey #16,291, Christenson 2001).

Section 32 (14-11):
 Subdivision of section from County Survey #14,391 (J. Peterson 1994).
 The P.O.D. for USE #16 & USE #21 was tied using compass and tape from the aluminum cap at C-S-N-SW 1/256. The position of the SW 1/16 shown was calculated from CS #14,391.

Section 4 (15-11):
 Subdivision of section from the 1982-85 BLM resurvey and portions of County Survey #8221 (Prochnau 1978).
 The P.O.D. for USE #22 & USE #23 was tied by traverse from the 1982 85 BLM brass cap at the N 1/4 S4 & the 5/8" rod at the S 1/16 S32/S33 (County Survey #8221).

Section 11 (15-11):
 Subdivision of section from County Survey #8222 (Prochnau 1978).
 The P.O.D. for USE #20 was tied by traverse from 5/8" rods set for boundary agreement near the NW of the Doyle tract shown on County Survey #14,516 (Nyhus 1994).
 The P.O.D. for USE #2 was tied by traverse from aluminum caps set in County Survey #8222 near Keller Creek Road and along the section line. The position of the NE corner of S11 shown was calculated from CS #8222.

Section 1 (15-11):
 Subdivision of section from County Survey #10,892 (Larson 1985).
 The P.O.D. for USE #13 was tied using compass and tape from the aluminum cap at the W 1/16 S1/S12.
 The P.O.D. for USE #8 and the P.O.D. for USE #10 were tied by traverse from aluminum caps at the C-S-S-SW 1/256 & C-S-SE-SW1/256 set in County Survey #10,892. The position of the S 1/4 shown was calculated from CS #10,892.
 The P.O.D. for USE #11 was tied using compass and tape from the 1966 BLM brass cap at the NE corner of S1.

0134