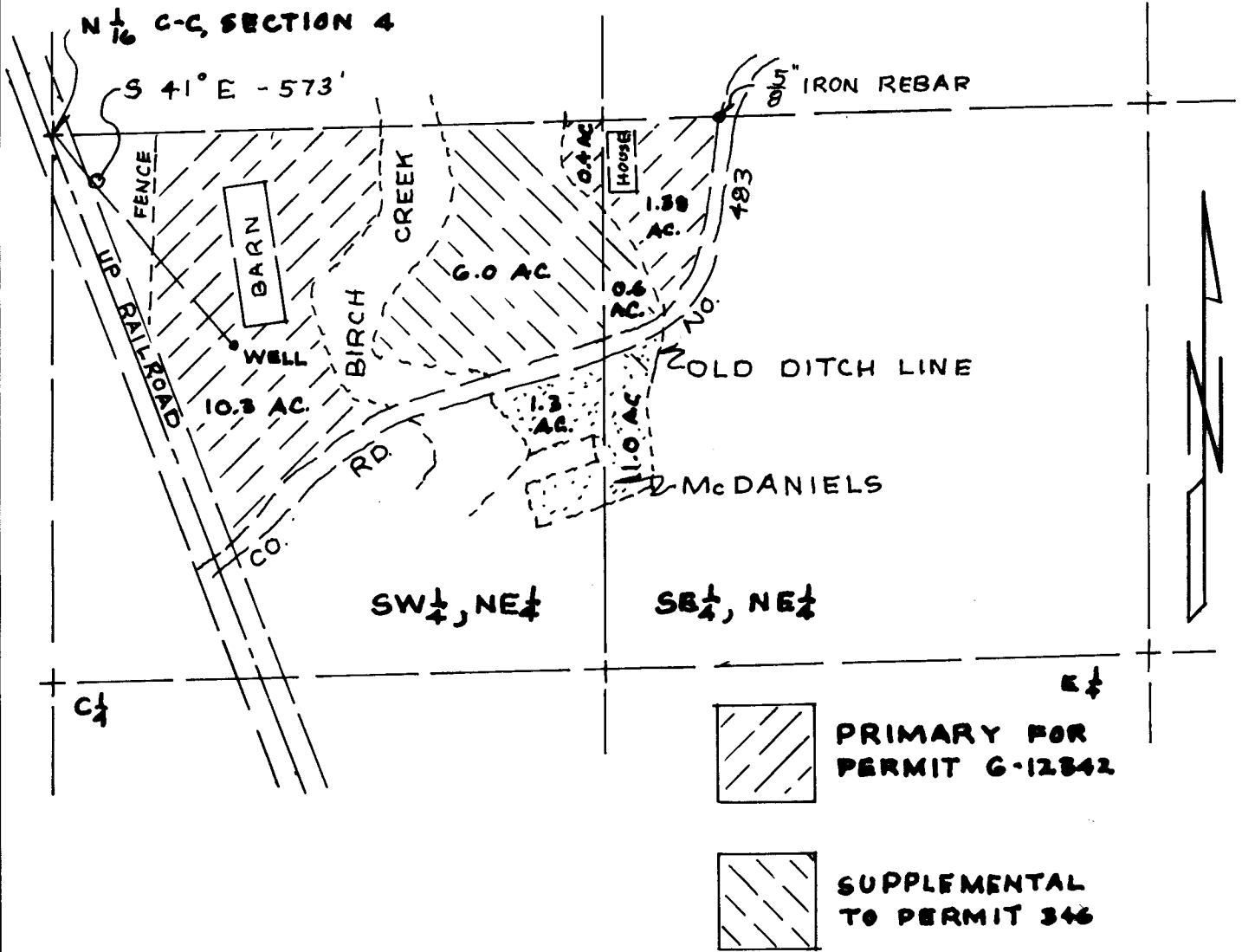
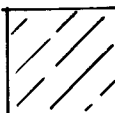



S 1/2, NE 1/4, SECTION 4



 PRIMARY FOR PERMIT G-12342

 SUPPLEMENTAL TO PERMIT 346

KRUMBEIN ENGINEERING LTD.
 ENGINEERS - SURVEYORS - PLANNERS
 361 S.E. Second Pendleton, Oregon

Scale 1" = 100'	Drn. By DHK	Drng. No. 0333A	Revision 1 10-20-04
Date 9-10-03	Ckd. By	Job No. 9113	Revision 2

FINAL PROOF MAP AND CLAIM OF BENEFICIAL USE
WHEELER
 S 1/2, NE 1/4, SECTION 4
 T. 1 N., R. 32 E.W.M.
 UMATILLA COUNTY, OR.



PERMIT G-12342
APPLICATION
 G-12400
RECEIVED
 OCT 27 2004
 WATER RESOURCES DEPT.
 SALEM, OREGON

RENEWS 6/30/05