

13-8

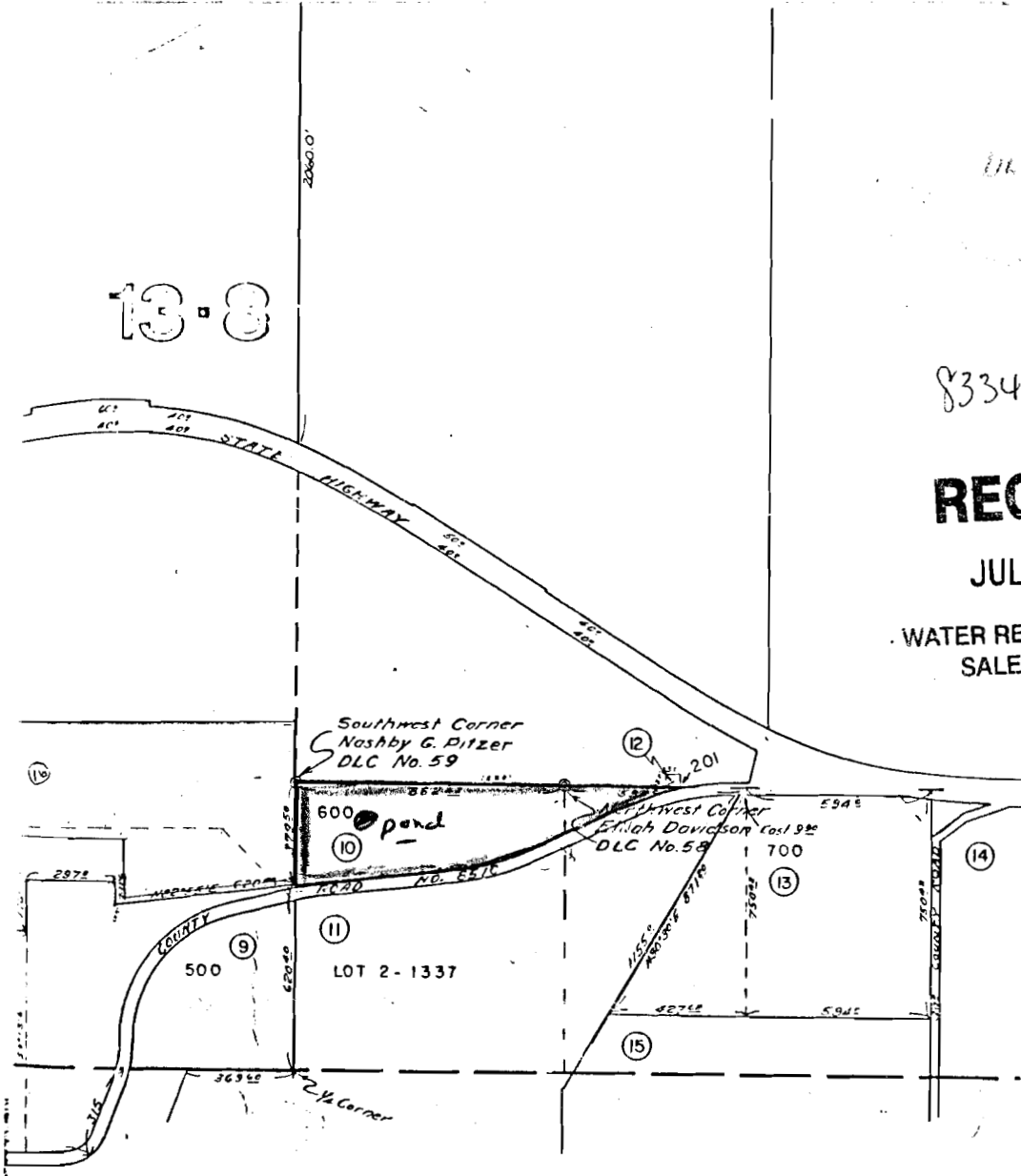
1944
1944

83345

RECEIVED

JUL 22 1996

WATER RESOURCES DEPT.
SALEM, OREGON



SEE MAP NQ 3485

DATE REC'D RECEIVED DATE REC'D RECEIVED

85 5W SEC 27

POLK COUNTY

SCALE 1" = 400'

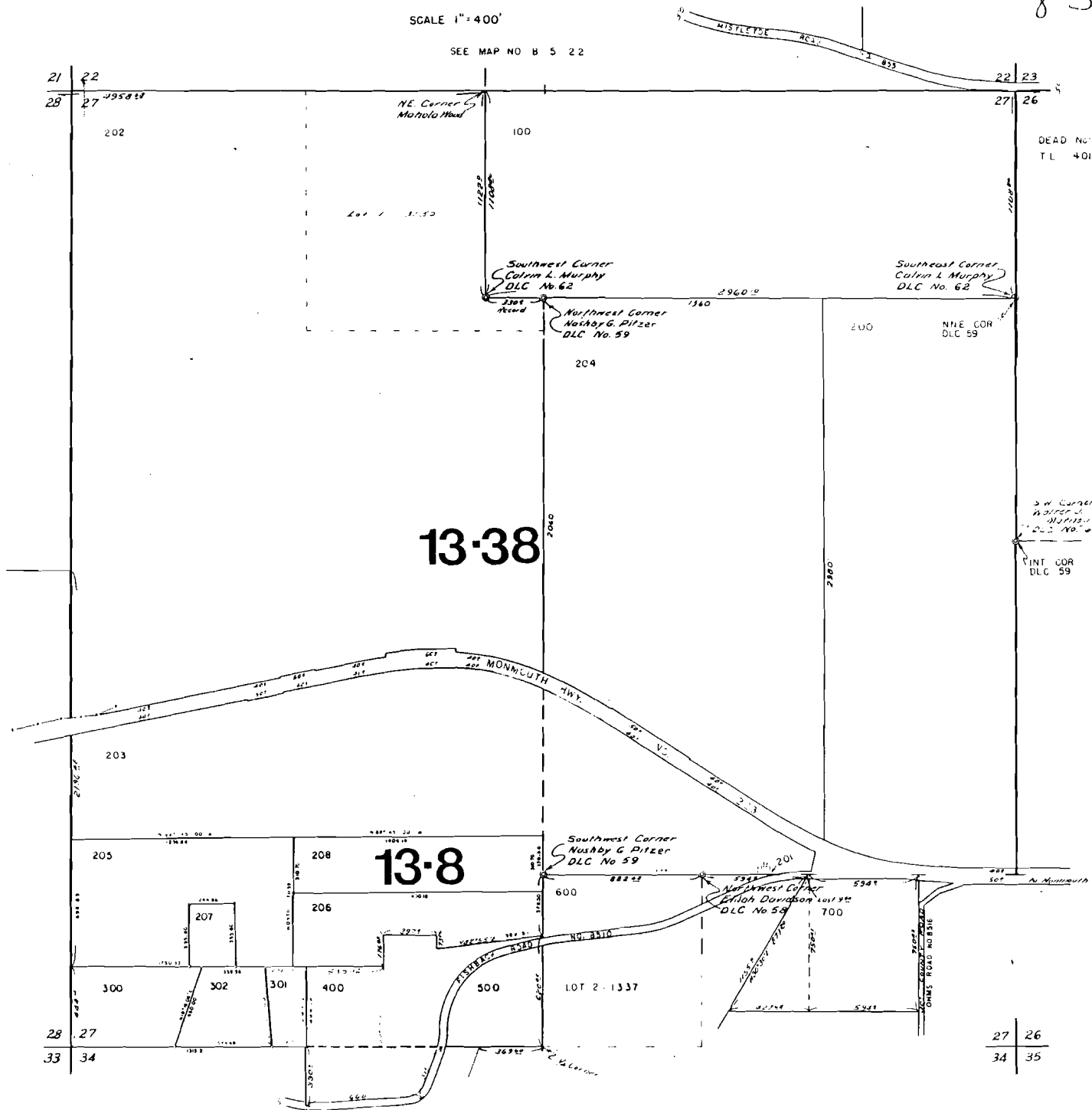
SEE MAP NO B 5 22

8527

0096:1 37705



SEE MAP NO B 5 28



DEAD No's
TL 401

SW Corner
North of
DLC No. 59
SEE MAP NO B 5 26

13-38

13-8

83345

WATER RESOURCES DEPT.
SALEM, OREGON

RECEIVED

JUL 22 1996