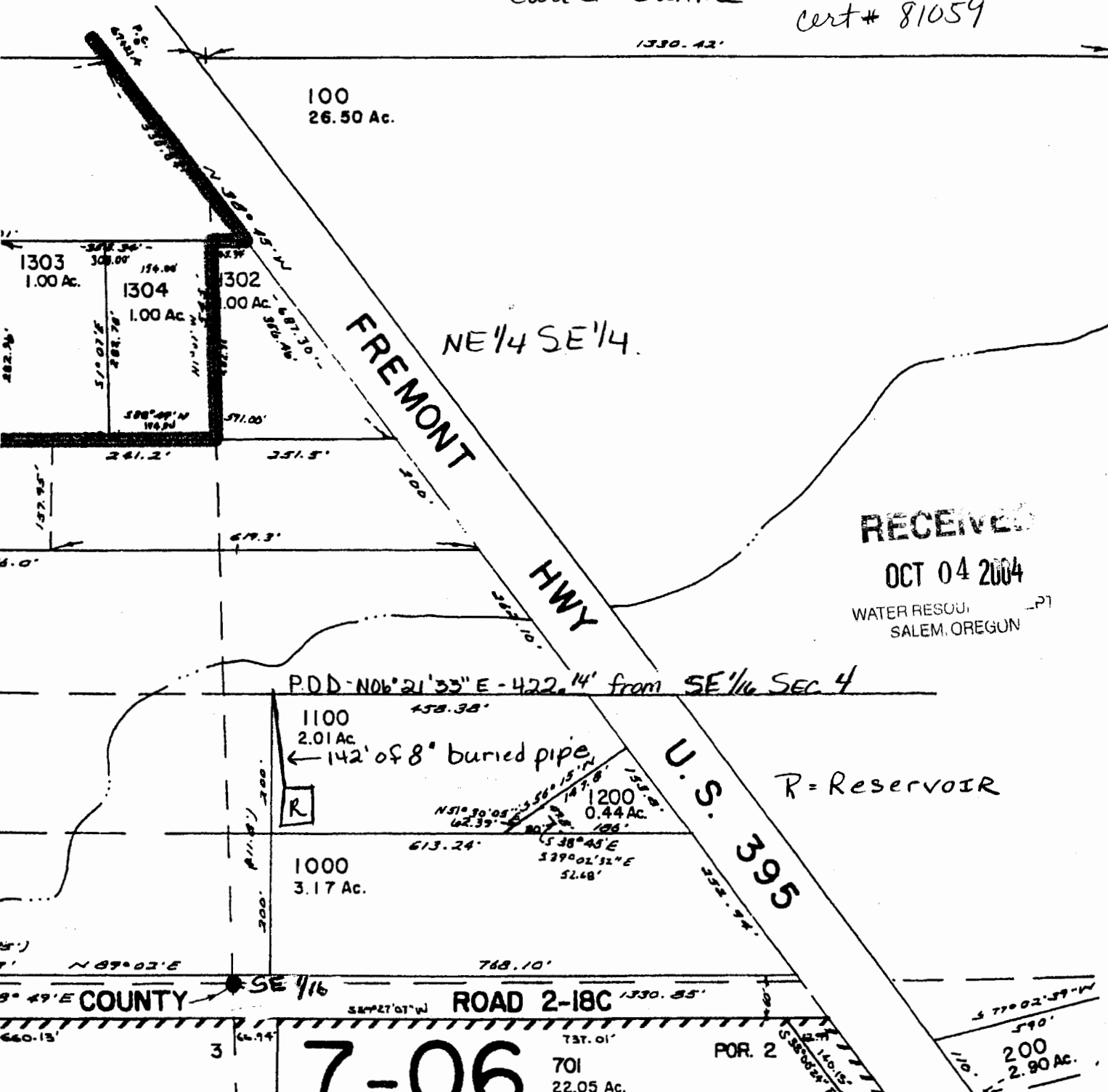


SE1/4 SEC. 4 T.39S. R.20E. W.M.
LAKE COUNTY

1" = 200'

TAX LOT 1100
Application # R-84501
Permit # R-13077
Carl E + Janine L Sundet
Cert # 81059

SEE MAP 39 20 4A



RECEIVED
OCT 04 2004
WATER RESOU. DEPT
SALEM, OREGON

R = Reservoir

7-06

701
22.05 Ac.

POR. 2

200
2.90 Ac.