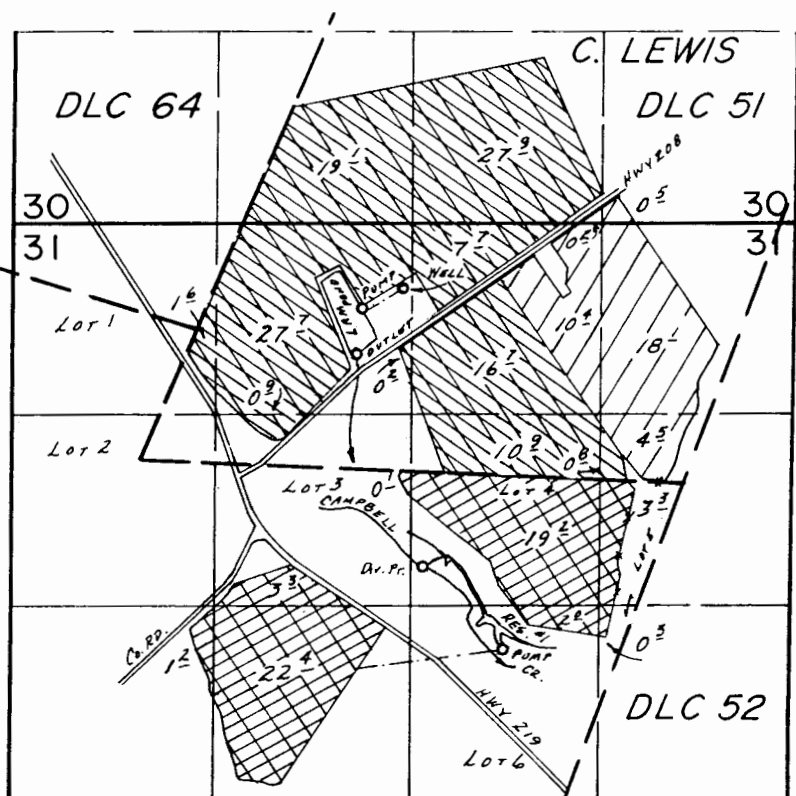


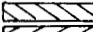
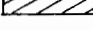
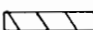
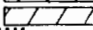

# T. 1S., R. 2W., W.M.



WELL LOC.: 450'S. & 2650'E., DIV. Pts LOC: LRM POND - 900'S & 2340'E,  
RES. #1 - 2370'S & 2790'E, ALL FROM NW COR SEC. 31.

SCALE: 1" = 1320'

## FINAL PROOF SURVEY UNDER

|                        |                   |   |
|------------------------|-------------------|---|
| 55461                  | 43172             |  |
| 55462                  | 43174             |  |
| G-7908                 | G-8144            |  |
| G-7912                 | G-8145            |  |
| Application No. G-9234 | Permit No. G-8585 |  |

IN NAME OF

.....  
 Surveyed July 24, 1986, by B.W. BISHOP.....  
 Feb. 4 1987

2/4/87  
BWB

41067-178-137A